

FOR LEASE > ±30,492 SF



# Industrial Building to Be Built

570 ALASKA AVENUE, TORRANCE, CA 90503

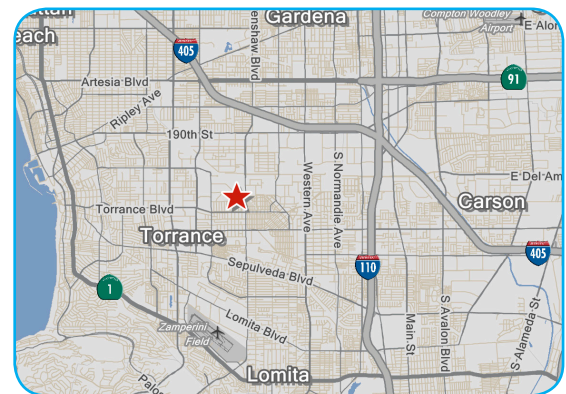


## To Be Built Industrial Warehouse

This approximately 30,492 SF industrial warehouse will be located on a larger approximately 76,593 SF parcel of land.

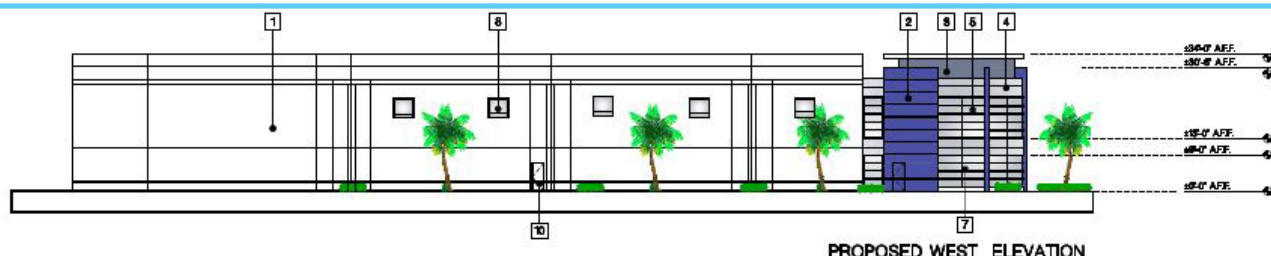
## Building Amenities

- > 30,492 +/- SF Industrial Building
- > 3,338 +/- SF Office Space
- > 1,756 +/- SF Mezzanine
- > Concrete Tilt-up
- > Five (5) 10'x10' Dock High Doors
- > Two (2) Ground Level Doors 12'x14'
- > 28' High Clearance
- > .60/3000 Sprinkler System
- > Fenced & Paved Yard
- > 79 Parking Spaces
- > 800 AMPS/ 270/480 Volts/3 Phase/4 Wire



## Lease Rate

TBD  
5-10 years with Rental Adjustments



CLINT MCMORRIS  
SENIOR VICE PRESIDENT  
LICENSE NO. 00414186  
310 321 1810  
clint.mcmorris@colliers.com

COLLIERS INTERNATIONAL  
2121 Rosecrans Avenue  
Suite 3301  
El Segundo, CA 90245  
www.colliers.com

