

FOR LEASE > OFFICE SPACE

OSWEGO TOWNE SQUARE



9 MONROE PARKWAY LAKE OSWEGO, OR 97035



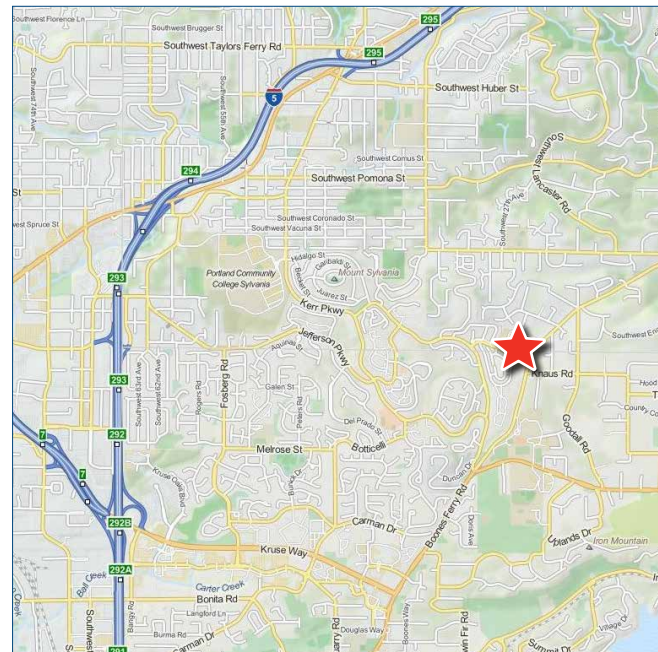
BUILDING SUMMARY

- > 38,230 SF, 3-Story building just off Boones Ferry Road
- > Parking ratio of 3.8/1,000
- > Only 15% load factor
- > Amenities in adjacent retail complex include Starbucks, New Seasons, a daycare center, and various shops.

AVAILABILITIES

- > Suite 100 2,589 - 11,981 SF
- > Suite 290 563 SF

RATE: \$21.95/SF Full Service



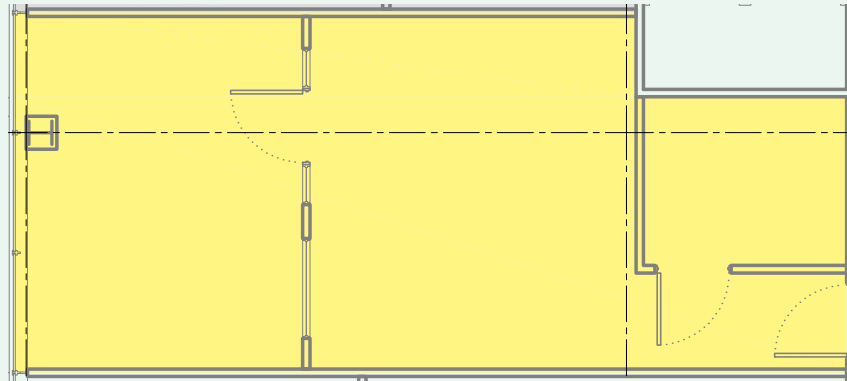
JOHN MEDAK
503 542 5898
Portland, Oregon
daren.duke@colliers.com

COLLIERS INTERNATIONAL
851 SW Sixth Avenue, Suite 1200
Portland, Oregon 97204
www.colliers.com

POSSIBLE DIVISIONS OF SUITE 100



Suite 290
563 RSF



FOR LEASE > OFFICE SPACE

OSWEGO TOWNE SQUARE

9 MONROE PARKWAY LAKE OSWEGO, OR 97035



This document has been prepared by Colliers International for advertising and general information only. Colliers International makes no guarantees, representations or warranties of any kind, expressed or implied, regarding the information including, but not limited to, warranties of content, accuracy and reliability. Any interested party should undertake their own inquiries as to the accuracy of the information. Colliers International excludes unequivocally all inferred or implied terms, conditions and warranties arising out of this document and excludes all liability for loss and damages arising there from. This publication is the copyrighted property of Colliers International and/or its licensor(s). ©2018 All rights reserved. 1/10/18

