

FOR LEASE > FLEX/OFFICE

# 13513 E. Boundary Road

BRANDERMILL TRADE CENTER | MIDLOTHIAN, VIRGINIA 23112



## Property Features

- > 14,800 SF flex/warehouse property
- > 2,200 - 5,000 SF available (50% office/50% warehouse)
- > 12' ceilings in warehouse
- > 3 phase power
- > Conditioned warehouse
- > Two (2) drive-in doors (9' w x 10'h)
- > Ample parking
- > Zoned I-1C
- > Located near intersection of Charter Colony Parkway and Genito Road in Brandermill Trade Center
- > For Lease: **\$8.50/SF, Industrial Gross**



AGENT: MATT HAMILTON  
804 591 2431  
RICHMOND, VA  
[matt.hamilton@colliers.com](mailto:matt.hamilton@colliers.com)

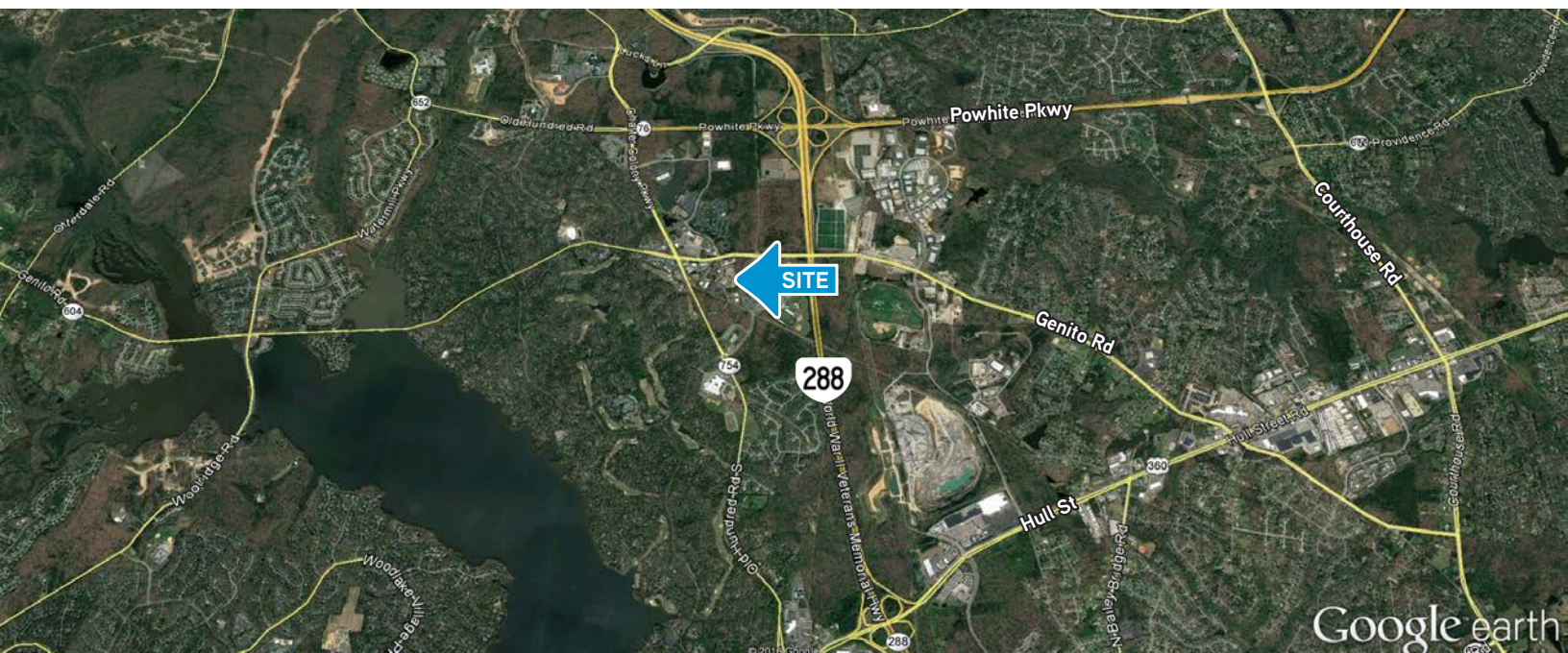
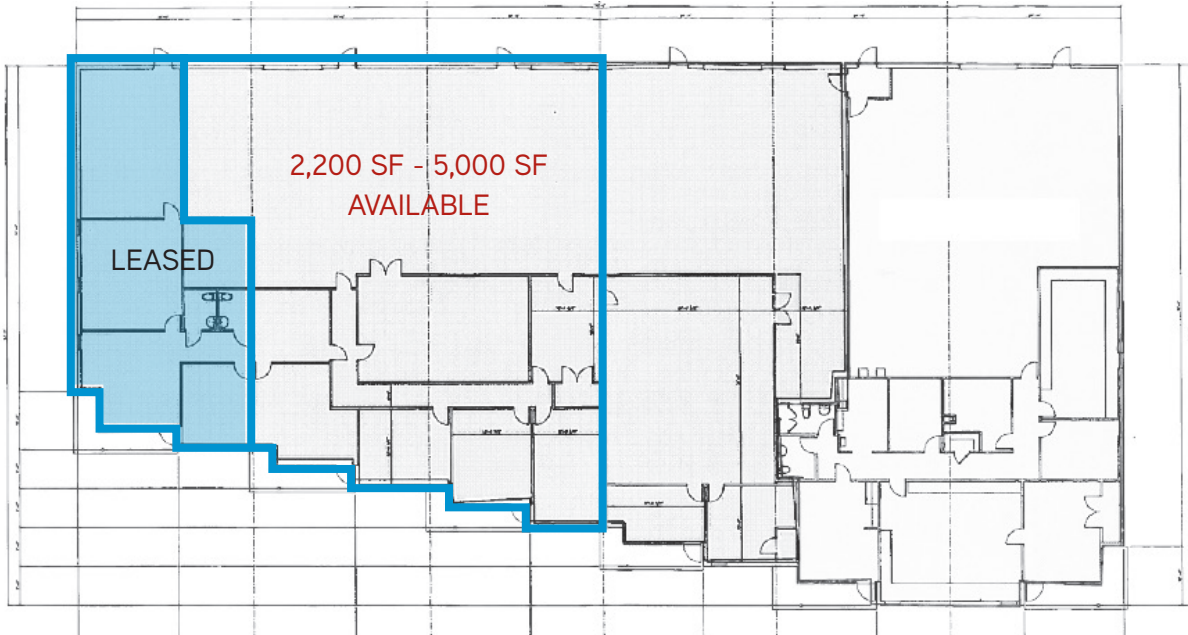
AGENT: ERIC WILLIFORD  
804 591 2410  
RICHMOND, VA  
[eric.williford@colliers.com](mailto:eric.williford@colliers.com)

COLLIERS INTERNATIONAL  
7200 Glen Forest Drive, Suite 200  
Richmond, VA 23226  
[www.colliers.com/richmond](http://www.colliers.com/richmond)

FOR LEASE > FLEX/OFFICE

# 13513 E. Boundary Road

BRANDERMILL TRADE CENTER | MIDLOTHIAN, VIRGINIA 23112



AGENT: MATT HAMILTON  
804 591 2431  
RICHMOND, VA  
matt.hamilton@colliers.com

AGENT: ERIC WILLIFORD  
804 591 2410  
RICHMOND, VA  
eric.williford@colliers.com

COLLIERS INTERNATIONAL  
7200 Glen Forest Drive, Suite 200  
Richmond, VA 23226  
www.colliers.com/richmond