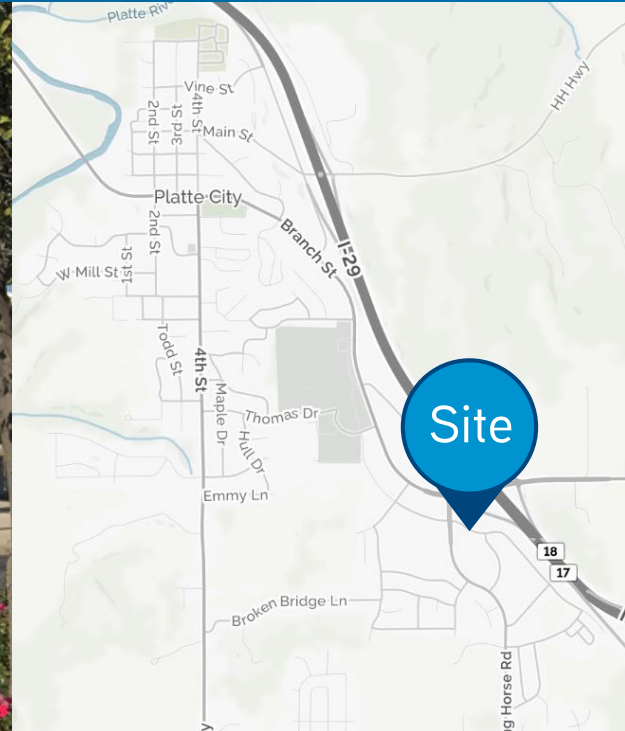


FOR SUBLEASE > OFFICE SPACE



2443 NW Prairie View Road

PLATTE CITY, MO



Property Features

- > Lot size: 1.33 acres
- > Available space: 4,170 SF
- > Sublease rate: \$7,000 / month
- > Visibility from I-29
- > Located off of HWY 92 and Running Horse Road
- > Sublease ending Feb. 28, 2020
- > Freestanding office / former bank branch
- > 2 drive-thru teller lanes

REAGAN O'TOOLE
+1 816 556 1120
KANSAS CITY, MO
reagan.otoole@colliers.com

COLLIERS INTERNATIONAL
4520 Main Street, Suite 1000
Kansas City, MO 64111
www.colliers.com