

ILIKAI

FOR LEASE ILIKAI SHOPS

www.ilikaishops.com



Colliers
INTERNATIONAL



ABOUT THE ILIKAI

Soaring to 30 stories with its stunning glass elevator, the 1009-unit Ilikai is one of Honolulu's iconic properties.

Developed by the legendary Chinn Ho, the Ilikai is well known throughout Hawaii and the world, having been featured prominently in the opening sequences of the original series of "Hawaii Five-0".

The Ilikai Shops offers a legendary address, a convenient location between Ala Moana and Waikiki, and unsurpassed ocean and mauka views.

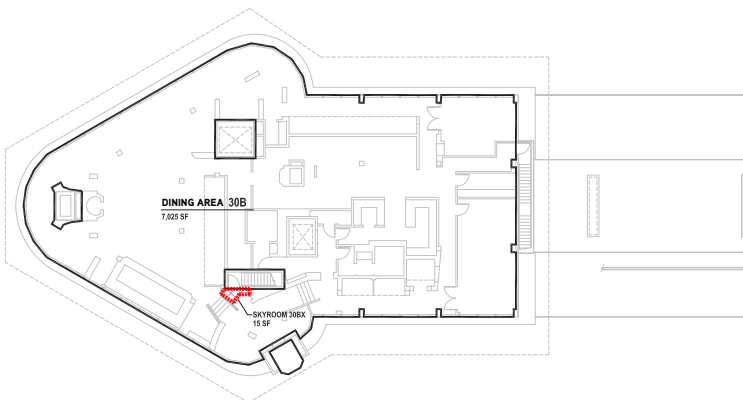
Ideally situated along the harbor between the Hilton Hawaiian Village and the Modern Honolulu, with numerous hotels including the Prince Waikiki Hotel just steps away, Ilikai is located in one of the most densely populated hotel and residential neighborhoods on the island.

A RARE OPPORTUNITY ON TOP OF THE ILIKAI

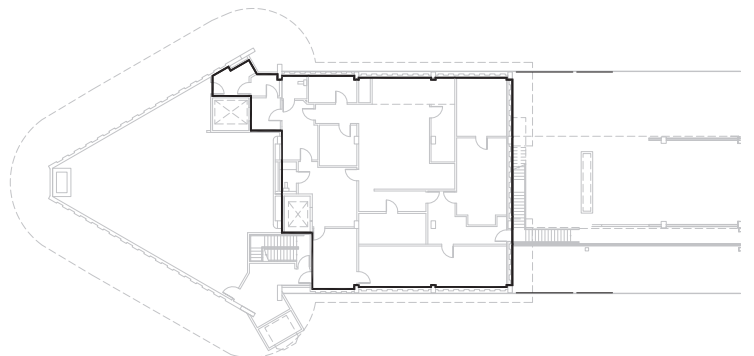


- 13,000 SF rooftop restaurant space in iconic building
- Oceanfront Waikiki location
- 360 degree views of ocean, sunset, mountains, and city skyline
- 1,009 hotel/condo units in building below

Dining Area
Floor 30



Kitchen and Storage
Floor 29



SITE PLAN



102 A	470 SF	Dave's Ice Cream
102 B	1,428 SF	Ilikai Massage Spa
102 C	957 SF	SOHO New York
102 E	1,975 SF	Ilikai Hotel & Luxury Suites
102 F	846 SF	InCare Hawaii
102 G	656 SF	Ala Wai Yatch Brokerage
102 H,J	1,313 SF	Marina Hawaii Vacations
102 K	648 SF	Gift Paradise
103 A	531 SF	Marc Photo
103 B	702 SF	Available
103 C	1,569 SF	Shell Vacations Club
103 D	574 SF	Aroma Coffee
103 E	480 SF	Simply Wood
103 J,K,L,M	11,777 SF	Cinnamon's
105 A	3,490 SF	Kuai Market
105 B	2,564 SF	Waikiki Marina Resort
105 C	585 SF	Available
101 E	345 SF	Available Kiosk
101 F	355 SF	Hertz





2017 HAWAII VISITOR STATISTICS

Total Visitors:	9,256,761
Avg. Length of Stay:	9.01 days
Visitor Expenditure:	\$16,734 Million
Spending Per Day:	\$200.6

TRAFFIC COUNTS - 24 HR PERIOD

Ala Moana Blvd @ Kalia Road	20,100 cars per day
Ala Moana Blvd @ Ala Wai Canal	33,700 cars per day

CONTACT US

EMALIA PIETSCH (S)

Vice President

808 523 9710

emalia.pietsch@colliers.com

SCOTT L. MITCHELL (B) SIOR

Executive Vice President

808 523 9702

scott.mitchell@colliers.com

COLLIERS INTERNATIONAL

220 S. King Street, Suite 1800

Honolulu, Hawaii 96813

colliers.com/hawaii



This document has been prepared by Colliers International for advertising and general information only. Colliers International makes no guarantees, representations or warranties of any kind, expressed or implied, regarding the information including, but not limited to, warranties of content, accuracy and reliability. Any interested party should undertake their own inquiries as to the accuracy of the information. Colliers International excludes unequivocally all inferred or implied terms, conditions and warranties arising out of this document and excludes all liability for loss and damages arising there from. This publication is the copyrighted property of Colliers International and/or its licensor(s). ©2018. All rights reserved.