

±3,000 SF Office with Small Warehouse

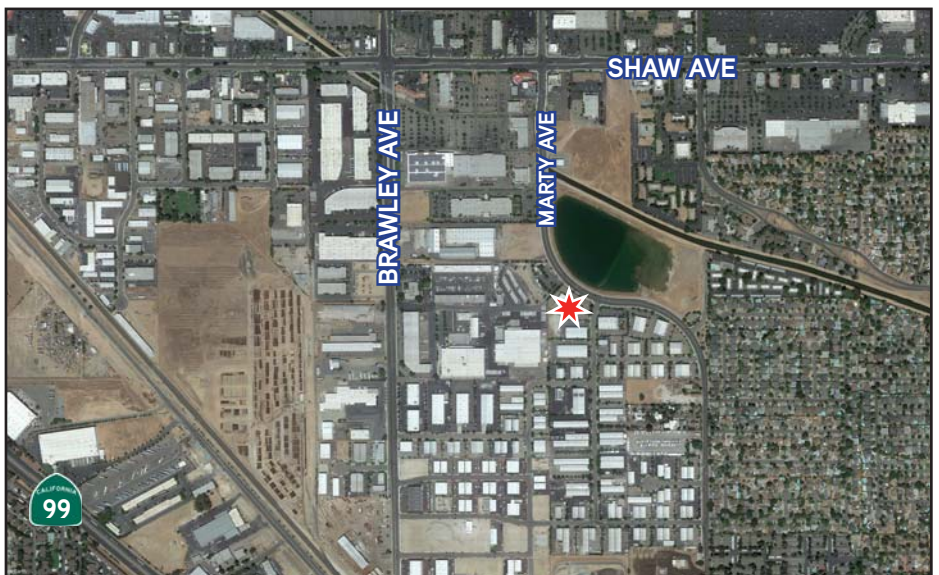


FOR LEASE

4589 N. Marty Ave., #102
Fresno, California 93722

BUK WAGNER
559 256 2451
buk.wagner@colliers.com
BRE #01296746

CHARLIE SCHUH
559 221 7393
charlie.schuh@colliers.com
BRE #01992259

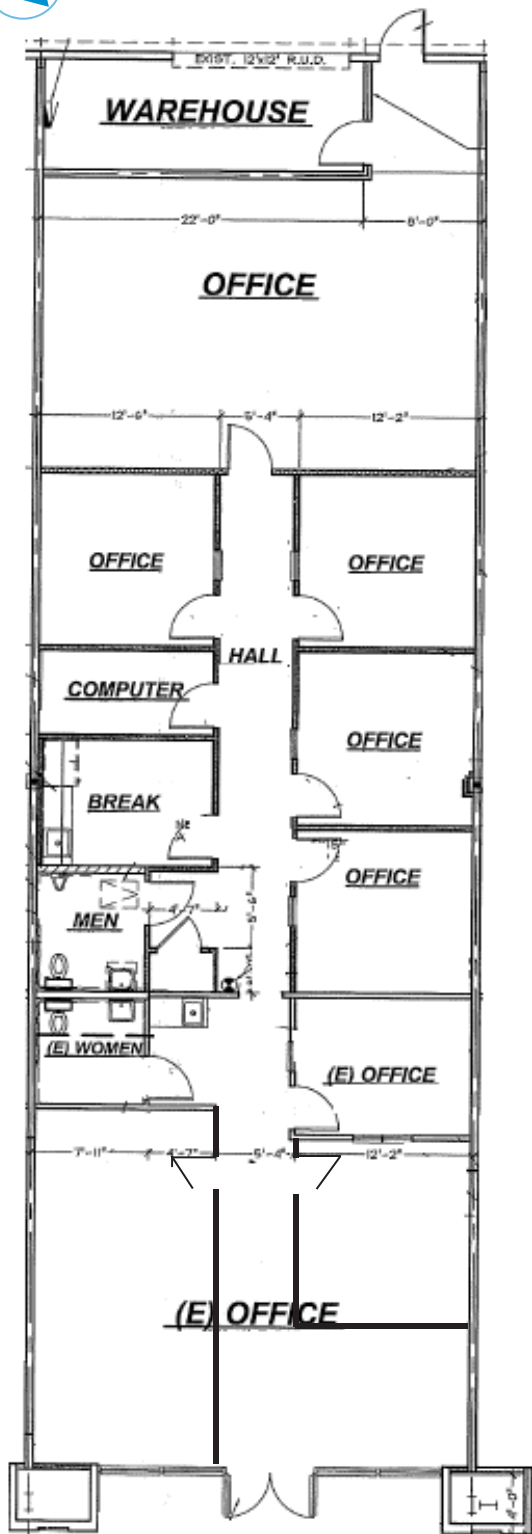


Property Information

- › **Lease Rate:** \$2,550/mo., Gross (\$0.85 psf)
- › **Square Footage:** ±3,000 SF office with small warehouse
- › **Zoning:** Industrial Light (IL)



FOR LEASE > 4589 N. Marty Avenue, Suite 102 | Fresno, CA



| | |
|---------------|---|
| Lease Rate: | \$2,550/month, Gross (\$0.85 psf) Water, sewer, trash, property taxes and property insurance paid by Landlord. |
| Size: | ±3,000 SF |
| Zoning: | Industrial Light (IL) |
| Roll-Ups: | Ground level - 1 @ 12' x 12' |
| Warehouse: | ±176 SF currently, but could be expanded |
| Yard: | Yes (Shared Fenced) |
| Construction: | Metal Frame/Metal & Stucco Exterior, built in 2004 |

Comments: Inline suite, mostly office. Owner will consider expanding warehouse. Located just south of West Shaw near many amenities.

Contact Us

BUK WAGNER
559 221 2451
buk.wagner@colliers.com
BRE #01296746

CHARLIE SCHUH
559 221 7393
charlie.schuh@colliers.com
BRE #01992259

This document has been prepared by Colliers International for advertising and general information only. Colliers International makes no guarantees, representations or warranties of any kind, expressed or implied, regarding the information including, but not limited to, warranties of content, accuracy and reliability. Any interested party should undertake their own inquiries as to the accuracy of the information. Colliers International excludes unequivocally all inferred or implied terms, conditions and warranties arising out of this document and excludes all liability for loss and damages arising there from. This publication is the copyrighted property of Colliers International and/or its licensor(s). ©2016. All rights reserved.



COLLIERS INTERNATIONAL
7485 N. Palm Avenue, #110
Fresno, California 93711
559 221 1271
www.colliers.com/fresno