

FOR LEASE > MEADOW WOOD CROWN PLAZA

1575 Delucchi Lane

RENO | NEVADA, 89502



**Interior and Exterior Remodel in the Works!
Building System Upgrades Underway! New Management & Ownership!**



DON'T MISS THIS OPPORTUNITY, SPACE IS LEASING QUICKLY!

AVAILABLE SPACE: 1,181 SF - 6,318 SF

Suite 104: 1,423 sf ¹	Suite 114B: 1,181 sf ¹	Suite 121: 3,189 sf ³
Suite 105: 1,626 sf	Suite 116: 1,830 sf	Suite 207: 1,421 sf ⁴
Suite 114: 1,641 sf ²	Suite 118: 1,875 sf ²	Suite 215: 1,213 sf ⁴
Suite 110: 2,855 sf ¹	Suite 119: 3,128 sf ³	

1: Suite 110 can be combined with suite 104 and/or 114B to accommodate 4,036 sf, 4,278 sf or 5,459 sf.

2: Can be combined for a total of 3,516 sf
3: Can be combined for a total of 6,318 sf
4: Can be combined for a total of 2,634 sf

AVAILABLE SPACE

- > Great pricing for the Meadowood Submarket
- > Well maintained landscaping that is undergoing an upgrade and remodel
- > Professionally managed
- > Variety of suite sizes and layouts available
- > Common area lobby, restrooms and corridors
- > Mailing station with FedEx and UPS drops
- > Rate includes all operating expenses, utilities and janitorial
- > AT&T fiber service available at this property
- > Owner willing to perform tenant improvements for qualified transactions

STARTING LEASE RATE: \$1.25/sf/mo Full Service (Includes Janitorial)

Lease rate will depend on term, tenant improvements and tenant's credit

For more information,
please contact:

Reno Office Services

MELISSA MOLYNEAUX, SIOR, CCIM
Senior Vice President
Executive Managing Director
+1 775 823 4674 DIRECT
+1 775 762 7990 CELL
Melissa.Molyneaux@colliers.com
NV Lic BS.0144599

LANDON GONZALEZ
Senior Associate
+1 775 823 4663 DIRECT
+1 775 741 6397 CELL
Landon.Gonzalez@colliers.com
NV Lic S.0179599

The information furnished has been obtained from sources we deem reliable and is submitted subject to errors, omissions and changes. Although Colliers Nevada, LLC has no reason to doubt its accuracy, we do not guarantee it. All information should be verified by the recipient prior to lease, purchase, exchange or execution of legal documents.

Colliers International
5520 Kietzke Lane, Suite 300
Reno, Nevada 89511
P: 775.823.9666 | F: 775.823.4699
www.colliers.com/reno

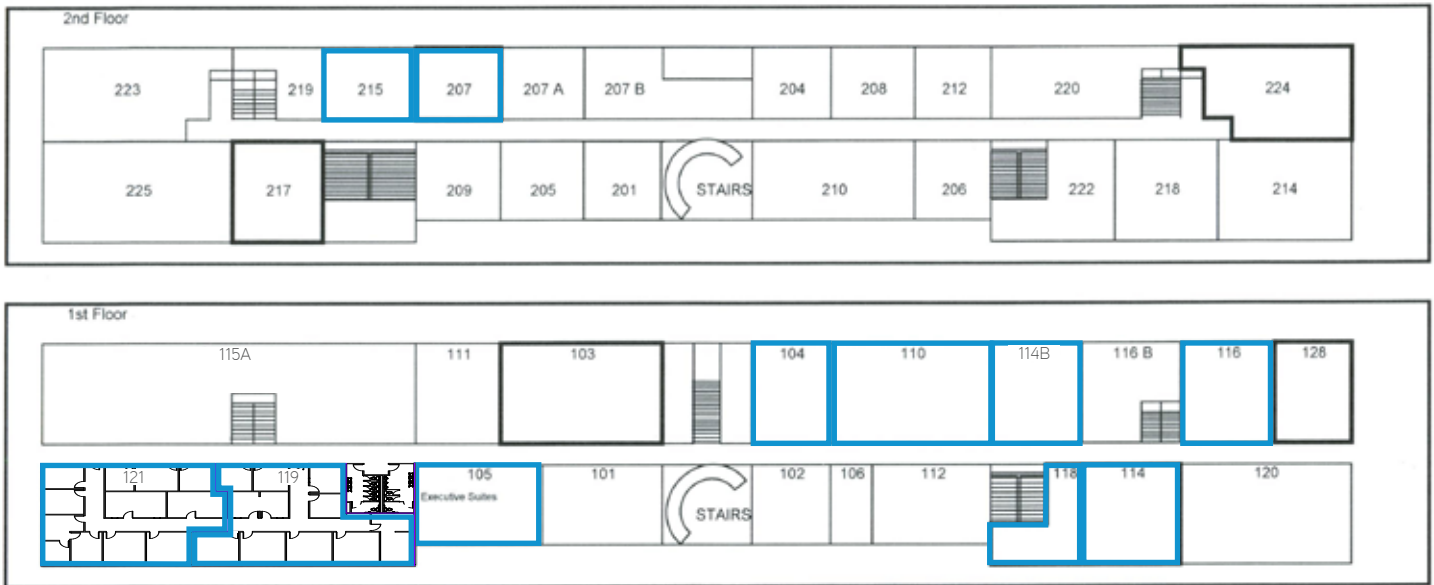
FOR LEASE > MEADOW WOOD CROWN PLAZA

1575 Delucchi Lane

RENO | NEVADA, 89502



SITE PLAN



 Available suites

Not to Scale

SUITE PHOTOS - TYPICAL FINISHES SHOWN



The information furnished has been obtained from sources we deem reliable and is submitted subject to errors, omissions and changes. Although Colliers Nevada, LLC has no reason to doubt its accuracy, we do not guarantee it. All information should be verified by the recipient prior to lease, purchase, exchange or execution of legal documents.

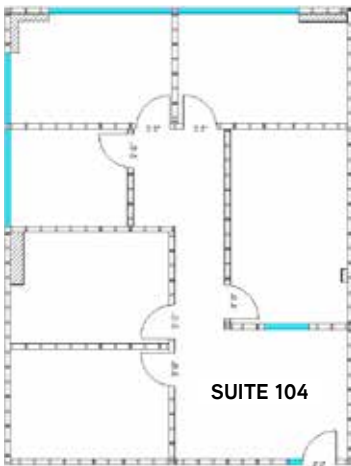
Colliers International
5520 Kietzke Lane, Suite 300
Reno, Nevada 89511
P: 775.823.9666 | F: 775.823.4699
www.colliers.com/reno



FLOOR PLANS - NOT TO SCALE

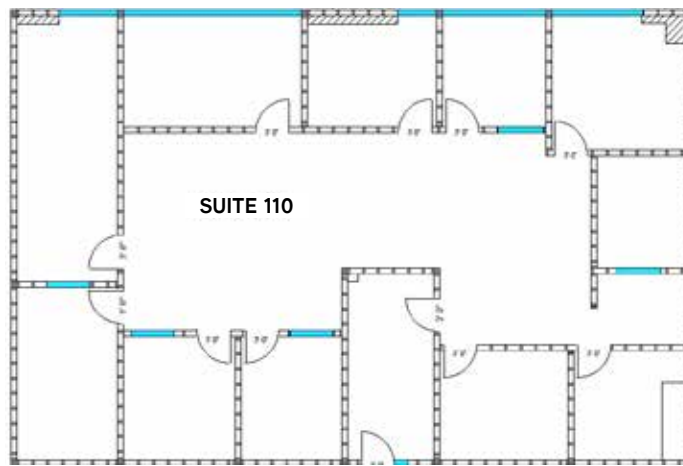
SUITES 104, 110 & 114B

Suite 110 can be combined with suite 104 and/or 114B to accommodate 4,036 sf, 4,278 sf or 5,459 sf.



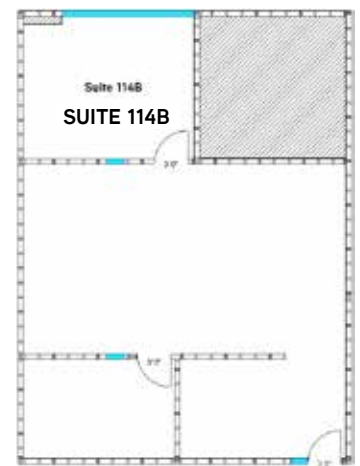
SUITE 104 - 1,423 sf

Layout includes reception area, five offices and conference room.



SUITE 110 - 2,855 sf

Layout includes numerous private offices, open area/bull pen, private reception and storage.

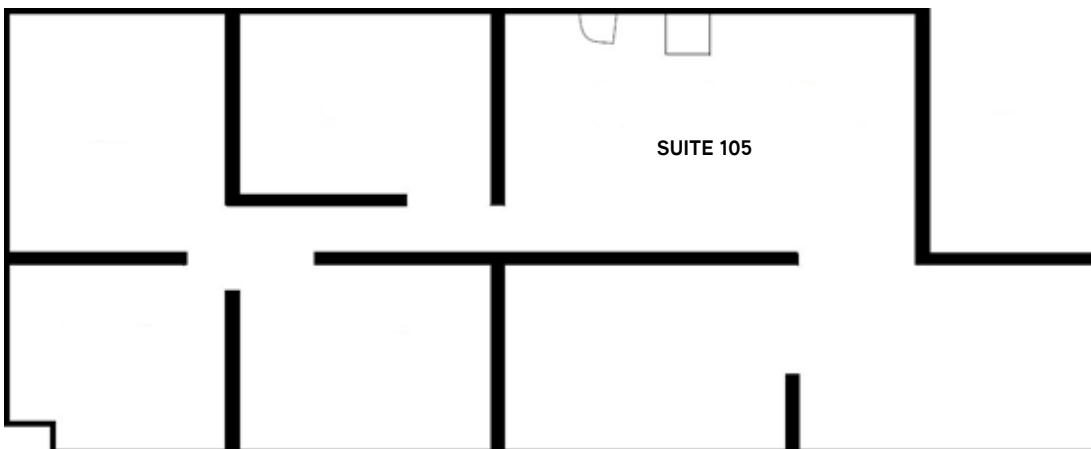


SUITE 114B - 1,181 sf

Layout includes reception area, two offices and open workspace.

SUITE 105 - 1,626 sf

Layout includes reception area, five offices and conference room.

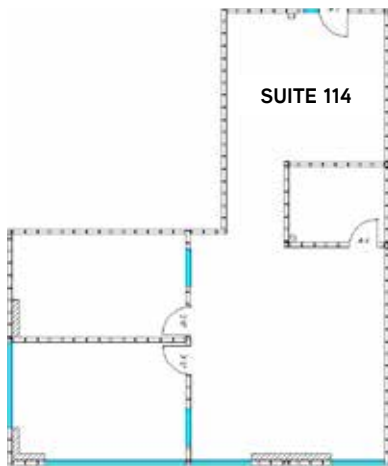




FLOOR PLANS - NOT TO SCALE

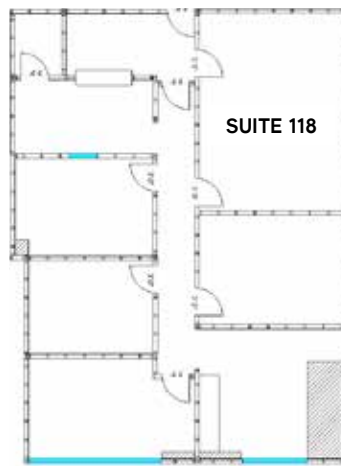
SUITES 114 & 118

Can be combined for a total of 3,516 sf



SUITE 114 - 1,641 sf

Layout features open space and two offices.

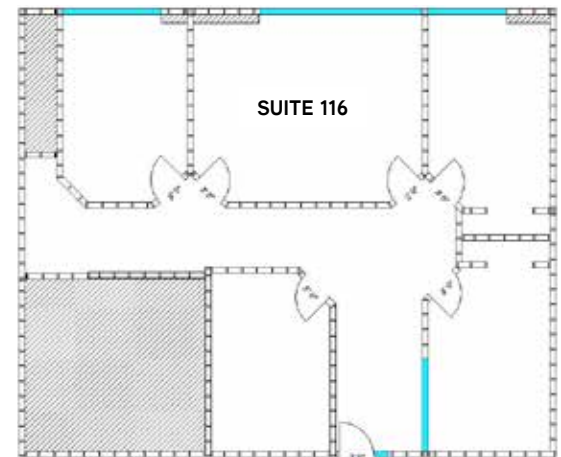


SUITE 118 - 1,875 sf

Layout includes private reception area, offices, work area, conference room and storage.

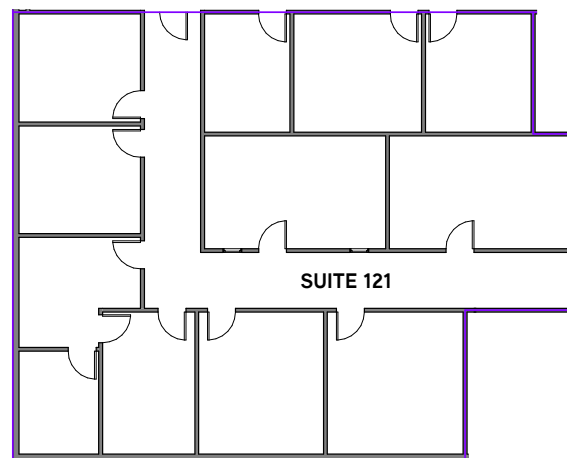
SUITE 116 - 1,830 sf

Layout includes several private offices, conference room, and storage.



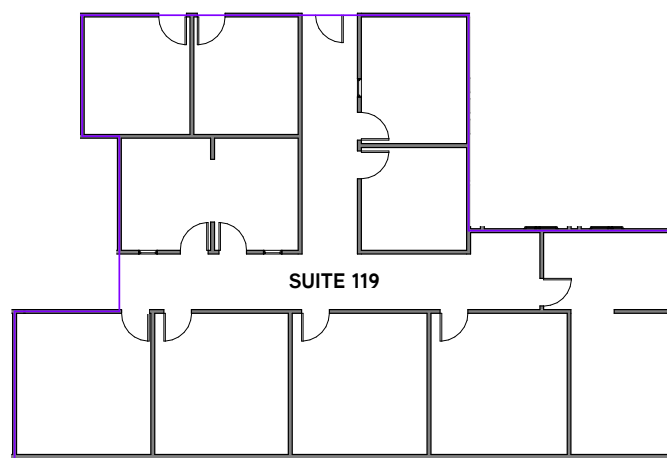
SUITES 119 & 121

Can be combined for a total of 6,318 sf



SUITE 121 - 3,189 sf

Layout includes many private offices and conference room.



SUITE 119 - 3,128 sf

Layout includes many private offices and conference room.

FOR LEASE > MEADOW WOOD CROWN PLAZA

1575 Delucchi Lane

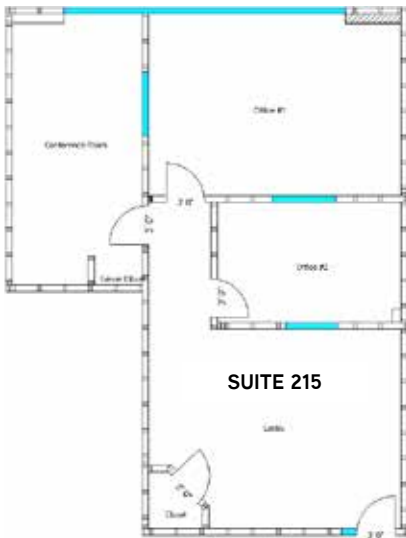
RENO | NEVADA, 89502



FLOOR PLANS - NOT TO SCALE

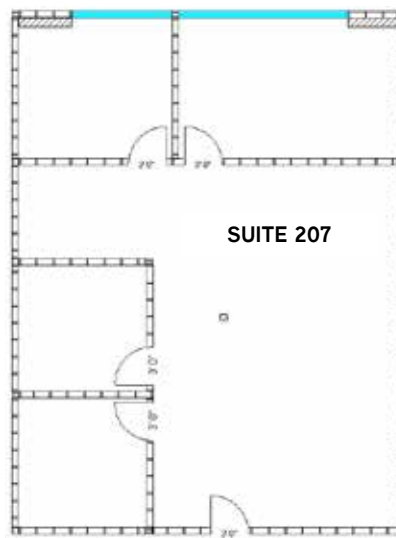
SUITES 207 & 215

Can be combined for a total of 2,634 sf



SUITE 215 - 1,213 sf

Layout includes private reception area, offices, and conference room.



SUITE 207 - 1,421 sf

Layout includes private offices, conference room, and open bull pen.

The information furnished has been obtained from sources we deem reliable and is submitted subject to errors, omissions and changes. Although Colliers Nevada, LLC has no reason to doubt its accuracy, we do not guarantee it. All information should be verified by the recipient prior to lease, purchase, exchange or execution of legal documents.

Colliers International
5520 Kietzke Lane, Suite 300
Reno, Nevada 89511
P: 775.823.9666 | F: 775.823.4699
www.colliers.com/reno

FOR LEASE > MEADOW WOOD CROWN PLAZA

1575 Delucchi Lane

RENO | NEVADA, 89502



AERIAL MAP



For more information,
please contact:

Reno Office Services

MELISSA MOLYNEAUX, SIOR, CCIM
Senior Vice President
Executive Managing Director
+1 775 823 4674 DIRECT
+1 775 762 7990 CELL
Melissa.Molyneaux@colliers.com
NV Lic BS.0144599

LONDON GONZALEZ
Senior Associate
+1 775 823 4663 DIRECT
+1 775 741 6397 CELL
Landon.Gonzalez@colliers.com
NV Lic S.0179599

The information furnished has been obtained from sources we deem reliable and is submitted subject to errors, omissions and changes. Although Colliers Nevada, LLC has no reason to doubt its accuracy, we do not guarantee it. All information should be verified by the recipient prior to lease, purchase, exchange or execution of legal documents.

Colliers International
5520 Kietzke Lane, Suite 300
Reno, Nevada 89511
P: 775.823.9666 | F: 775.823.4699
www.colliers.com/reno