

FOR LEASE > 5,436 Sq. Ft.

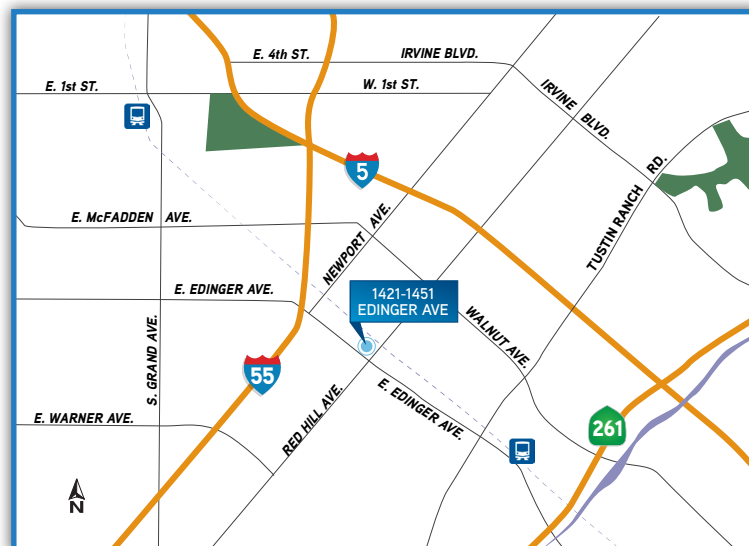
Pacific Tustin Commercenter

1451 Edinger Avenue, Unit A • Tustin



Property Highlights

- > This 69,930 square foot high image multi-tenant business center is located on the signalized corner of Edinger Avenue and Red Hill Avenue in the city of Tustin.
- > High Image Business Park Environment
- > ±3,940 Sq. Ft. of Two-Story HVAC Office Area
- > 24' Minimum Warehouse Ceiling Height
- > One (1) Ground Level Loading Door
- > Parking Ratio: 3.5:1,000
- > Excellent Exterior Glassline
- > Professionally Managed Business Park
- > Major Street Frontage on Edinger Avenue
- > Excellent Central Orange County Location
- > Immediate Access to the Costa Mesa (55) and Santa Ana (5) Freeways. Close Proximity to the San Diego (405) Freeway and (261 & 241) Transportation Corridors.



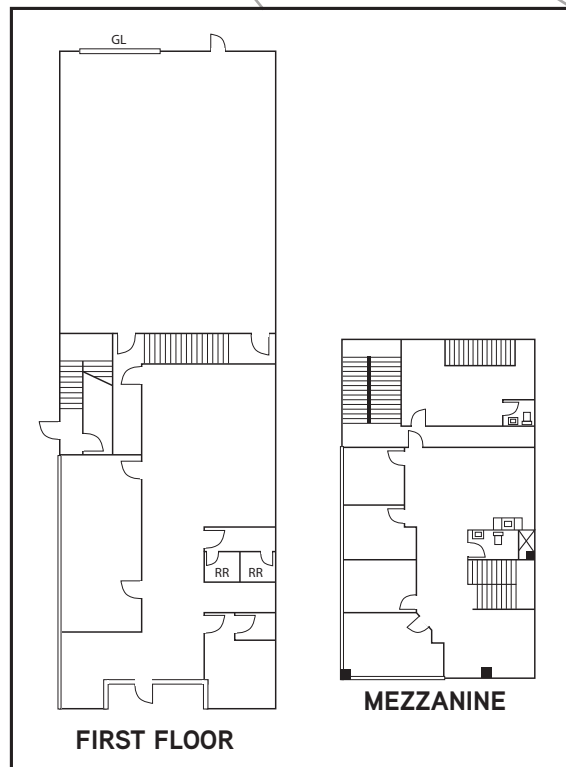
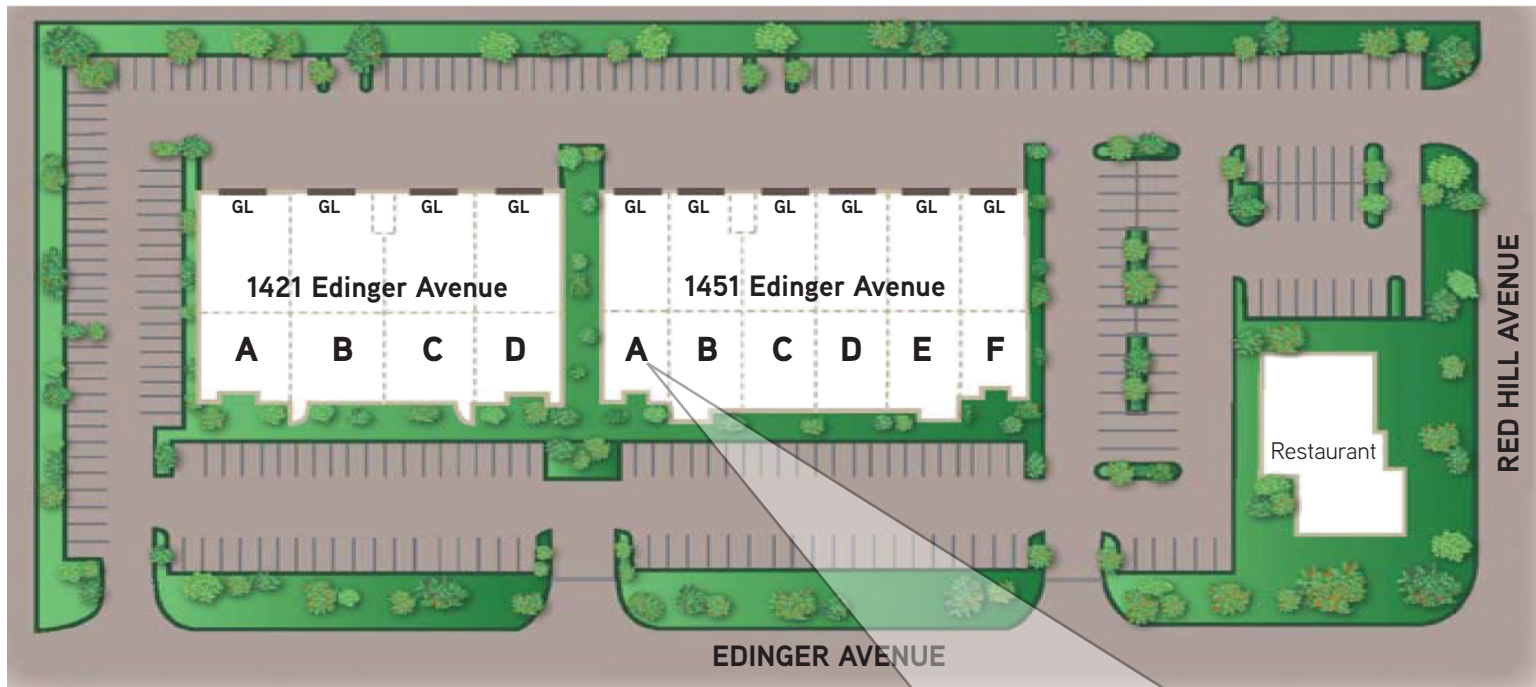
BRIAN CHASTAIN
949 724 5520
brian.chastain@colliers.com
License No. 01835064

CHUCK WILSON
949 724 5502
chuck.wilson@colliers.com
License No. 00947221

COLLIERS INTERNATIONAL
3 Park Plaza, Suite 1200
Irvine, CA 92614
www.colliers.com

FOR LEASE > 5,436 Sq. Ft. Pacific Tustin Commercenter

1451 Edinger Avenue, Unit A • Tustin



Colliers International makes no guarantees, representations or warranties of any kind, expressed or implied, regarding the information including, but not limited to, warranties of content, accuracy and reliability.
This publication is the copyrighted property of Colliers International and /or its licensor(s). 2010. All rights reserved.

BRIAN CHASTAIN
949 724 5520
brian.chastain@colliers.com
License No. 01835064

CHUCK WILSON
949 724 5502
chuck.wilson@colliers.com
License No. 00947221

COLLIERS INTERNATIONAL
3 Park Plaza, Suite 1200
Irvine, CA 92614
www.colliers.com