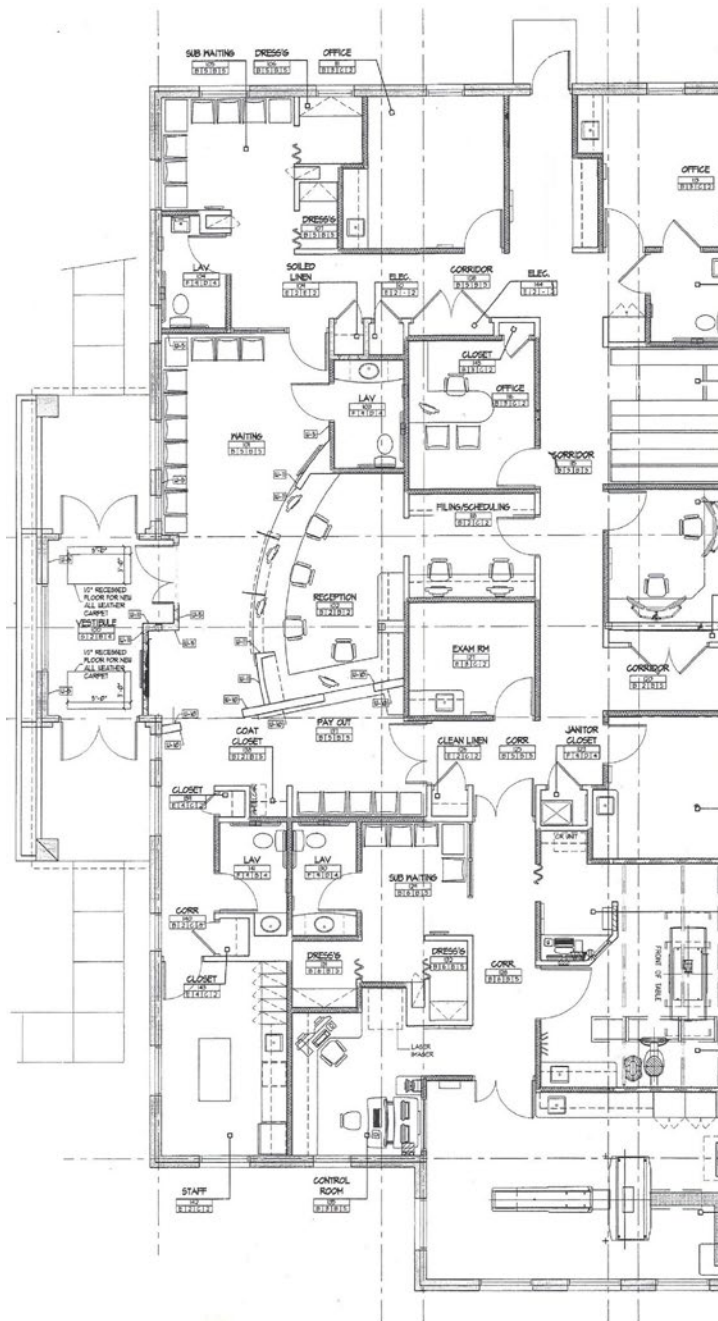


# Office Condo

1051 WEST SHERMAN AVENUE, VINELAND

UNIT 4A  
4,300 RSF



The foregoing information was furnished to us by sources which we deem to be reliable, but no warranty or representation is made as to the accuracy thereof. Subject to correction of errors, omissions, change of price, prior sale or withdrawal from market without notice.



@ColliersSNJ



ColliersSNJ



colliers.com/mountlaurel

TONY DIDIO  
Senior Vice President  
+1 609 820 5900  
MOUNT LAUREL, NJ  
tony.didio@colliers.com

COLLIERS INTERNATIONAL  
1317 Route 73  
Suite 109  
Mount Laurel, NJ 08054  
+1 856 234 9300

