

FOR LEASE

# 4,300 SF Office Condo



1051 WEST SHERMAN AVENUE, UNIT 4A, VINELAND, NEW JERSEY



## Property Features

- › 4,300 SF single-story office condominium
- › Construction - timber and masonry frame with brick and stucco exterior
- › Fully heated by gas-fired forced hot air system and cooled by central system
- › Built in 2005
- › Zoned IN-1 (Institutional)
- › Conveniently located less than half a mile from Route 47 and less than a mile from Route 55
- › Minutes away from the Inspira Medical Center, downtown Vineland and the Cumberland Mall

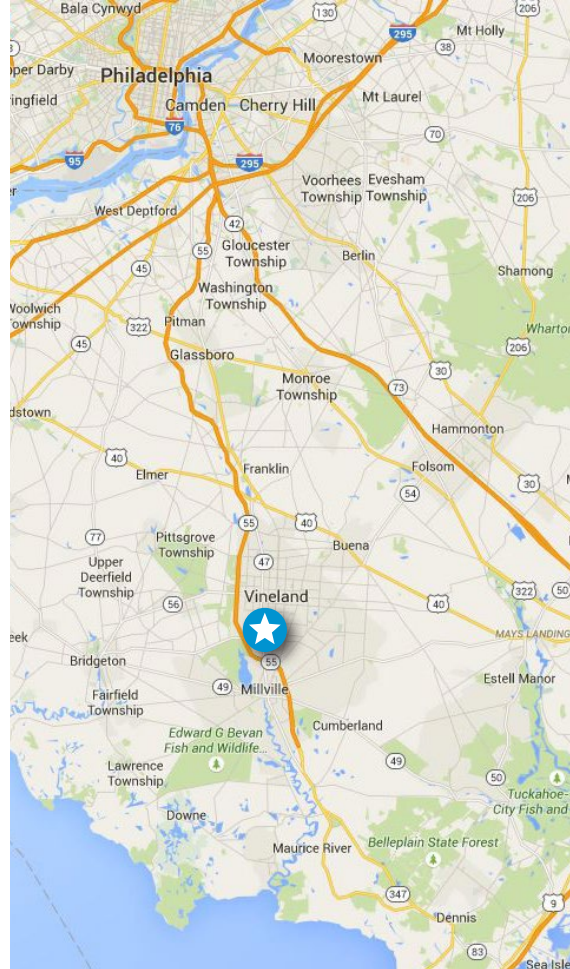
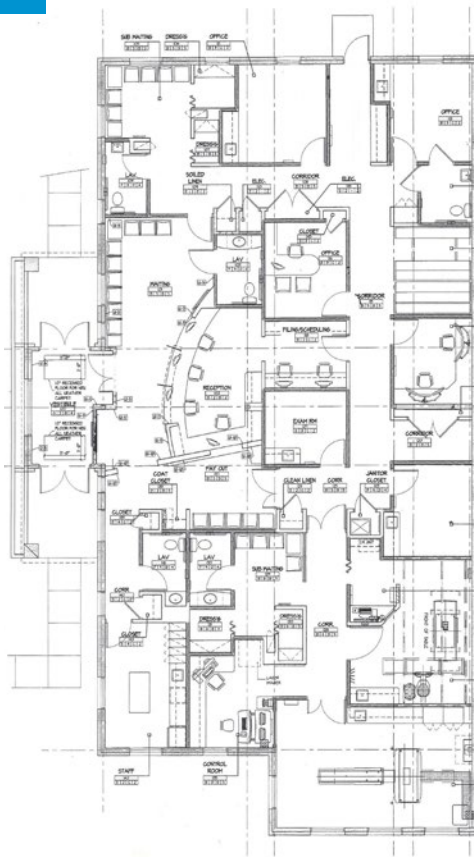
## Contact

TONY DIDIO, SIOR  
SENIOR VICE PRESIDENT  
+1 609 820 5900  
[tony.didio@colliers.com](mailto:tony.didio@colliers.com)

**COLLIERS INTERNATIONAL**  
1317 Route 73  
Suite 109  
Mount Laurel, NJ 08054  
+1 856 234 9300  
[www.colliers.com/mountlaurel](http://www.colliers.com/mountlaurel)



## FLOOR PLAN



## Contact

TONY DIDIO, SIOR  
SENIOR VICE PRESIDENT  
+1 609 820 5900  
[tony.didio@colliers.com](mailto:tony.didio@colliers.com)



COLLIERS INTERNATIONAL

1317 Route 73

Suite 109

Mount Laurel, NJ 08054

+1 856 234 9300

[www.colliers.com/mountlaurel](http://www.colliers.com/mountlaurel)



@ColliersSNJ



ColliersSNJ



[colliers.com/mountlaurel](http://colliers.com/mountlaurel)

The foregoing information was furnished to us by sources which we deem to be reliable, but no warranty or representation is made as to the accuracy thereof. Subject to correction of errors, omissions, change of price, prior sale or withdrawal from market without notice. The aerial image is intended to provide a general outline of the subject property. It is not a survey nor should it be relied upon for purposes of determining property lines or boundaries.