

FOR LEASE > MEADOW WOOD CROWN PLAZA

# 1575 Delucchi Lane

RENO | NEVADA, 89502



**UNDER NEW OWNERSHIP & MANAGEMENT!**



**DON'T MISS THIS OPPORTUNITY, SPACE IS LEASING QUICKLY!**

## AVAILABLE SPACE

Suite 114: 1,569 sf    Suite 207: 1,491 sf  
Suite 116A: 1,140 sf    Suite 208: 1,434 sf

## AVAILABLE SPACE

- > Great pricing for the Meadowood Submarket
- > Well maintained landscaping
- > Professionally managed
- > Variety of suite sizes available
- > Common area lobby, restrooms and corridors
- > Mailing station with FedEx and UPS drops
- > Rate includes all operating expenses, utilities and janitorial
- > AT&T fiber service available at this property

**LEASE PRICE:    \$1.25/sf/mo Full Service (Includes Janitorial)**

For more information,  
please contact:

## Reno Office Services

MELISSA MOLYNEAUX, SIOR, CCIM  
Senior Vice President  
Executive Managing Director  
+1 775 823 4674 DIRECT  
+1 775 762 7990 CELL  
[Melissa.Molyneaux@colliers.com](mailto:Melissa.Molyneaux@colliers.com)

LANDON GONZALEZ  
Senior Associate  
+1 775 823 4663 DIRECT  
+1 775 741 6397 CELL  
[Landon.Gonzalez@colliers.com](mailto:Landon.Gonzalez@colliers.com)

The information furnished has been obtained from sources we deem reliable and is submitted subject to errors, omissions and changes. Although Colliers Nevada, LLC has no reason to doubt its accuracy, we do not guarantee it. All information should be verified by the recipient prior to lease, purchase, exchange or execution of legal documents.

Colliers International  
5520 Kietzke Lane, Suite 300  
Reno, Nevada 89511  
P: 775.823.9666 | F: 775.823.4699  
[www.colliers.com/reno](http://www.colliers.com/reno)

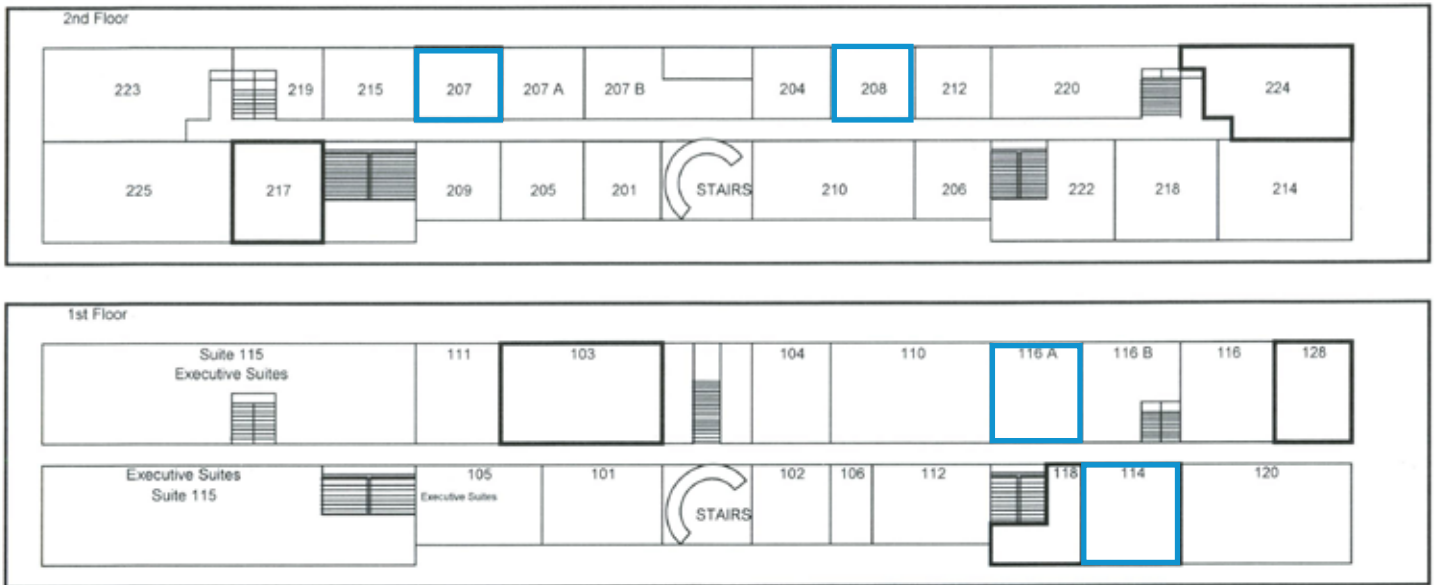
FOR LEASE > MEADOW WOOD CROWN PLAZA

# 1575 Delucchi Lane

RENO | NEVADA, 89502



## SITE PLAN



 Available suites

*Not to Scale*

## SUITE PHOTOS - TYPICAL FINISHES SHOWN



The information furnished has been obtained from sources we deem reliable and is submitted subject to errors, omissions and changes. Although Colliers Nevada, LLC has no reason to doubt its accuracy, we do not guarantee it. All information should be verified by the recipient prior to lease, purchase, exchange or execution of legal documents.

Colliers International  
5520 Kietzke Lane, Suite 300  
Reno, Nevada 89511  
P: 775.823.9666 | F: 775.823.4699  
[www.colliers.com/reno](http://www.colliers.com/reno)

# 1575 Delucchi Lane

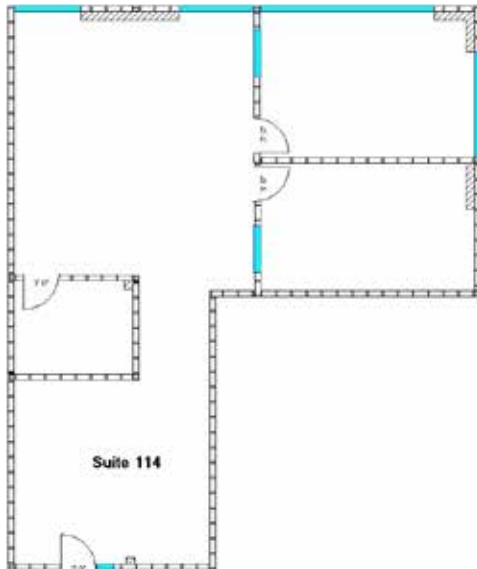
RENO | NEVADA, 89502



## FLOOR PLANS - NOT TO SCALE

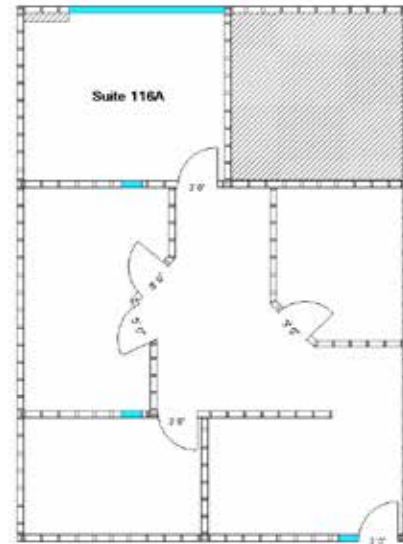
### SUITE 114 - 1,569 SF

Layout features open space and two offices.



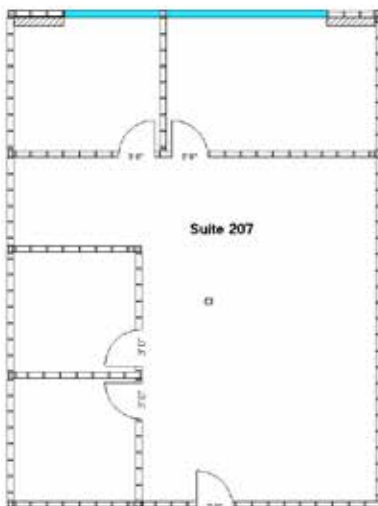
### SUITE 116A - 1,140 SF

Layout includes reception area and several offices. The space is ideal for medical professionals.



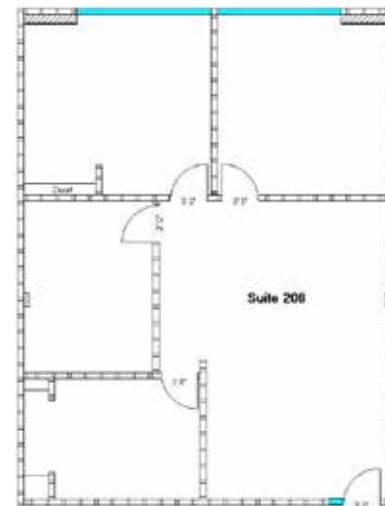
### SUITE 207 - 1,491 SF

Layout includes private offices, conference room, and open bull pen.



### SUITE 208 - 1,434 SF

Layout includes several private offices, break/copy room, and open bull pen.



FOR LEASE > MEADOW WOOD CROWN PLAZA

# 1575 Delucchi Lane

RENO | NEVADA, 89502



## AERIAL MAP



For more information,  
please contact:

**Reno Office Services**

MELISSA MOLYNEAUX, SIOR, CCIM  
Senior Vice President  
Executive Managing Director  
+1 775 823 4674 DIRECT  
+1 775 762 7990 CELL  
[Melissa.Molyneaux@colliers.com](mailto:Melissa.Molyneaux@colliers.com)

LONDON GONZALEZ  
Senior Associate  
+1 775 823 4663 DIRECT  
+1 775 741 6397 CELL  
[Landon.Gonzalez@colliers.com](mailto:Landon.Gonzalez@colliers.com)

The information furnished has been obtained from sources we deem reliable and is submitted subject to errors, omissions and changes. Although Colliers Nevada, LLC has no reason to doubt its accuracy, we do not guarantee it. All information should be verified by the recipient prior to lease, purchase, exchange or execution of legal documents.

Colliers International  
5520 Kietzke Lane, Suite 300  
Reno, Nevada 89511  
P: 775.823.9666 | F: 775.823.4699  
[www.colliers.com/reno](http://www.colliers.com/reno)