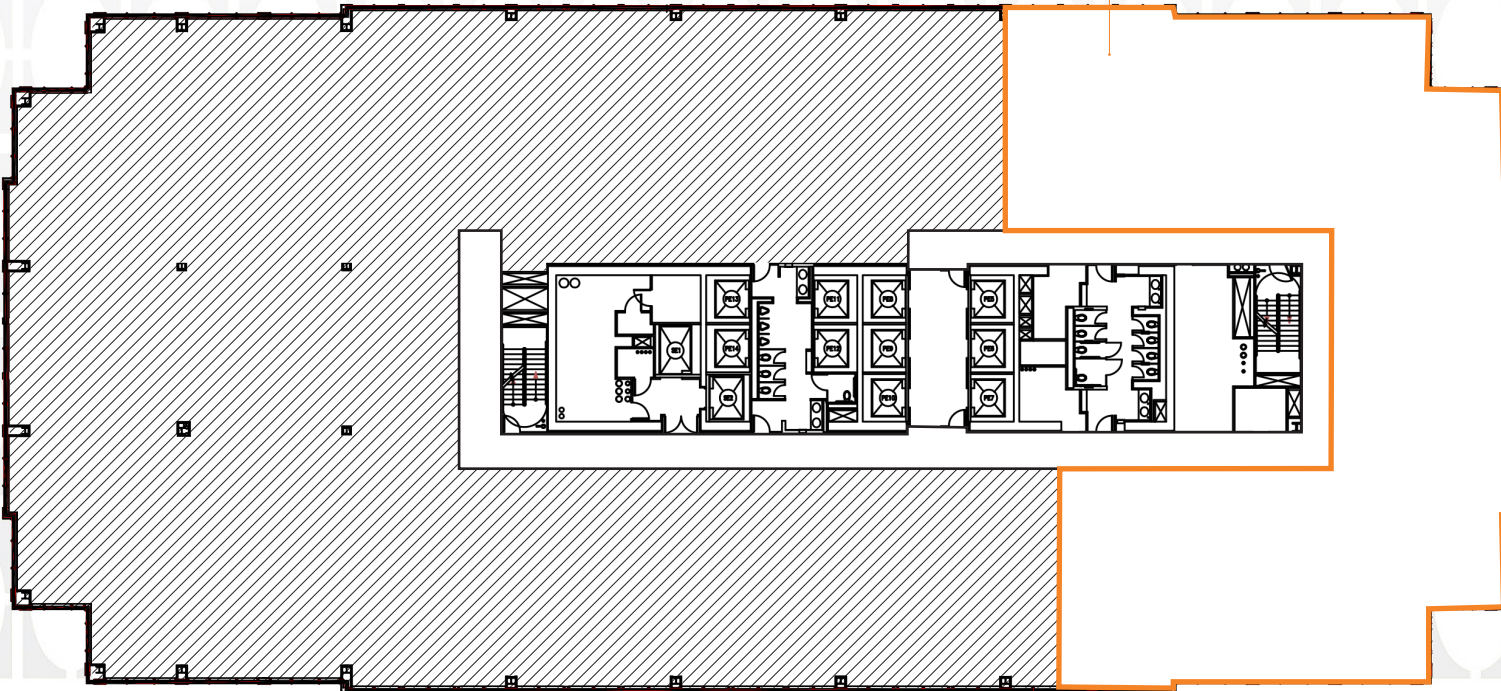


22ND FLOOR
50 SOUTH SIXTH STREET
MINNEAPOLIS, MN 55402



FIFTY
SOUTH
SIXTH

Available 9,663
Square Feet
Rentable Area



MANAGED BY:

Hines

LEASED BY:

Colliers
INTERNATIONAL

FOR ADDITIONAL INFORMATION AND AVAILABILITY :

NILS SNYDER CCIM, SIOR
952 837 3020
nils.snyder@colliers.com