

FOR LEASE >

## 9,966 SF Industrial Warehouse



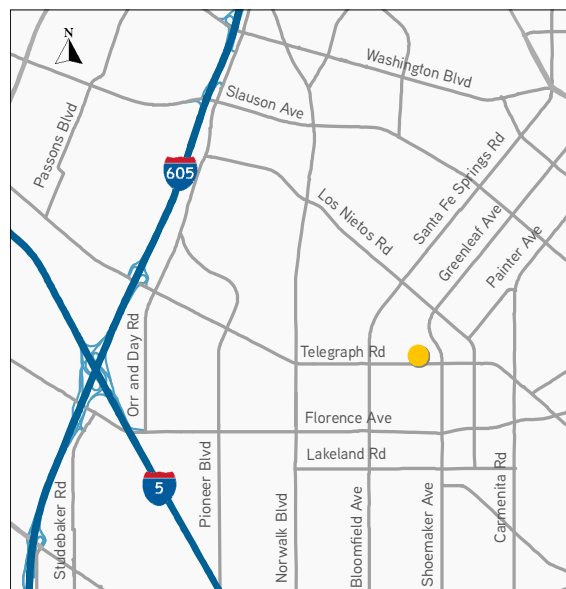
# 12851 TELEGRAPH ROAD | Santa Fe Springs, CA

Professionally Owned and  
Operated By:



### Property Highlights

- Class A Corporate Image Business Park
- Telegraph Road Frontage
- 24' Clearance
- 2 Dock High Loading Positions
- 1 Ground Level Position
- 1,115 SF of Office
- Above Standard Parking
- Excellent 5 and 605 Freeway Access
- Professionally Managed by Terreno Realty



### Contact Us



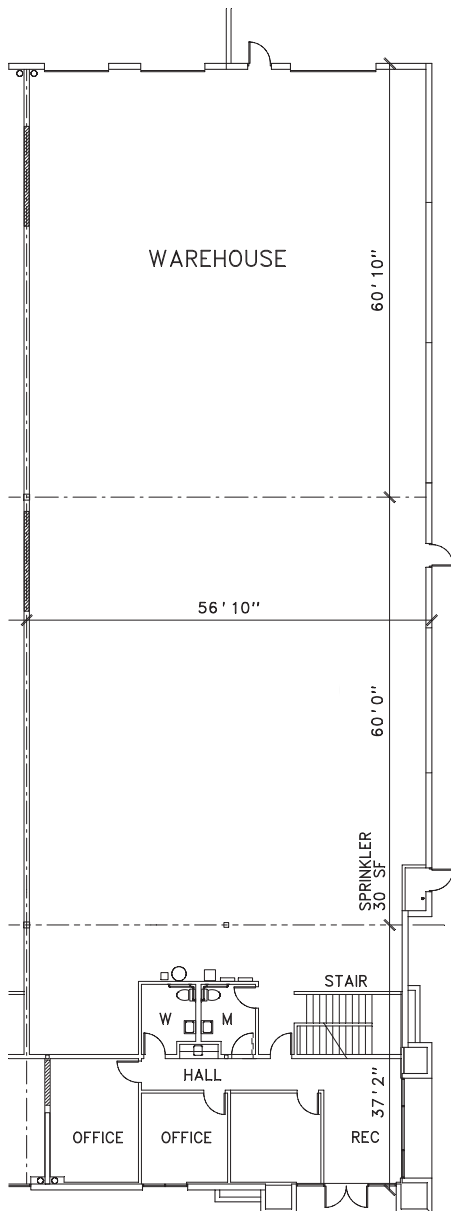
**CHRIS SHEEHAN, SIOR**  
Executive Vice President  
+ 1 310 321 1831  
chris.sheehan@colliers.com  
License No. 01202469

**CONNOR REEVES**  
Associate  
+ 1 310 321 1889  
connor.reeves@colliers.com  
License No. 01983477

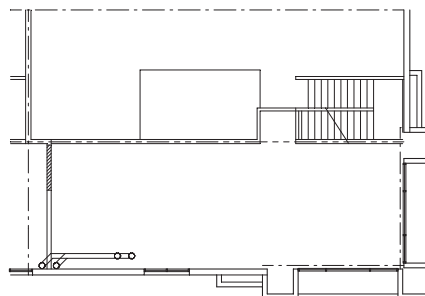
**JOEL MCCABE**  
President  
+ 1 562 926 3400  
joel.mccabe@verizon.net  
License No. 00894793



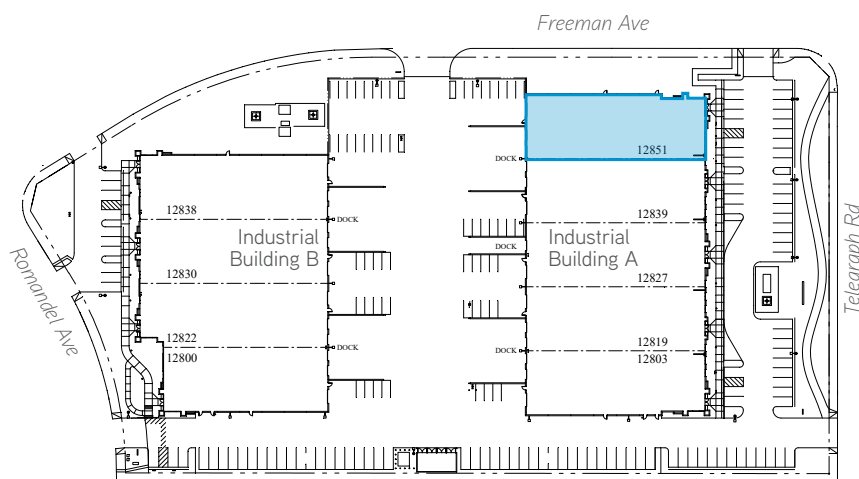
## Site Plan



First Floor



Mezzanine



## Contact Us

**CHRIS SHEEHAN, SIOR**

+1 310 321 1831

chris.sheehan@colliers.com

Lic. No. 01202469

**CONNOR REEVES**

+1 310 321 1889

connor.reeves@colliers.com

Lic. No. 01983477

**JOEL MCCABE**

+1 562 926 3400

jmccabe@mccabeco.net

Lic. No. 00894793

This document has been prepared by Colliers International for advertising and general information only. Colliers International makes no guarantees, representations or warranties of any kind, expressed or implied, regarding the information including, but not limited to, warranties of content, accuracy and reliability. Any interested party should undertake their own inquiries as to the accuracy of the information. Colliers International excludes unequivocally all inferred or implied terms, conditions and warranties arising out of this document and excludes all liability for loss and damages arising there from. This publication is the copyrighted property of Colliers International and/or its licensor(s). ©2018. All rights reserved.

**Colliers International**

2121 Rosecrans Ave | Suite 3301

El Segundo, CA 90245

P: +1 310 787 1000

Lic. No. 01908231



Accelerating success.