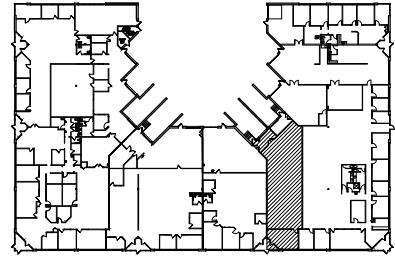


# SQUARE FOOTAGE SUMMARY

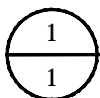
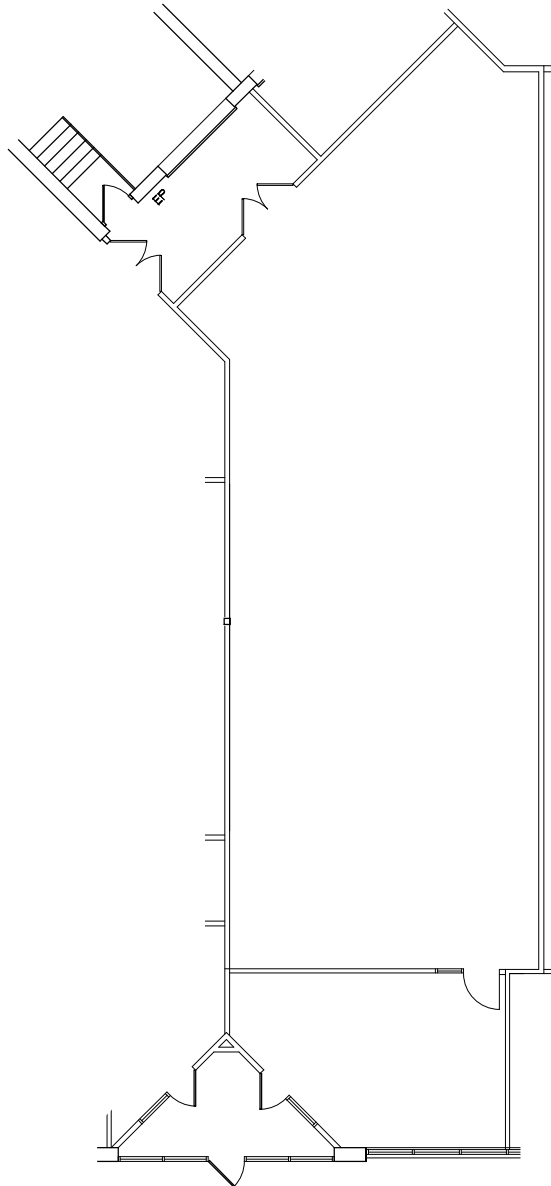
TECH  
BLDG M/E  
TOTAL

2,340 S.F.  
14 S.F.  
2,354 S.F.



## KEY PLAN

NOT TO SCALE



## FLOOR PLAN - SUITE 120

14.01447.00/ TTL

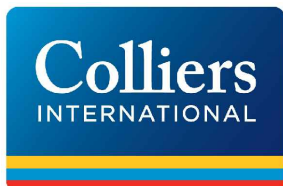
\*FILE COPY, HAS NOT BEEN FIELD VERIFIED.

07-21-17

SCALE: 1/16"=1'-0"



LEASED & MANAGED BY:



**PARKERS LAKE POINTE I**  
14405 21ST AVENUE NORTH  
PLYMOUTH, MINNESOTA

**NELSON**

Nelson Upper Midwest Operating Company, LLC  
a licensed affiliate

1201 Marquette Avenue South - Suite 200  
Minneapolis, MN 55403  
Phone: (612) 822-1211  
Fax: (612) 822-1006