



For Lease

Lease Rate:
Subject to Offer

Estimated Opex:
\$5.00
PSF NNN

1670 Miller Park Way West Milwaukee, WI 53215

High-Image Flex Space Available

- Great central location with easy access to I-94/Stadium Interchange
- 41,800 VPD on Miller Park Way
- Located on major retail corridor

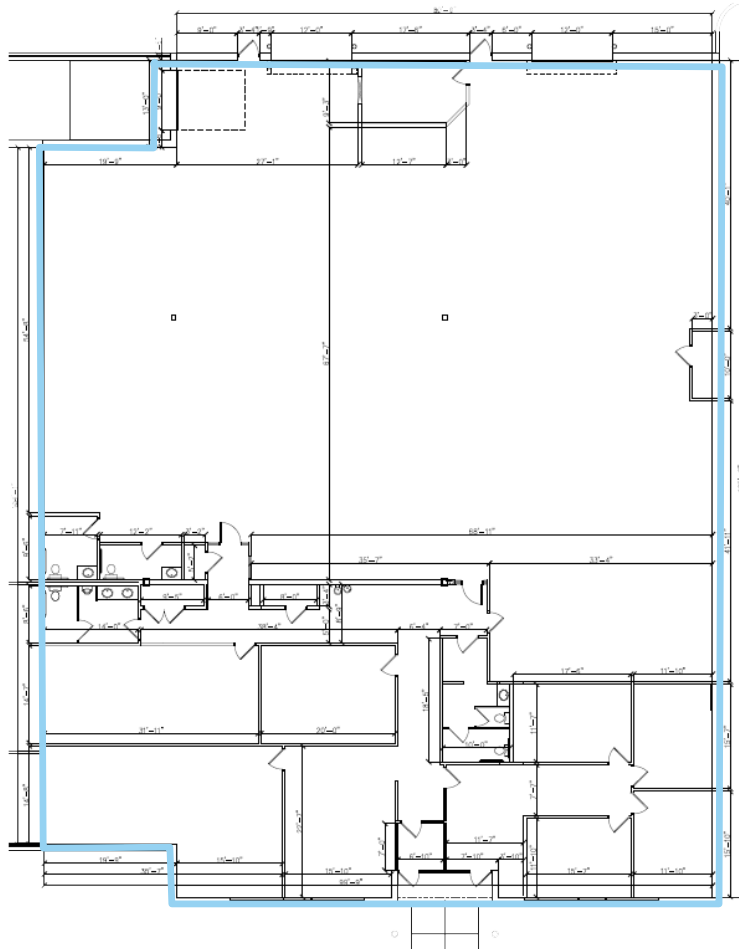
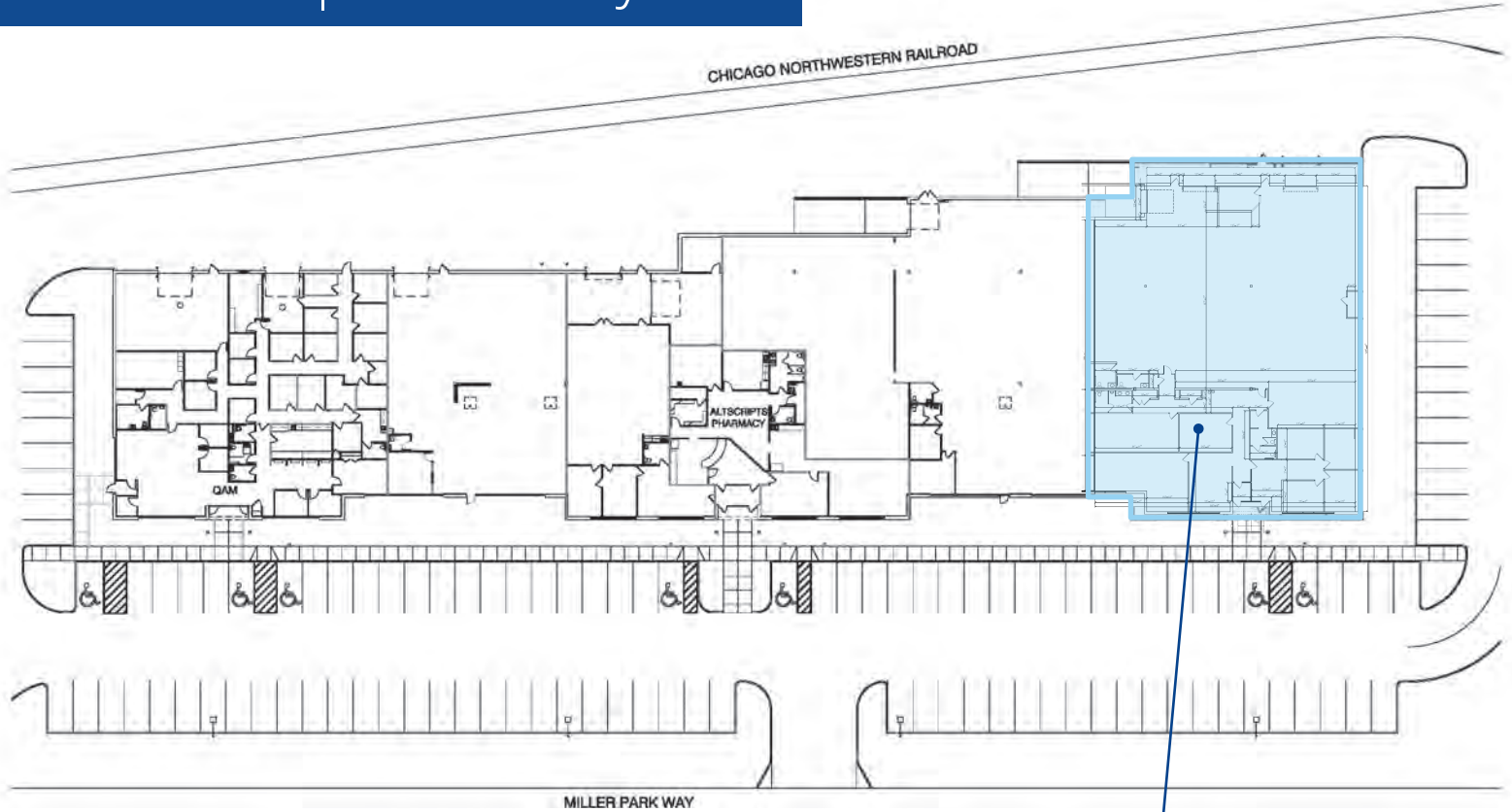
Building Size	+/- 43,963 SF
Availability	+/- 12,430 SF
Loading	2 Drive-Ins 1 Dock Door
Sprinkler	ESFR
Parking	TBD
Acres	3.30 Acres
Year Built	2002

Contact us:

Kyle Fink, CCIM
Senior Real Estate Advisor
+1 414 982 6576 (direct)
+1 414 426 6251 (mobile)
kyle.fink@colliers.com

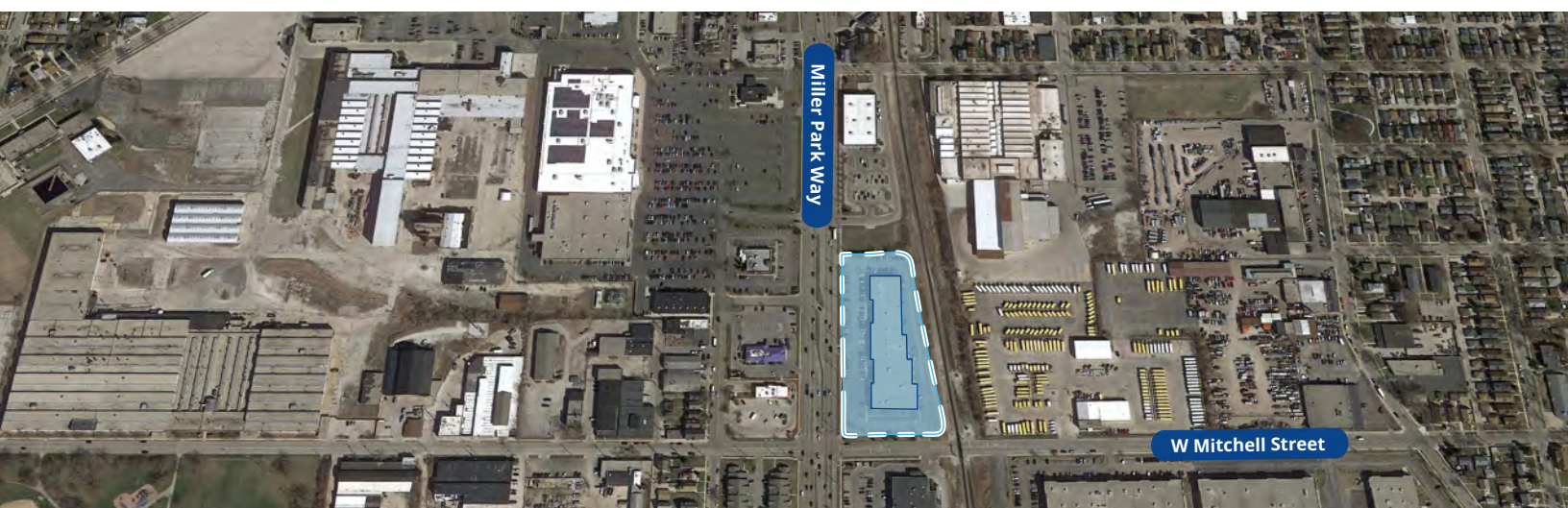
Steve Sewart
Executive Vice President
+1 414 278 6823 (direct)
+1 414 732 3490 (mobile)
steve.sewart@colliers.com

Floor Plan | Availability



Suite 1670
Available Space | +/- 12,430 SF
Loading | 2 Drive-Ins & 1 Dock Door

Location



For Lease
Stadium Business Center | Milwaukee



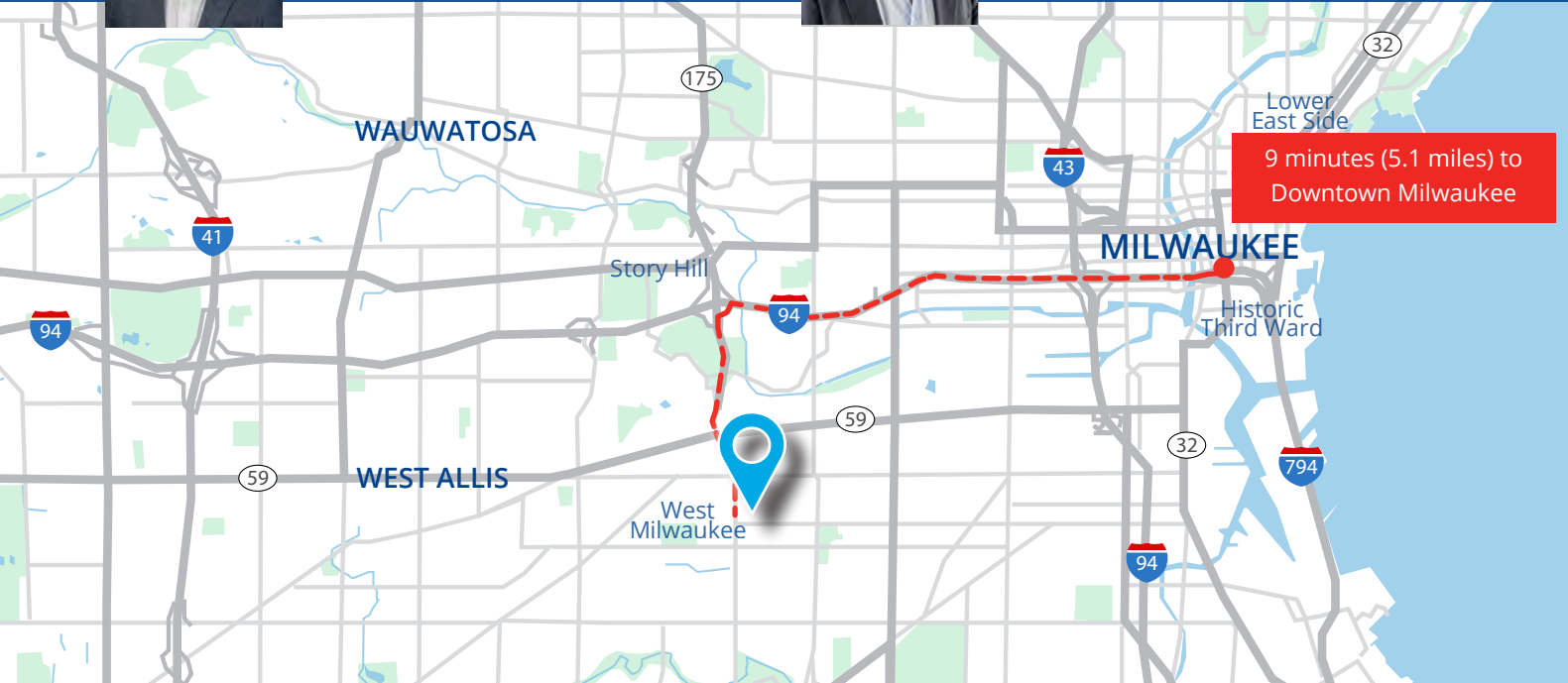
Contact



Kyle Fink, CCIM
Senior Real Estate Advisor
+1 414 982 6576 (direct)
+1 414 426 6251 (mobile)
kyle.fink@colliers.com



Steve Sewart
Executive Vice President
+1 414 278 6823 (direct)
+1 414 732 3490 (mobile)
steve.sewart@colliers.com



833 E Michigan Street, Suite 500
Milwaukee, WI 53202
P: +1 414 276 9500
F: +1 414 276 9501

This document has been prepared by Colliers International for advertising and general information only. Colliers International makes no guarantees, representations or warranties of any kind, expressed or implied, regarding the information including, but not limited to, warranties of content, accuracy and reliability. Any interested party should undertake their own inquiries as to the accuracy of the information. Colliers International excludes unequivocally all inferred or implied terms, conditions and warranties arising out of this document and excludes all liability for loss and damages arising there from. This publication is the copyrighted property of Colliers International and/or its licensor(s). ©2023. All rights reserved.

Non-Residential Customers

Wisconsin law requires all real estate licensees to give the following information about brokerage services to prospective customers.

Prior to negotiating on your behalf the Brokerage firm, or an agent associated with the firm, must provide you the following disclosure statement:

Broker Disclosure to Customers

You are a customer of the broker. The broker is either an agent of another party in the transaction or a subagent of another broker who is the agent of another party in the transaction. The broker, or a salesperson acting on behalf of the broker, may provide brokerage services to you, the broker owes you, the customer, the following duties:

- The duty to provide brokerage services to you fairly and honestly.
- The duty to exercise reasonable skill and care in providing brokerage services to you.
-The duty to provide you with accurate information about market conditions with a reasonable time if you request it, unless prohibited by law.
- The duty to protect your confidentiality. Unless the law requires it, the broker will not disclose your confidential information or the confidential information to other parties.
- The duty to safeguard trust funds and other property the broker holds.
- The duty, when negotiating, to present contract proposals in an objective and unbiased manner and disclose the advantages and disadvantages of the proposals.

Please review this information carefully. A broker or salesperson can answer your questions about brokerage services, but if you need legal advice, tax advice or a professional home inspection contact an attorney, tax advisor, or home inspector. This disclosure is required by section 452.135 of the Wisconsin statutes and is for information only. It is a plain-language summary of a broker's duties to a customer under section 452.133 (1) of the Wisconsin statutes.

Confidentiality Notice to Customers

Broker will keep confidential any information given to broker in confidence, or any information obtained by broker that he or she knows a reasonable person would want to be kept confidential. Unless the information must be disclosed by law or you authorize the broker to disclose particular information. A broker shall continue to keep the information confidential after broker is no longer providing brokerage services to you.

The following information is required to be disclosed by law:

1. Material adverse facts, as defined in section 452.01 (5g) of the Wisconsin Statutes.
2. Any facts known by the broker that contradict any information included in a written inspection report on the property or real estate that is the subject of the transaction.

No representation is made as to the legal validity of any provision or the adequacy of any provision in any specific transaction.

Copyright 2007 by Wisconsin REALTORS Association.
Drafted by Attorney Debra Peterson Conrad.

To ensure that the broker is aware of what specific information you consider confidential, you may list that information below. At a later time, you may also provide the broker with other information you consider to be confidential.

Confidential information: _____

Non-Confidential information: (The following information may be disclosed by Broker): _____

(Insert information you authorize the broker to disclose such as financial qualification information.)

Consent to Telephone Solicitation

I/We agree that the broker and any affiliated settlement service providers (for example, a mortgage company or title company) may call our/my home or cell phone numbers regarding issues, goods and services related to the real estate transaction until I/we withdraw this consent in writing.

List Home/Cell Numbers: _____

Sex Offender Registry

Notice: You may obtain information about the sex offender registry and persons registered with the registry by contacting the Wisconsin Department of Corrections on the Internet at <http://offender.doc.state.wi.us/public/>

Definition of Material Adverse Facts

A "material adverse fact" is defined in Wis. Stat 452.01 (5g) as an adverse fact that a party indicates is of such significance, or that is generally recognized by a competent licensee as being of such significance to a reasonable party, that it affects or would affect the party's decision to enter into a contract or agreement concerning a transaction or affects or would affect the party's decision to enter into a contract or agreement concerning a transaction or affects or would affect the party's decision about the terms of such a contract or agreement. An "adverse" fact is defined in Wis. Stat. 452.01 (1e) as a condition or occurrence that a competent licensee generally recognizes will significantly and adversely affect the value of the property, significantly reduce the structural integrity of improvements to real estate, or present a significant health risk to occupants of the property; or information that indicates that a party to a transaction is not able to or does not intend to meet his or her obligations under a contract or agreement made concerning the transaction.

