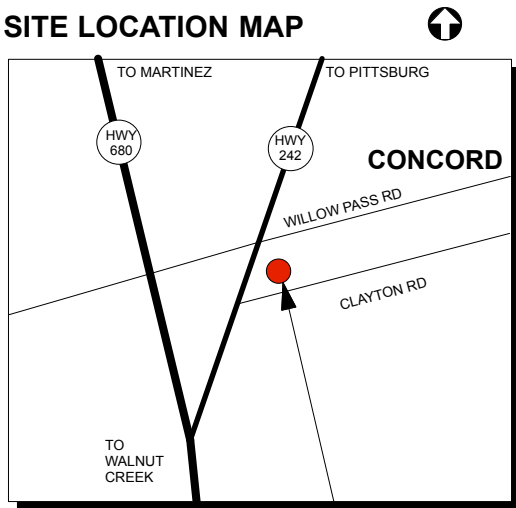
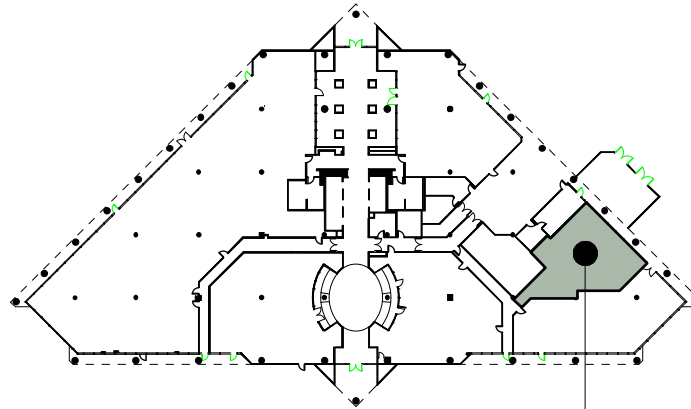


## SITE LOCATION MAP

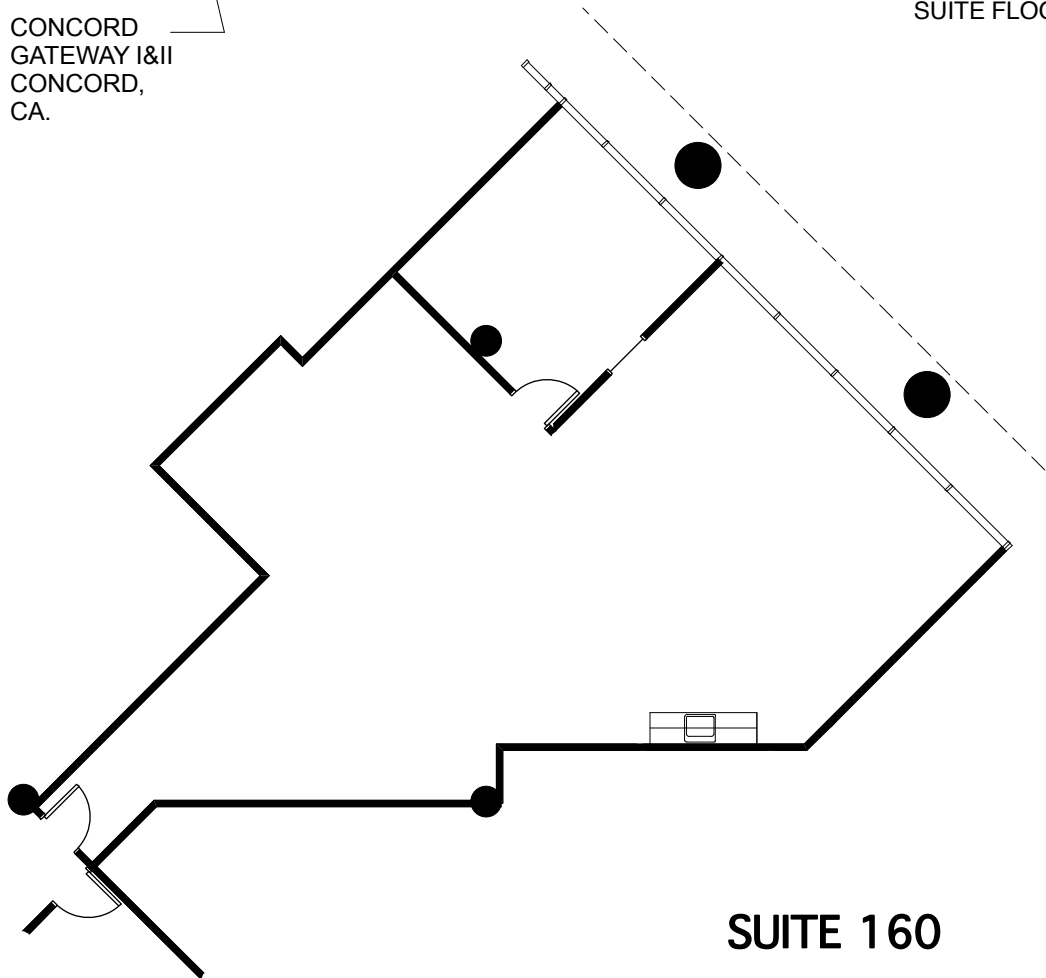


CONCORD  
GATEWAY I&II  
CONCORD,  
CA.

## FIRST FLOOR - 1850 BLDG - KEY PLAN



SUITE FLOOR LOCATION



SUITE 160

**Colliers**  
INTERNATIONAL

Colliers International  
1850 Mount Diablo Boulevard, Suite 200  
Walnut Creek, CA 94596 | United States  
www.colliers.com

LEASING AGENT

**Scott Ellis**  
(925) 279-5575

scott.ellis@colliers.com

**Matt Hurd**  
(925) 279-5567

matt.hurd@colliers.com

**Eric Erickson**  
(925) 279-5580

eric.erickson@colliers.com

## Concord Gateway I

1850 Gateway Blvd.  
Concord, CA 94520  
First Floor

Owned and Managed by

**Sierra Pacific  
Properties, Inc.**

Approximate Area Calculations  
Subject To Verification:

1,880 rsf

As-built Plan To Be Verified

This information displayed while not guaranteed has been secured by sources we believe to be reliable. This information is subject to errors & omissions. Any tenant should conduct their own investigation.

Plan Revision - 2-5-18