

For Lease

Restaurant / Pub & Café Space
1717 SW Park Ave, Portland, OR

Motivated Landlord | New Demised Floorplan

2 Patios
around
back

SUITE D

SUITE C

Available Retail Space

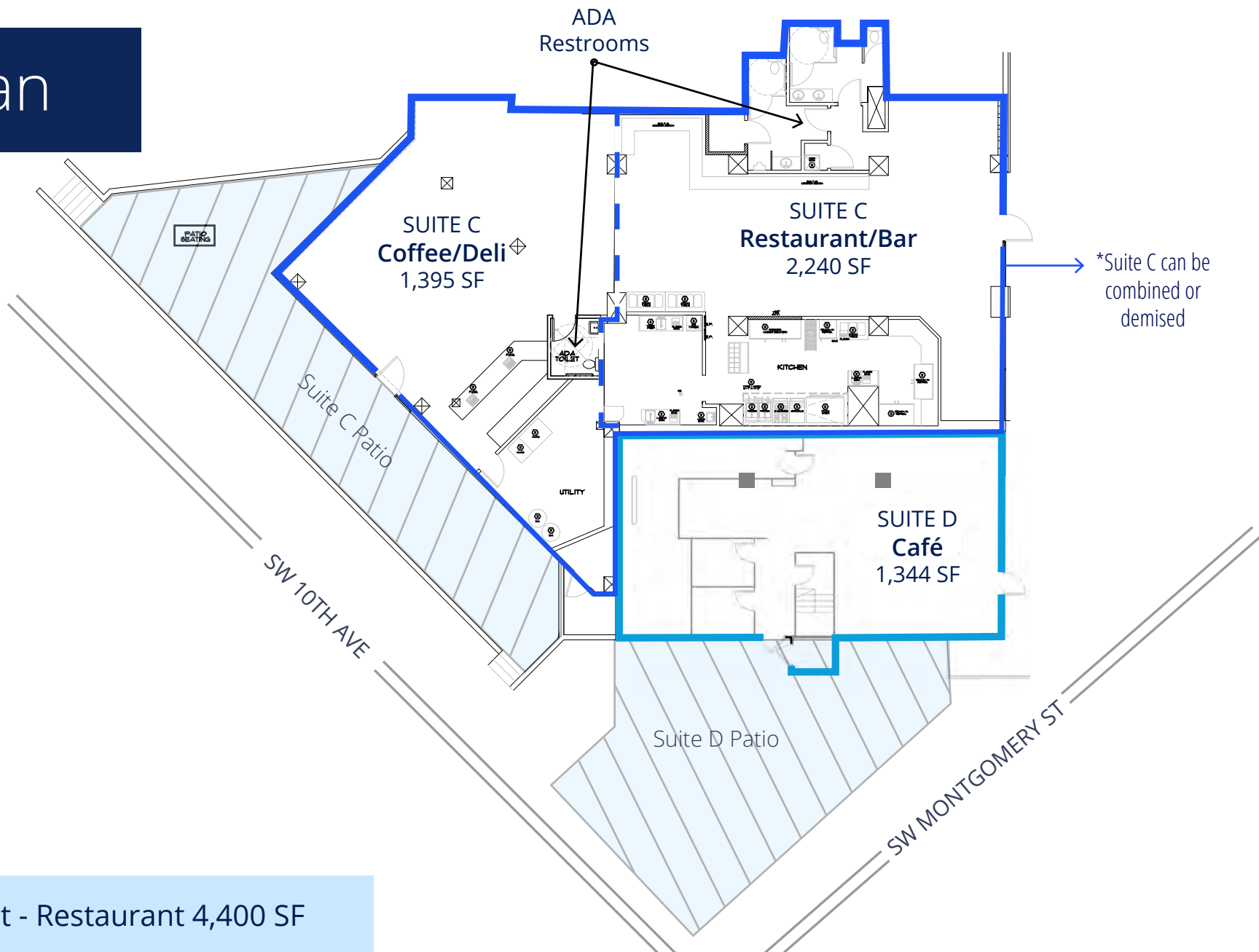
Suite C	Restaurant + Patio	4,400 SF (can be demised)
Suite D	Café + Patio	1,310 SF

Colliers

Tamer Riad
+1 503 407 4328
tamer.riad@colliers.com

2nd Generation Restaurant & Bar Opportunity
2nd Generation Café Opportunity
Call for pricing

Site Plan



Current Buildout - Restaurant 4,400 SF

Tamer Riad
+1 503 407 4328
tamer.riad@colliers.com



Suite C

Southwest Portland presents eclectic neighborhoods, bustling streets, and proximity to parks and landmarks. The Portland State campus offers a dynamic backdrop for culinary innovation and gastronomic exploration. District to the charming corridors of Multnomah Village, this area beckons with a mix of local charm and urban sophistication, providing ample potential for a restaurant or pub to carve out its niche.

A great opportunity awaits at this fully equipped 2nd Generation restaurant space for a terrific culinary & drinking concept. Buildout includes all the infrastructure required to get open asap. A rare opportunity for a turnkey space in this area.

SUITE C HIGHLIGHTS:

- 4,400 SF
- Outdoor patio
- ADA restrooms
- Separate dining and bar areas
- Grease trap
- 12' type 1 hood
- FF&E available
- Plug & play restaurant space



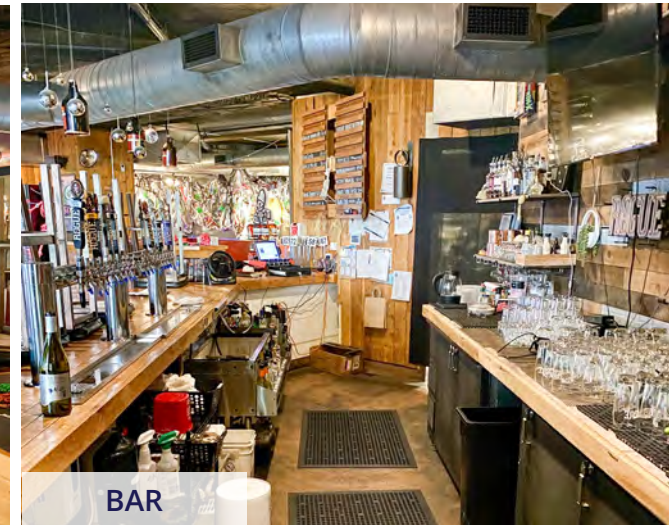
DINING & BAR



DINING & BAR



DINING & BAR



BAR



KITCHEN



PREP AREA

Suite D

SUITE D HIGHLIGHTS:

- 1,310 SF
- Current sushi restaurant
- Prep space
- Storage
- Grease trap
- Café ready



ENTRY



DINING



KITCHEN



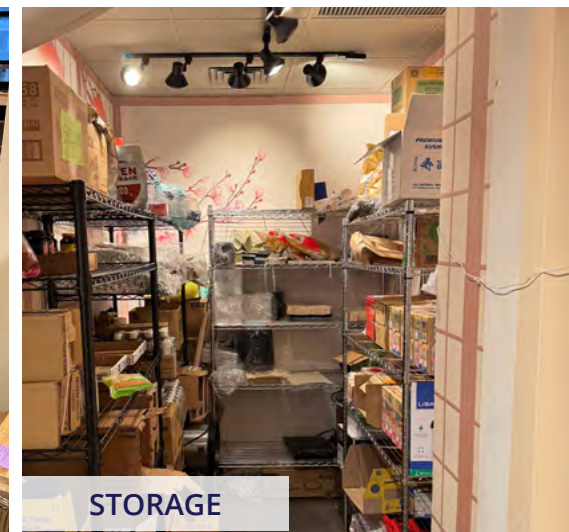
PREP AREA



Patio Area



BACK COUNTER



STORAGE

Amenities Map



POPULATION	
2025 Population	36,071
Population Change (2025 - 2030)	4.6%
CONSUMER EXPENDITURES	
Food Away from Home	\$92,955,334
Entertainment/Recreation	\$81,997,354
*within 1 mile	

Colliers
 851 SW 6th Avenue, Suite 1600
 Portland, OR 97204
 +1 503 223 3123

Tamer Riad
 +1 503 407 4328
tamer.riad@colliers.com



1717 SW Park Ave

← **Portland State University**
 20,470 students

This document has been prepared by Colliers for advertising and general information only. Colliers makes no guarantees, representations or warranties of any kind, expressed or implied, regarding the information including, but not limited to, warranties of content, accuracy and reliability. Any interested party should undertake their own inquiries as to the accuracy of the information. Colliers excludes unequivocally all inferred or implied terms, conditions and warranties arising out of this document and excludes all liability for loss and damages arising there from. This publication is the copyrighted property of Colliers and/or its licensor(s). Real estate officer license corporation identification number 01908588. ©2025. All rights reserved.