

FOR LEASE > OFFICE

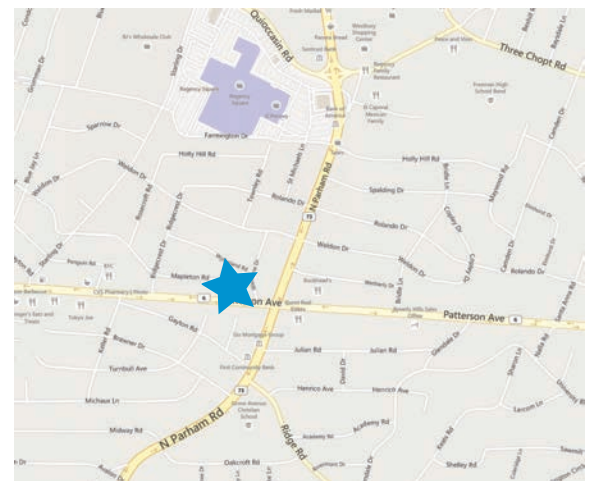
# 1100 Welborne Drive

HENRICO, VIRGINIA 23229



## Property Features

- > ±1,600 SF available on the second floor
- > Interior and exterior renovations are in process (2nd floor restroom renovations completed)
- > Exterior cladding, paint and parking lot/exterior lighting is planned
- > Building and monument signage available
- > Located near corner of Parham Road and Patterson Avenue
- > Excellent visibility
- > 4.02/1,000 SF parking ratio
- > Many amenities and services nearby
- > Aggressive lease terms - call for details

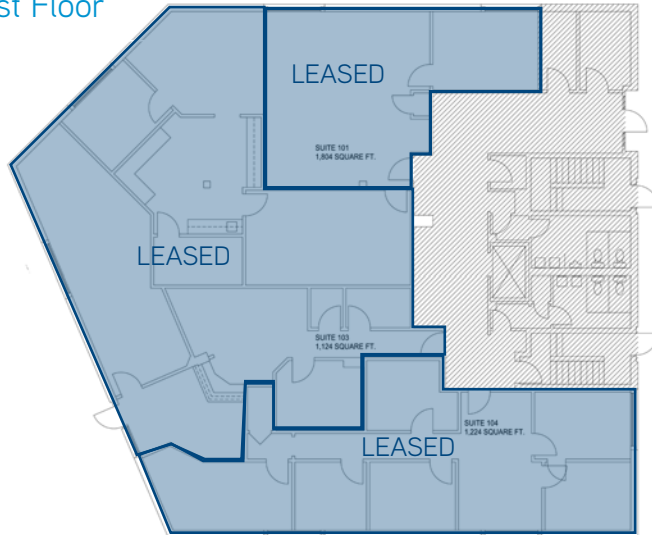


AGENT: CHRIS WALLACE  
804 591 2424  
RICHMOND, VA  
[chris.wallace@colliers.com](mailto:chris.wallace@colliers.com)

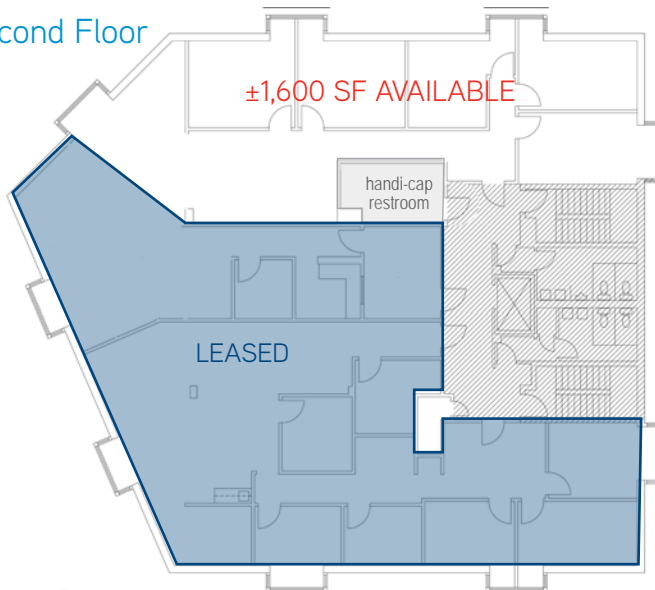
COLLIERS INTERNATIONAL  
6606 W. Broad Street, Suite 400  
Richmond, VA 23230  
[www.colliers.com/richmond](http://www.colliers.com/richmond)

# For Lease > 1100 Welborne Drive > Current Floor Plans

## First Floor



## Second Floor



## Third Floor

