

NORTH MEADOWS BUSINESS PARK BAKERSFIELD, CALIFORNIA



NEW CONSTRUCTION NOW AVAILABLE



19204 QUINN ROAD - FOR LEASE

Warehouse, Distribution and Yard



TOTAL BUILDING:

45,200 SF
Multiple divisible options
available

OFFICE: 5%
Build-to-Suit

LOT SIZE: 2.77 ACRES

OCCUPANCY:
Available Now

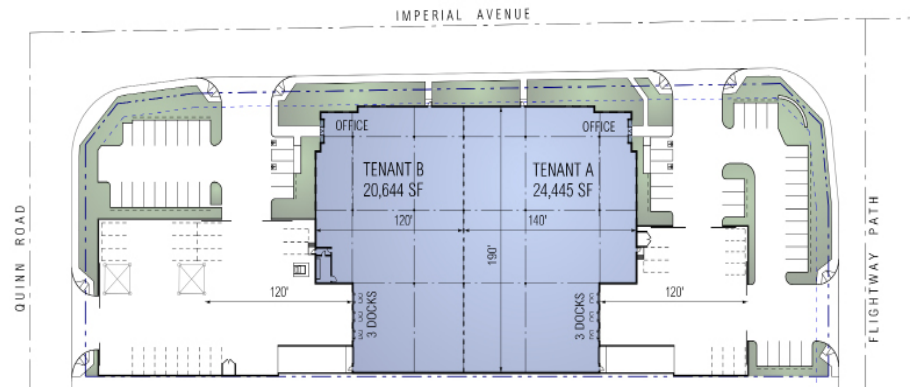
FEATURES

20' clear height (min)
50' x 52' column spacing
(60' speed bays)
2 roll-up doors (12' x 14')
6 dock doors (9' x 10')
120' concrete truck court
76 parking spaces
LED warehouse lighting
1200A, 480-277V

High-quality tilt-up
construction

UTILITIES

Pacific Gas & Electric
The Gas Company
North of the River
Sanitation District



LIGHT INDUSTRIAL, HEAVY LIFTING

160-acre master-planned
business park

2.7–16 acre finished
lots available

Build-to-suit facilities for sale
or lease

High-quality concrete
tilt-up construction

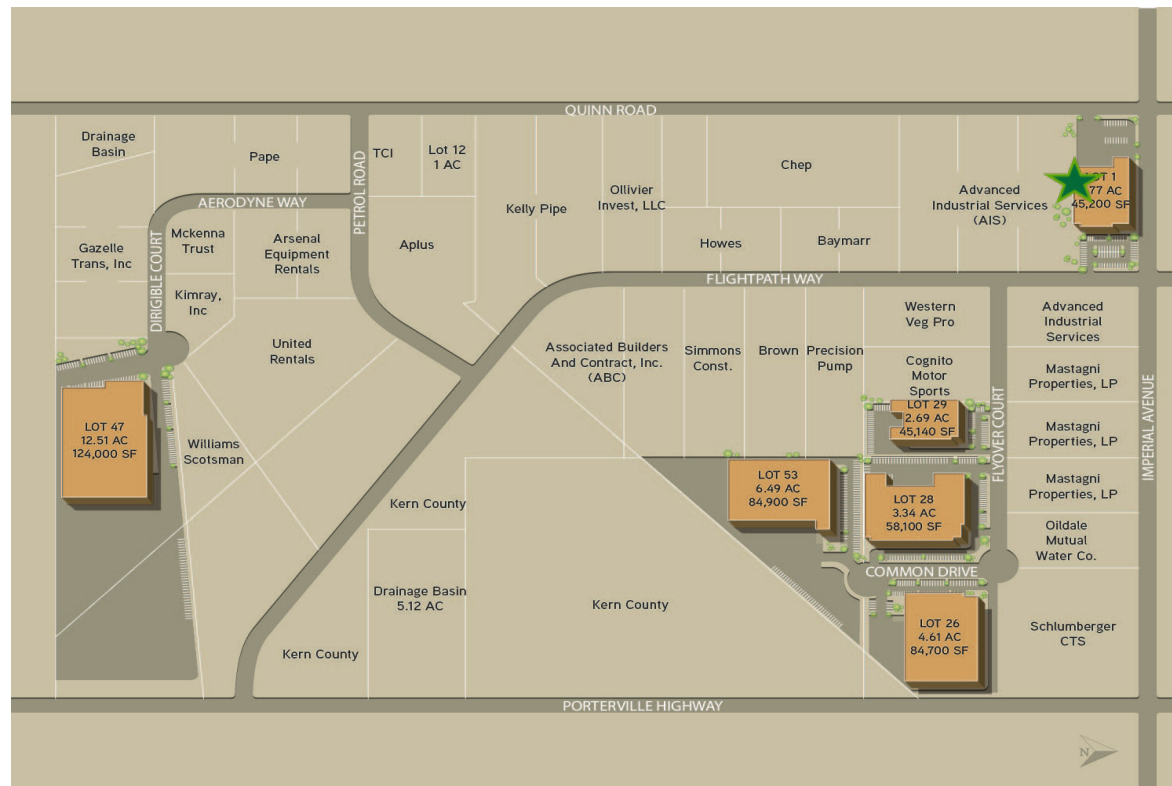
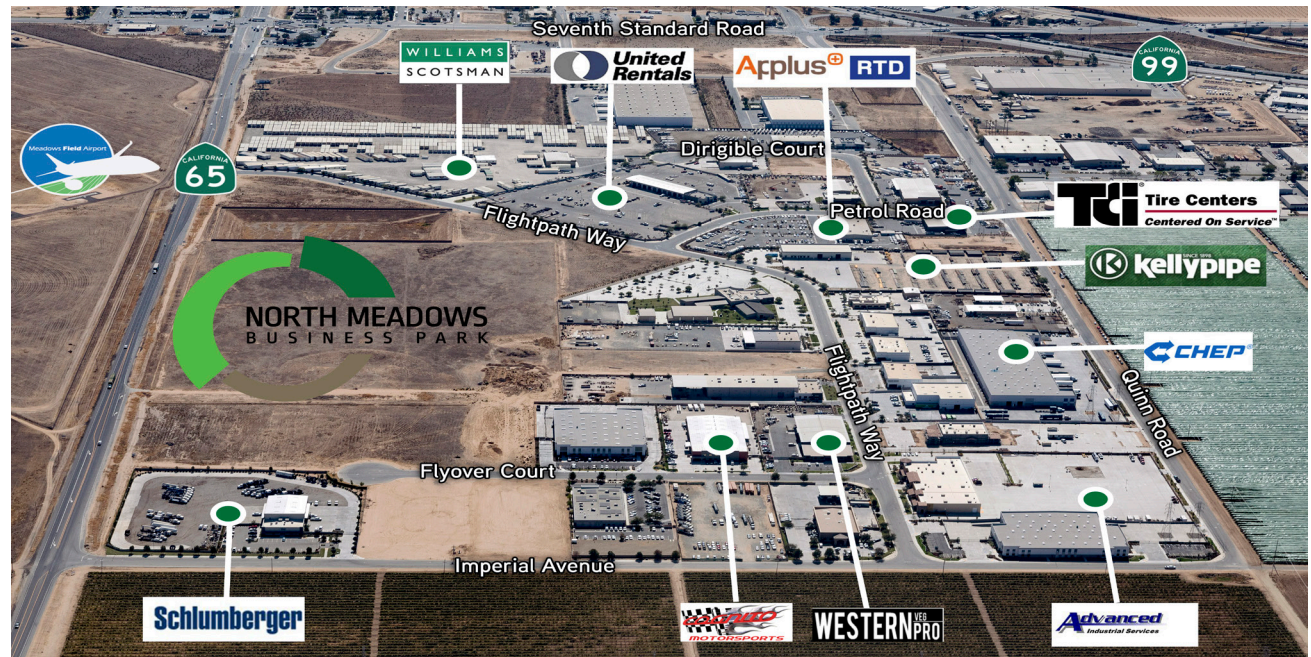
Direct Access to Hwy-99,
I-5 and SR-65

Proximity to local businesses,
FedEx and UPS Ground Hubs

Located at northern tip
of Bakersfield's Meadows
Field Airport

*Another fine quality
development by:*

Wonderful
real estate development™



STEPHEN HAUPT, SIOR
Senior Vice President &
Principal
Central California
Lic. #00838505
661.631.3812
stephen.haupt@colliers.com

WESLEY MCDONALD
Senior Vice President &
Principal
Central California
Lic. #01511739
661.631.3828
wesley.mcdonald@colliers.com

OSCAR BALTAZAR
Senior Vice President
Central California
Lic. #01263421
661.631.3819
oscar.baltazar@colliers.com

HWY-65 AT FLIGHTPATH WAY, BAKERSFIELD, CA 93308