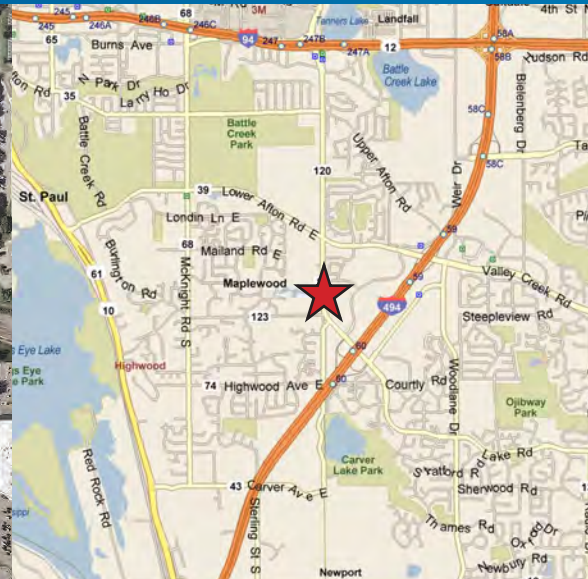
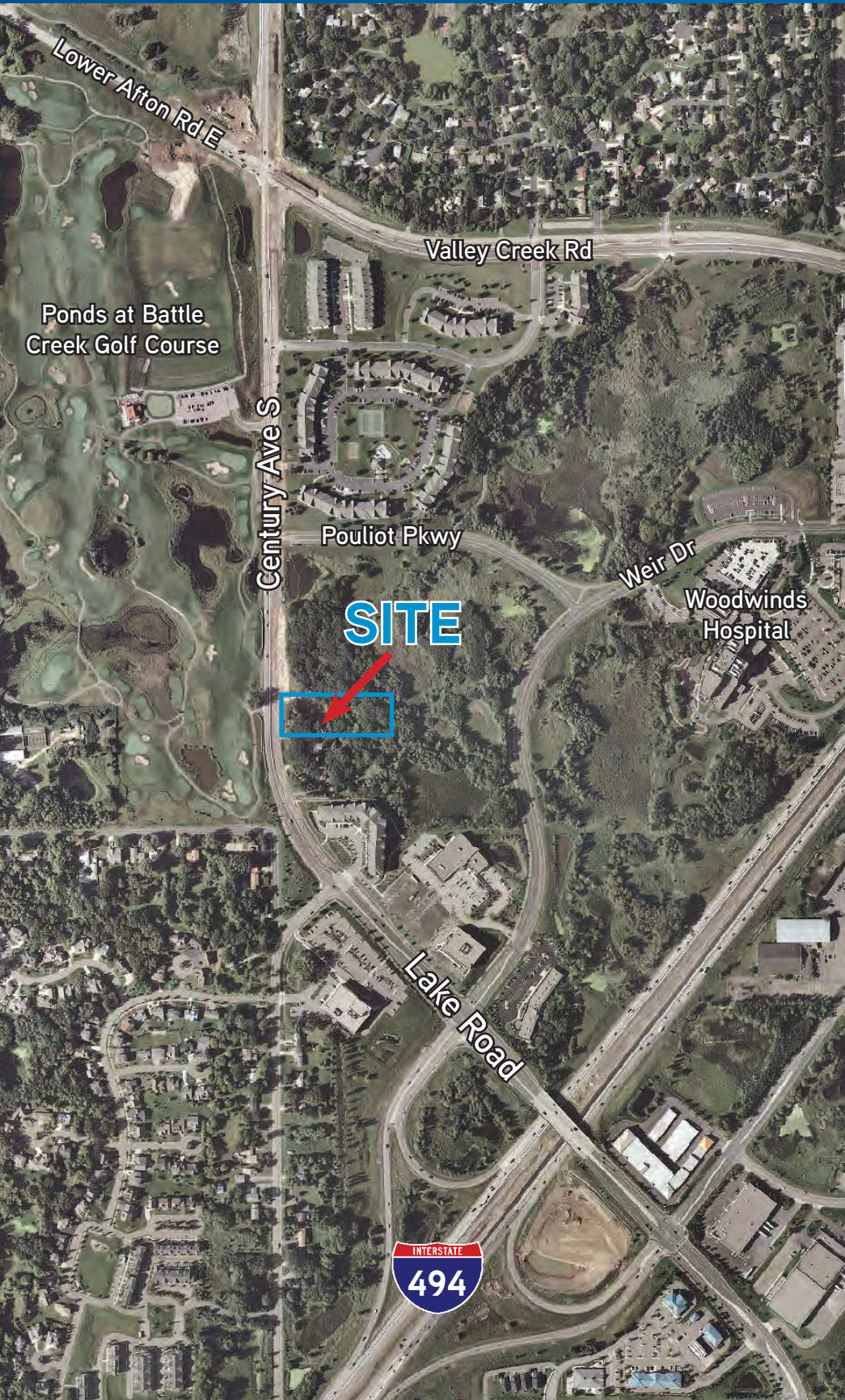


FOR SALE > OFFICE/MEDICAL LAND

1901 Century Ave S

WOODBURY, MN 55125



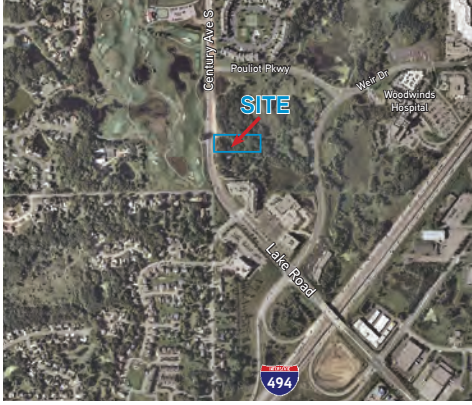
Site Features

- > Offering price \$595,000
- > 81,000 square feet
- > Zoned Office/Medical
- > Easy access from I-494
- > Great Office/Medical site blocks from Woodwinds Hospital
- > Beautiful wooded setting
- > Able to accommodate 25,000 s.f. building
- > Can combine with adjacent parcel for over 5 acres

Contact Us

KEVIN O'NEILL, SIOR
952 897 7724
MINNEAPOLIS, MN
kevin.oneill@colliers.com

COLLIERS INTERNATIONAL
4350 Baker Road, Suite 400
Minnetonka, MN 55343
www.colliers.com



Site Information

Address: 1901 Century Ave

City / State: Woodbury, MN

Land Size: 81,000 square feet

Asking Price: \$595,000 or \$7.34 per square foot

Zoning: Medical / Office

Dimensions: Approximately 180' x 500'

Site Features:

- > Able to accommodate 25,000 s.f. building
- > Great access via I-494
- > Desirable location
- > Blocks from Woodwinds Hospital
- > Can combine with adjacent parcels to accommodate 5 acres
- > Paved city street access