

CROWN CENTER OFFICE SPACE FOR LEASE

# 2301 MCGEE STREET

KANSAS CITY | MO

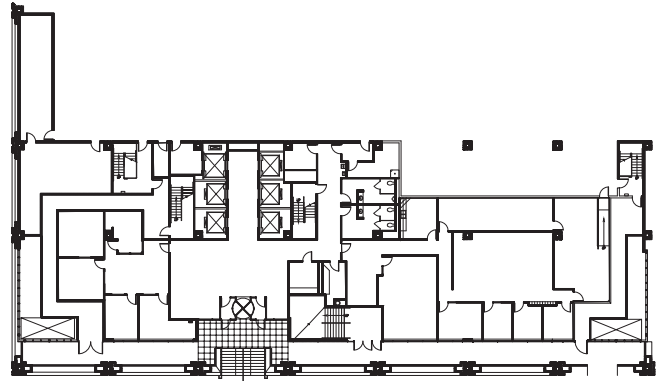


## CROWN CENTER

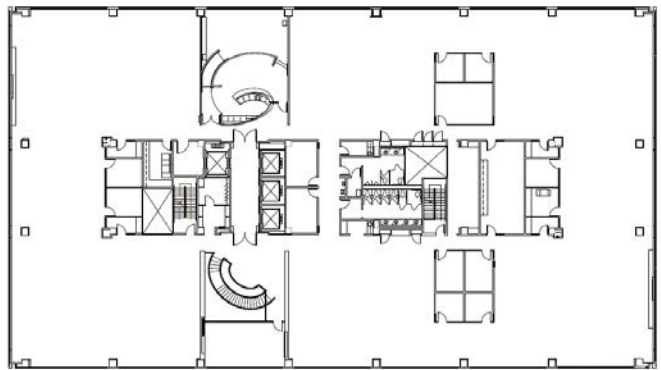
Spectacular architecture  
Beautiful landscaping and green space  
Countless services and amenities  
High-level security and surveillance  
High-quality management  
Attached and secure parking garages  
Conference and meeting facilities  
Health and fitness center

# FLOOR PLANS

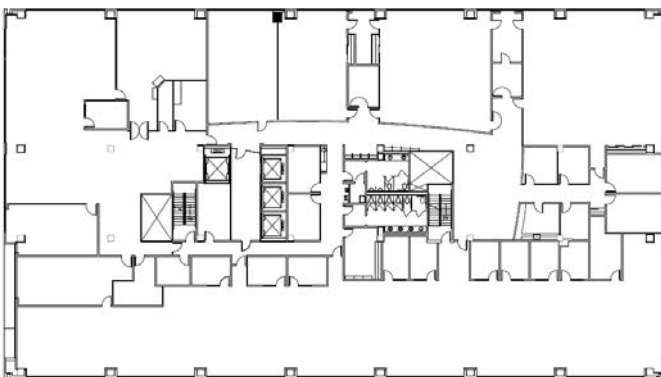
2301 McGee Street | Suite 100



2301 McGee Street | 4th floor



2301 McGee Street | 6th floor





# Highlights:

8-story building

Attached to Sheraton Kansas City Hotel at Crown Center

4/1000 secured covered parking

Large floor plates

10 foot ceilings

Responsive, on-site building management

Walking distance to shopping, dining, events, and attractions

\$22.75 RSF full-service rental rate

# Amenities:

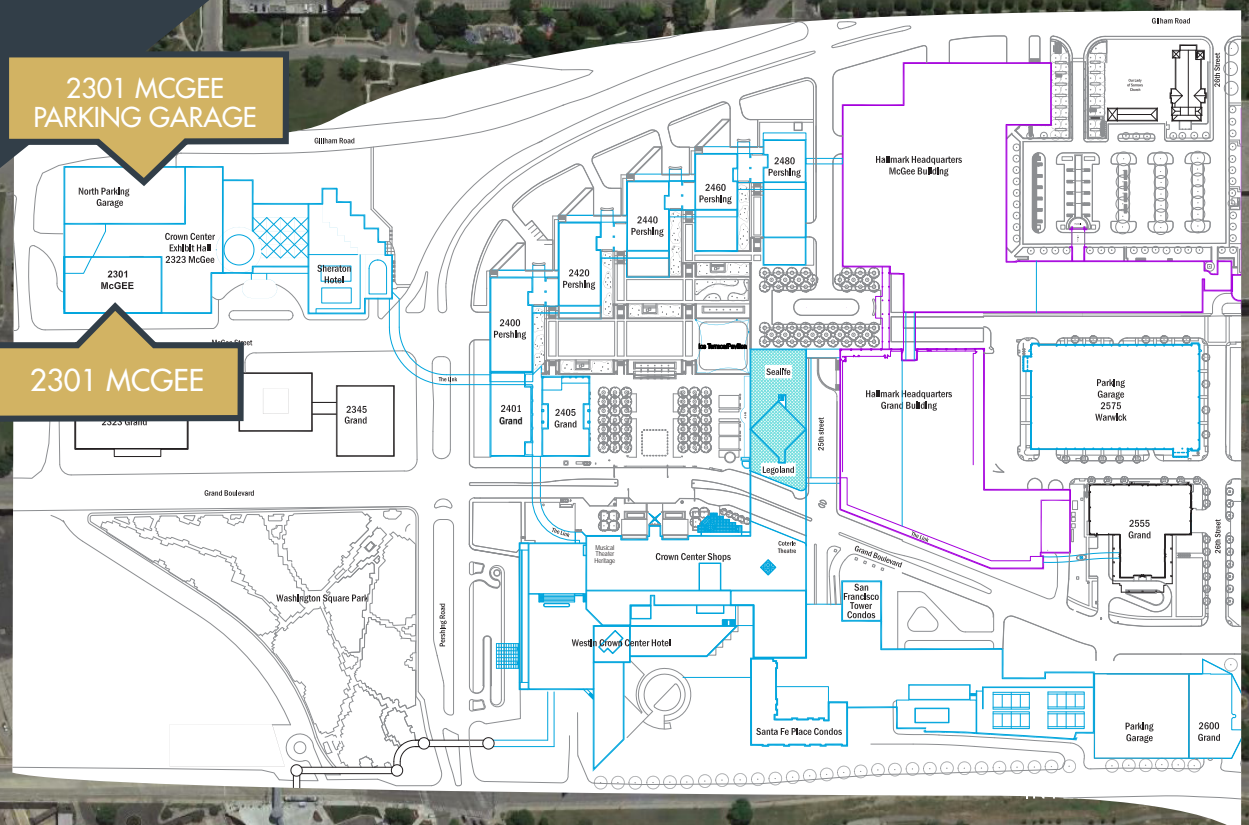
Fitness Center access at Pershing Building

Coffee Shop access at Pershing Building

Rooftop Deck access at Pershing Building

Crown Center Shops and Restaurants

SITE PLAN



CROWN CENTER OFFICE SPACE FOR LEASE

# 2301 MCGEE STREET

KANSAS CITY | MO



## CONTACT

### **Evan Warwick**

Senior Vice President | Kansas City  
+1 816 556 1137  
[evan.warwick@colliers.com](mailto:evan.warwick@colliers.com)

### **Ross Simpson**

Senior Vice President | Kansas City  
+1 816 556 1157  
[ross.simpson@colliers.com](mailto:ross.simpson@colliers.com)

**Colliers**  
INTERNATIONAL