

RETAIL SPACE FOR LEASE >

Summit Oaks Square

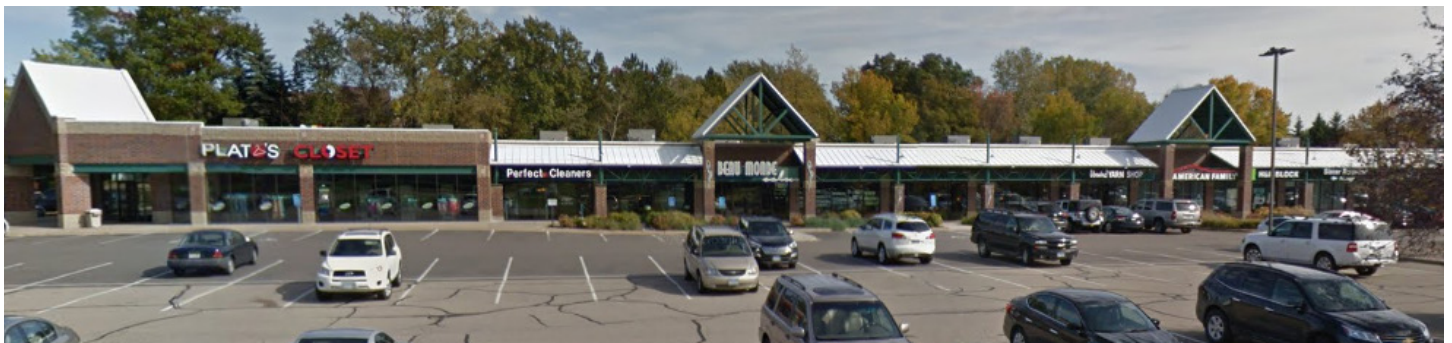
14601 County Road 11 | Burnsville, MN 55337



Accelerating success.



BUILDING PHOTOS



CONTACT US

Molly Townsend
952 897 7825
molly.townsend@colliers.com

SUMMIT OAKS SQUARE > FOR LEASE

SITE INFORMATION:

- > Location 14601 County Rd 11 | Burnsville, MN
- > Description Convenience/Strip Center
- > Year Built 1987
- > Building GLA 32,804 SF

AVAILABILITY:

- > For Lease Suite 14635 - 2,850 SF
Suite 14605 - 1,280 SF

- > CAM & Taxes \$3.51 PSF CAM
\$4.53 PSF Taxes
\$8.04 PSF Total

- > Asking Rates \$14.00 - \$16.00 PSF

DEMOGRAPHICS:

Radius	1 Mile	3 Mile	5 Mile
Population	10,262	86,595	183,539
Median HH Income	\$79,390	\$77,058	\$82,581
Average HH Income	\$101,950	\$97,687	\$104,217

Source: ESRI 2017, Estimates

TRAFFIC COUNTS:

- > County Rd 42: 28,500 vpd
- > County Rd 11: 8,000 vpd

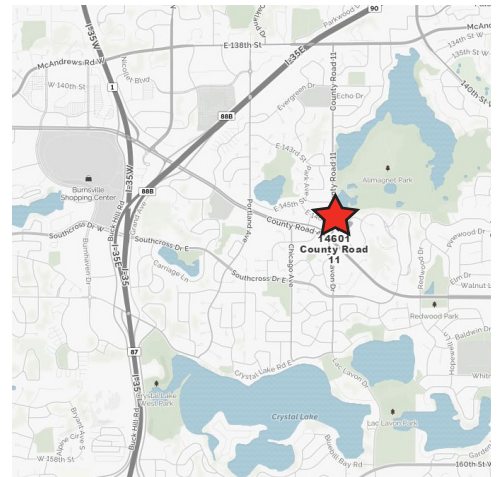
* Source: Minnesota Department of Transportation 2016 Study Averages are per day total cars

AREA TENANTS:

- > Davanni's
- > Fantastic Sam's
- > Caribou
- > Clothes Mentor
- > Subway
- > European Wax Center
- > Platos Closet
- > Great Harvest

COMMENTS:

Summit Oaks Square is located at the corner of County Road 42 & County Road 11. Co-tenants include Davanni's, Byblos, Platos Closet and Clothes Mentor neighboring retailers include Carribou, Great Harvest, Walgreens, SA and Subway. Great traffic count and high surrounding population density.



CONTACT US

Molly Townsend
952 897 7825
molly.townsend@colliers.com

