

# Office Sublease - Oldsmar



## DEMOGRAPHICS

	1 Mile	3 Miles	5 Miles
Total Population	9,882	56,962	170,683
Daytime Population	4,500	26,276	64,667
Avg. Household Income	\$79,106	\$88,060	\$86,369
Median Age	40.9	48.6	48.5

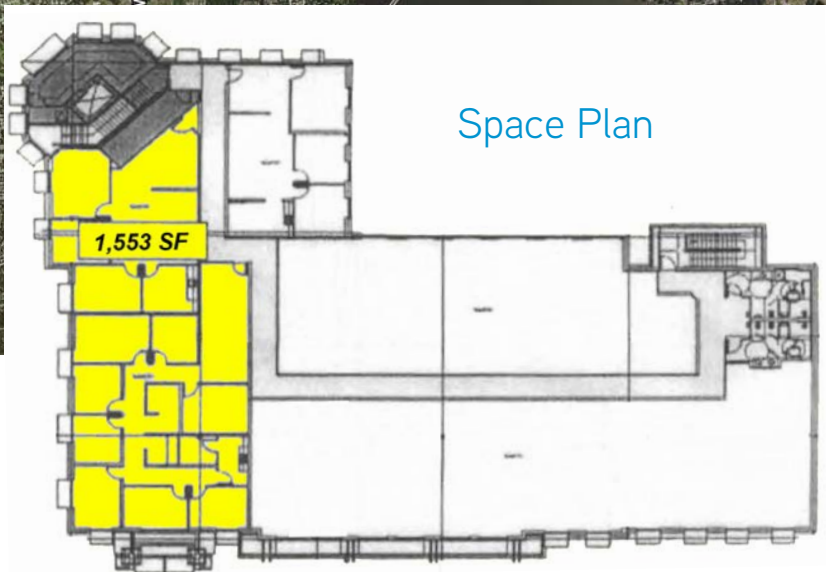
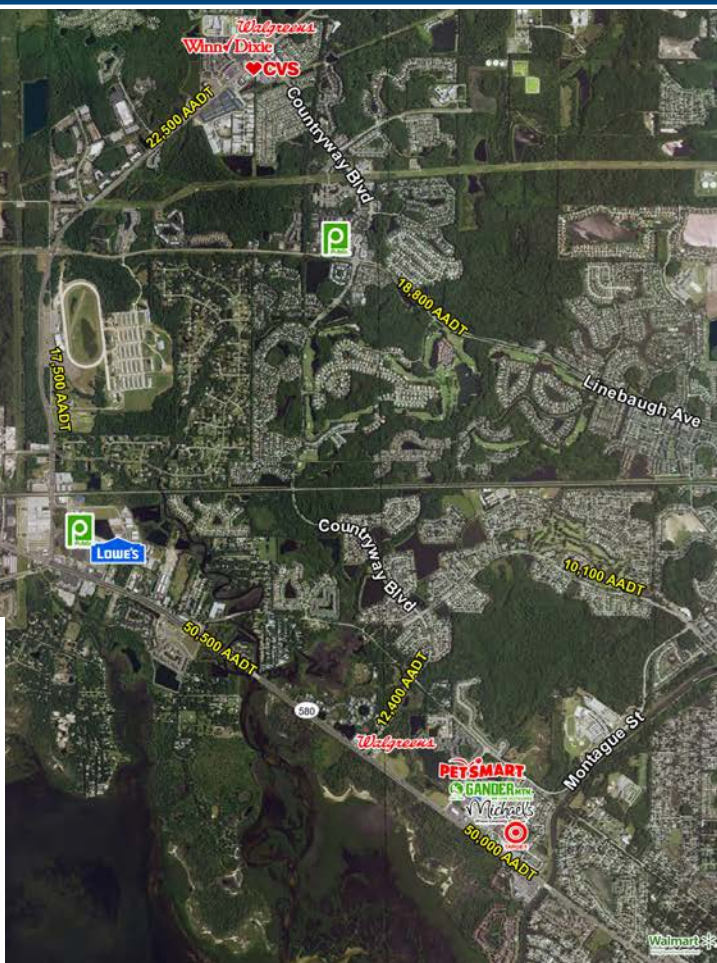
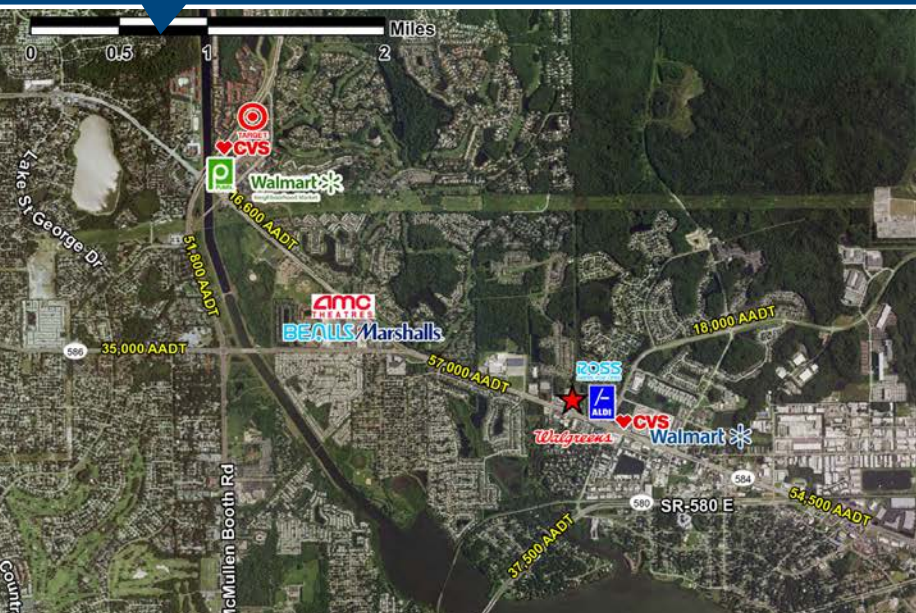
**3689 Tampa Road**  
**Oldsmar, FL 34677**

**STEPHANIE ADDIS**  
Director, Retail Services  
813 222 0484  
[stephanie.addis@colliers.com](mailto:stephanie.addis@colliers.com)

## Property Highlights

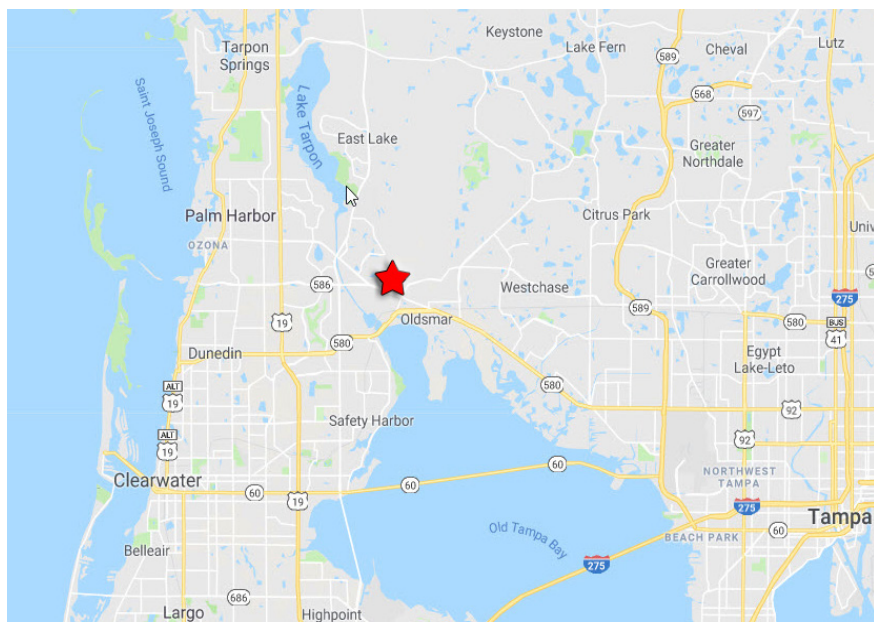
- » 1,553 SF second floor office space available
- » Dedicated, secure entrance at rear of building
- » Stair and elevator access
- » Turnkey buildout; move-in ready
- » Direct lease available
- » Adjacent to plenty of restaurants perfect for entertaining clients





Space Plan

Location Map



## Contact Us

**STEPHANIE ADDIS**

Director, Retail Services

813 222 0484

[stephanie.addis@colliers.com](mailto:stephanie.addis@colliers.com)

This document/email has been prepared by Colliers International for advertising and general information only. Colliers International makes no guarantees, representations or warranties of any kind, expressed or implied, regarding the information including, but not limited to, warranties of content, accuracy and reliability. Any interested party should undertake their own inquiries as to the accuracy of the information. Colliers International excludes unequivocally all inferred or implied terms, conditions and warranties arising out of this document and excludes all liability for loss and damages arising there from. This publication is the copyrighted property of Colliers International and /or its licensor(s). © 2016. All rights reserved. This communication is not intended to cause or induce breach of an existing listing agreement.



**COLLIERS INTERNATIONAL**  
4830 W. Kennedy Blvd., Suite 300  
Tampa, FL 33609  
813 221 2290  
[www.colliers.com](http://www.colliers.com)