

Walking distance to Lambeau Field and planned Titledown District!

PARK PLACE

OFFICE SPACE FOR LEASE

Park Place Office Park

1525-1551 Park Place - Ashwaubenon, WI

MARK PUCCI

DIRECT: 920 347 9425

MOBILE: 920 410 5094

mark.pucci@colliers.com

COLLIERS INTERNATIONAL
3051 Progress Way, Suite 211
Kaukauna, WI 54130
920 347 9500
www.colliers.com



FOR LEASE

1525-1551 Park Place - Ashwaubenon, WI

BUILDING INFORMATION

Number of Buildings: Four (4)

Rentable Building Area: 46,450 SF

Land Area: 5.422 Acres

Year Built: 1986-1998

Parking: 4.3/1,000 SF

Floors: 1 Floor
(Plus lower level in 1537)

Lease Rate: \$21.00/SF Gross (Main)
\$12.00/SF Gross (Lower)

HIGHLIGHTS

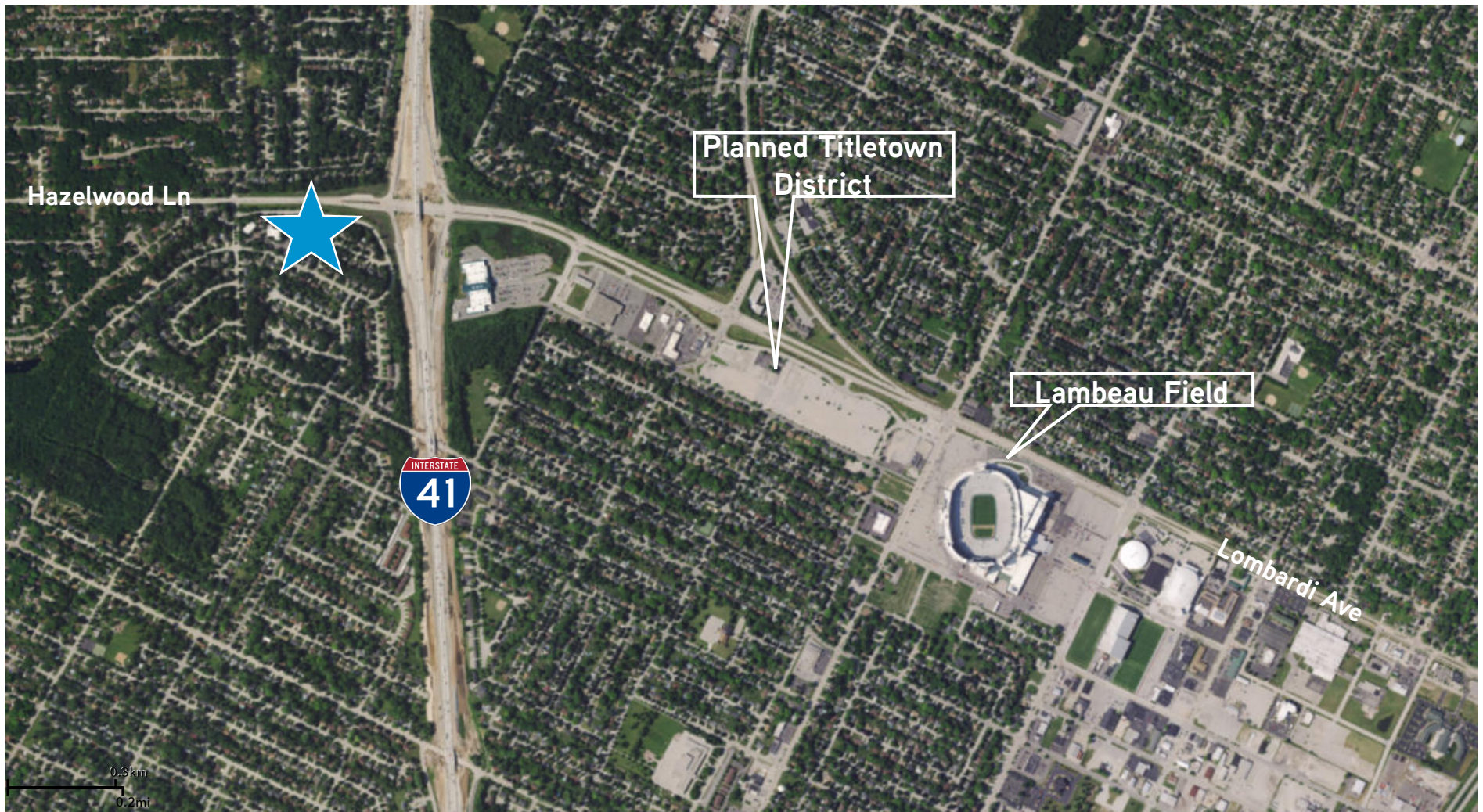
- Extremely close proximity to world-famous Lambeau Field and walking distance to planned \$120 million Titledown District
- Superb, convenient, and central location to metro Green Bay
- Excellent value-add opportunity through lease-up of move-in-ready vacancies
- Easy access to and from Interstate 41 (one block from interstate ramps)
- Long-standing tenant history, Anchor tenant has occupied space in Park Place Office Park since 1998
- Park Place has been well-maintained and professionally managed by ownership



FOR LEASE

1525-1551 Park Place - Ashwaubenon, WI

LOCATION



FOR LEASE

1525-1551 Park Place - Ashwaubenon, WI

PLANNED TITLETOWN DISTRICT

- Planned district located just three blocks directly east of Park Place Office Park
- Features a 10-acre public plaza, four-diamond luxury hotel, sports medicine clinic and restaurant/brewery
- Partnering with Kohler Co., Bellin Health and Hinterland
- \$65 Million already invested into the land acquisition and infrastructure costs
- Total development estimated to cost between \$120 and \$130 million
- Expected completion just prior to the 2017 football season

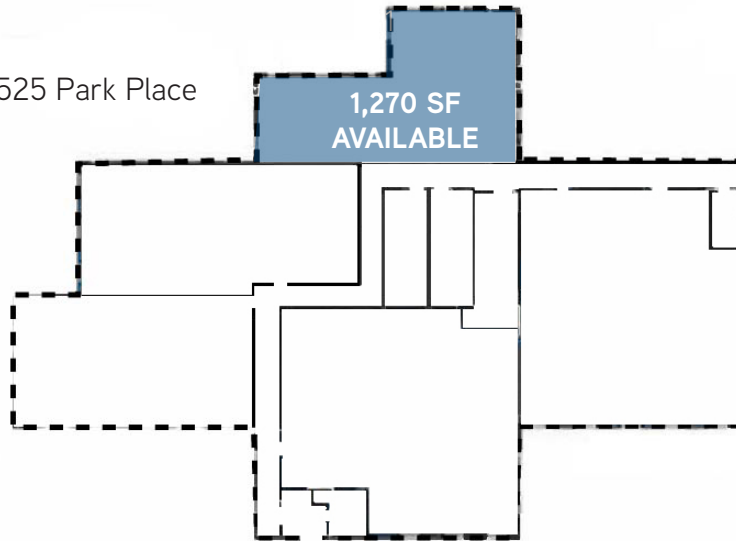


FOR LEASE

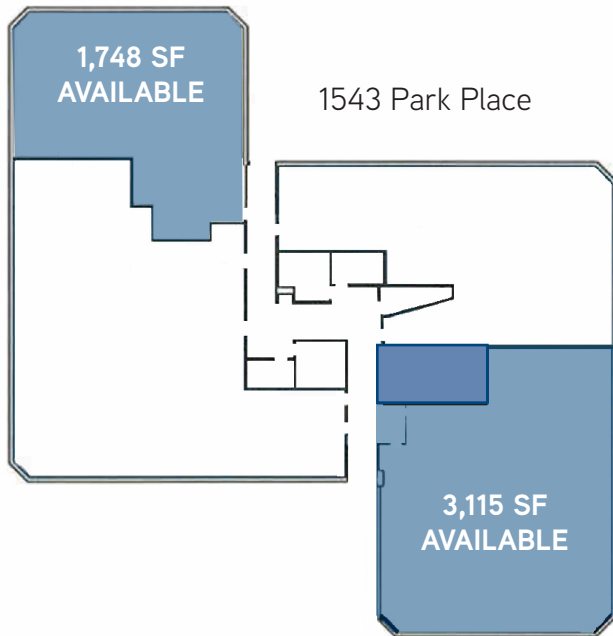
1525-1551 Park Place - Ashwaubenon, WI

FLOOR PLANS

1525 Park Place

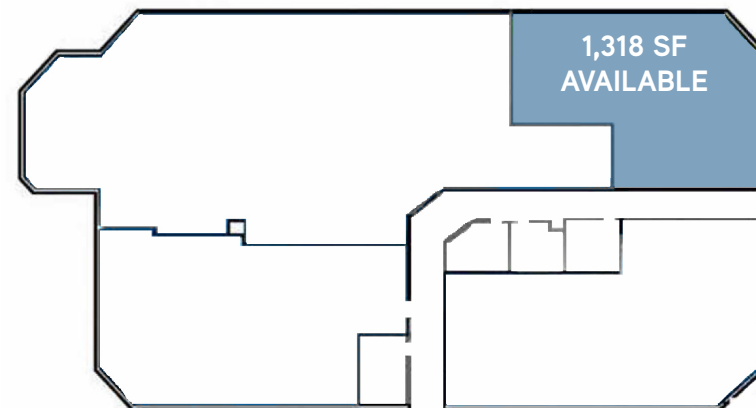


1543 Park Place



1537 Park Place
Upper

1537 Park Place
Lower



1551 Park Place

PARK PLACE



COLLIERS INTERNATIONAL
3051 Progress Way, Suite 211
Kaukauna, WI 54130
920 347 9500
www.colliers.com

MARK PUCCI
DIRECT: 920 347 9425
MOBILE: 920 410 5094
mark.pucci@colliers.com

This document/email has been prepared by Colliers International for advertising and general information only. Colliers International makes no guarantees, representations or warranties of any kind, expressed or implied, regarding the information including, but not limited to, warranties of content, accuracy and reliability. Any interested party should undertake their own inquiries as to the accuracy of the information. Colliers International excludes unequivocally all inferred or implied terms, conditions and warranties arising out of this document and excludes all liability for loss and damages arising there from. This publication is the copyrighted property of Colliers International and /or its licensor(s). © 2016. All rights reserved. This communication is not intended to cause or induce breach of an existing listing agreement.