

FOR LEASE > INDUSTRIAL SPACE

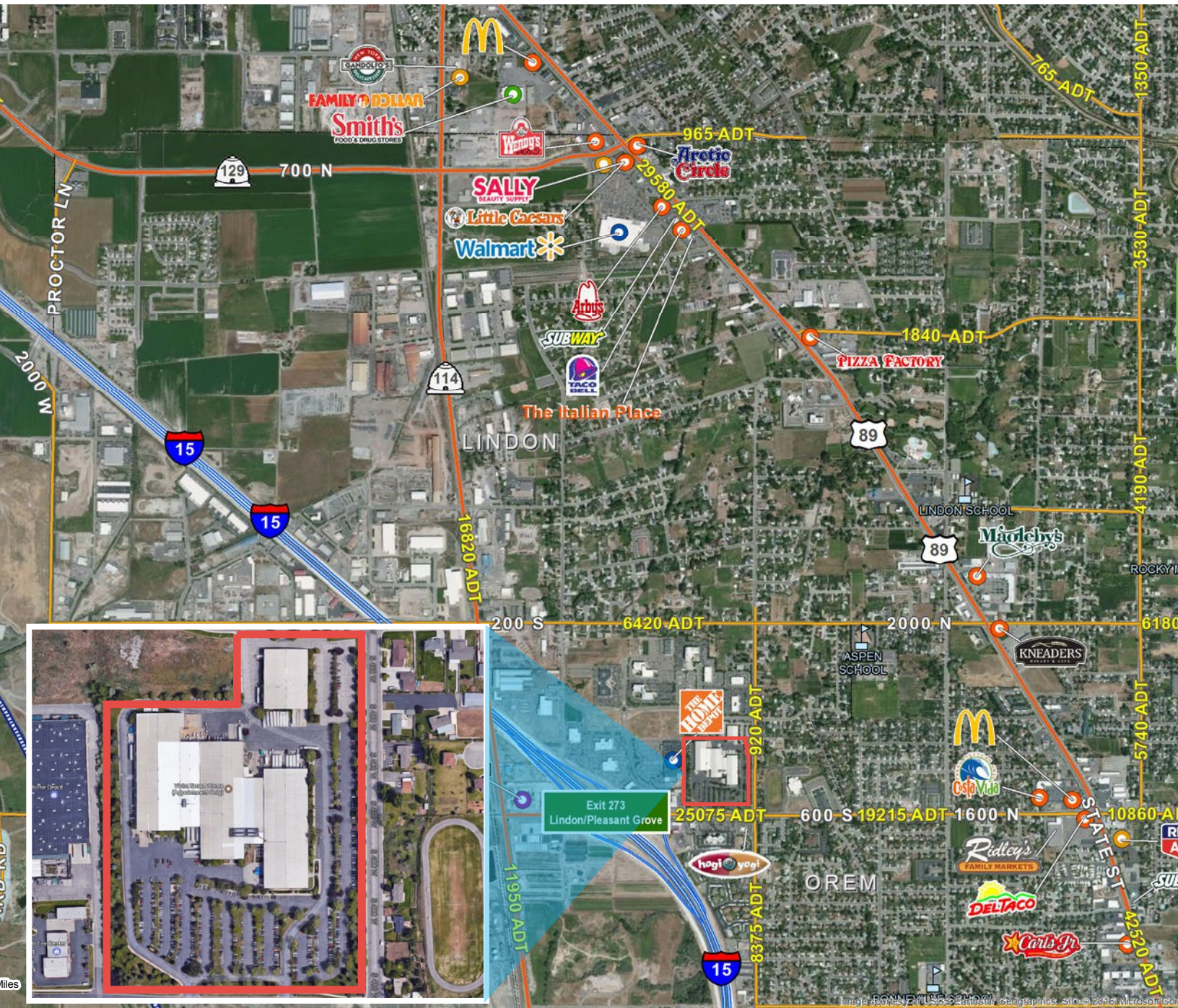
Vivint Industrial Complex

500 SOUTH 500 WEST LINDON, UTAH

FOR LEASE > INDUSTRIAL SPACE

Vivint Industrial Complex

500 SOUTH 500 WEST LINDON, UTAH



Property Information

- > MULTI-TENANT WAREHOUSE
- > Total Available SF: 43,317
- > Building 1: 15,000 SF Office \$0.65 PSF NNN
- > Building 4: 28,317 SF Warehouse \$0.50 PSF NNN
- > Located on 22.77 Acres
- > Brick/Insulated Steel Panel Construction
- > Efficient Gas Fired Radiant Heating (Warehouse)
- > Air Conditioned Warehouse Space
- > Motioned Operated LED High Bay Lights
- > Wet Fire Sprinkling System
- > 2500 KVA/3 Phase/480 Volt Power
- > Clear Height: 12' - 28'
- > DH Doors 18
- > GL Doors 3

This document has been prepared by Colliers International for advertising and general information only. Colliers International makes no guarantees, representations or warranties of any kind, expressed or implied, regarding the information including, but not limited to, warranties of content, accuracy and reliability. Any interested party should undertake their own inquiries as to the accuracy of the information. Colliers International excludes unequivocally all inferred or implied terms, conditions and warranties arising out of this document and excludes all liability for loss and damages arising there from. This publication is the copyrighted property of Colliers International and/or its licensor(s). ©2017. All rights reserved.



Colliers International
2100 Pleasant Grove Blvd. | Suite 200
Pleasant Grove, UT 84062
P: +1 801 610 1300

Jarrod Hunt
+1 801 787 8940
jarrod.hunt@colliers.com

FOR LEASE > INDUSTRIAL SPACE

Vivint Industrial Complex

500 SOUTH 500 WEST LINDON, UTAH

