

**FOR
LEASE**

2210 BROADWAY AVE
BOISE, ID



PROPERTY INFORMATION

Property Type:	Office
Building Size:	4,665 SF
Parking:	4+ PER 1,000 RSF

SPACE AVAILABLE

Suite	Size	Rate
202	460 SF	\$500 PER MONTH FSEJ

HIGHLIGHTS

- » Great location on Broadway, easy and close access to Downtown Boise
- » Monument signage available
- » Newly remodeled and ready for occupancy
- » Walking distance to shopping, offices, residential



LEW MANGLOS, MBA, CCIM, SIOR
208 472 2841
lew.manglos@colliers.com

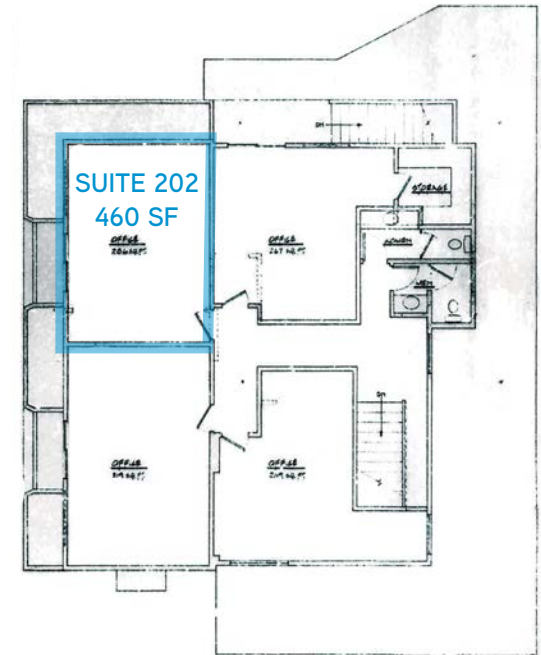
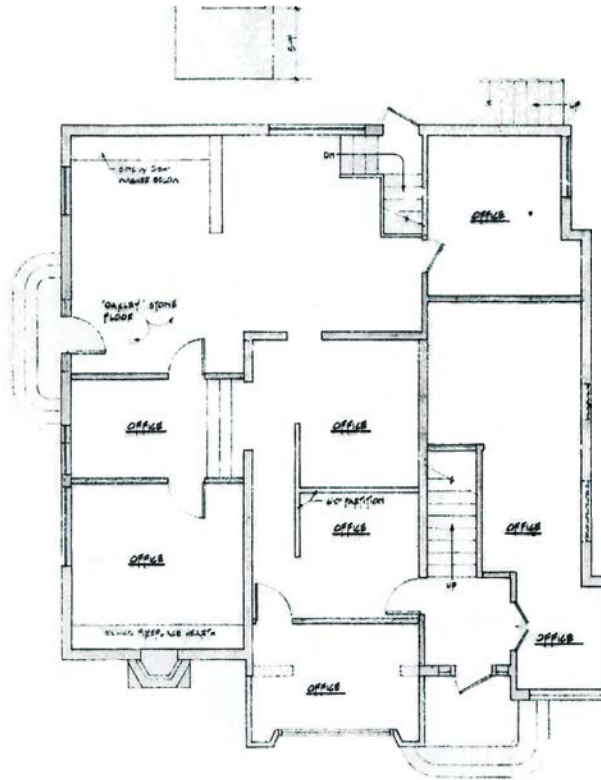
V102417

Colliers International Idaho | 755 West Front Street, Suite 300 Boise, Idaho 83702 | www.colliers.com/boise | 208 345 9000

This document has been prepared by Colliers International for advertising and general information only. Colliers International makes no guarantees, representations or warranties of any kind, expressed or implied, regarding the information including, but not limited to, warranties of content, accuracy and reliability. Any interested party should undertake their own inquiries as to the accuracy of the information. Colliers International excludes unequivocally all inferred or implied terms, conditions and warranties arising out of this document and excludes all liability for loss and damages arising there from. This publication is the copyrighted property of Colliers International and/or its licensor(s). ©2016. All rights reserved

**FOR
LEASE**

2210 BROADWAY AVE
BOISE, ID



Colliers
INTERNATIONAL

LEW MANGLOS, MBA, CCIM, SIOR
208 472 2841
lew.manglos@colliers.com

Colliers International Idaho | 755 West Front Street, Suite 300 Boise, Idaho 83702 | www.colliers.com/boise | 208 345 9000