

Sky Harbor

B U S I N E S S P A R K

FOR LEASE > FLEX SPACE

7002-7042 South Revere Parkway
CENTENNIAL, CO 80112

> READY TO DO DEALS

> TENANT IMPROVEMENT & COMMISSION \$\$\$ AVAILABLE!

> HIGH-SPEED FIBER NOW AVAILABLE! (2-20 MBPS)



Building Information

- > Project Size: 112,058 SF in 5 Buildings
- > Loading: Dock High, Van High and Drive-In Doors (Varies Per Unit)
- > Clear Height: 14'-16' (Varies Per Unit)
- > Year Built: 1983
- > Parking: 2.7:1,000 SF
- > Rate: \$9.00-\$10.00/SF NNN (Varies per Suite)
- > 2018 Expenses: \$5.85/SF (plus \$0.93/SF for Roof/HVAC/ Parking Lot Reserves)
- > Flexible Landlord Eager to Make Deals.
- > Easy Access to Arapahoe Road, I-25, Parker Road and Centennial Airport.



COLLIERS INTERNATIONAL
4643 South Ulster St., Suite 1000
Denver, CO 80237
www.colliers.com



AGENT: T.J. SMITH, SIOR
303 283 4576
DENVER, CO
tj.smith@colliers.com

FOR LEASE > FLEX SPACE

7002-7042 South Revere Parkway
CENTENNIAL, CO 80112

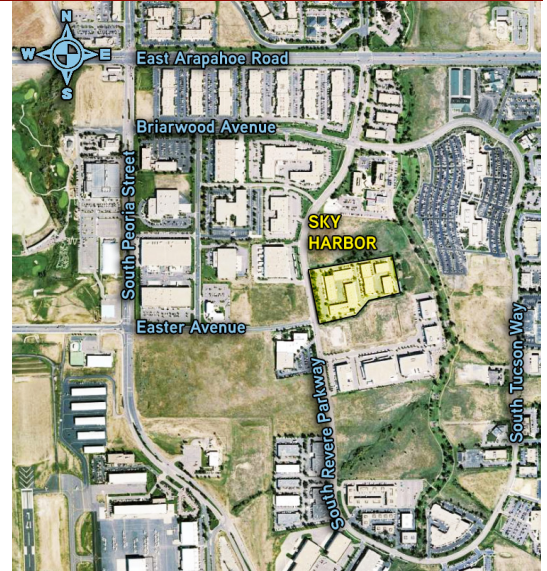
Sky Harbor

B U S I N E S S P A R K

Availability June 2018

Suite	Size	Minimum Divisibility	Loading	Available
100	4,250 SF	4,250 SF	2-(2")DH	30 Days
480-490	8,906 SF	8,906 SF	3-DI, & 1-½ DH	Immediately
30	4,639 SF	4,639 SF	2-(2")DH	September 2018
60	5,735 SF	5,735 SF	2-(2")DH	September 2018
30-60	10,374 SF	4,639 SF	4-(2")DH	September 2018

All suites are 120/208V, 3-phase



Contact Us

AGENT: T.J. SMITH, SIOR

303 283 4576

DENVER, CO

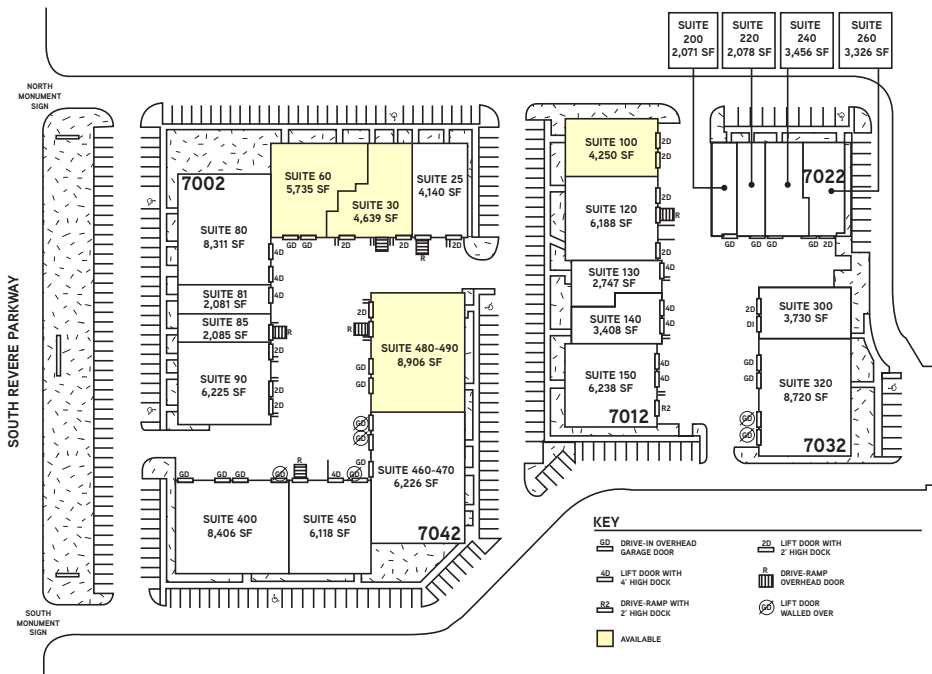
tj.smith@colliers.com

COLLIERS INTERNATIONAL
4643 South Ulster Street, Suite 1000
Denver, CO 80237

www.colliers.com



This document has been prepared by Colliers International for advertising purposes only. The information contained herein has been obtained from sources we deem reliable. While we have no reason to doubt its accuracy, no warranty or representation is made of the foregoing information. Terms of sale or lease and availability are subject to change or withdrawal without notice.



MARK  CAPITAL

REAL ESTATE
AWARD
FOR CUSTOMER SERVICE EXCELLENCE