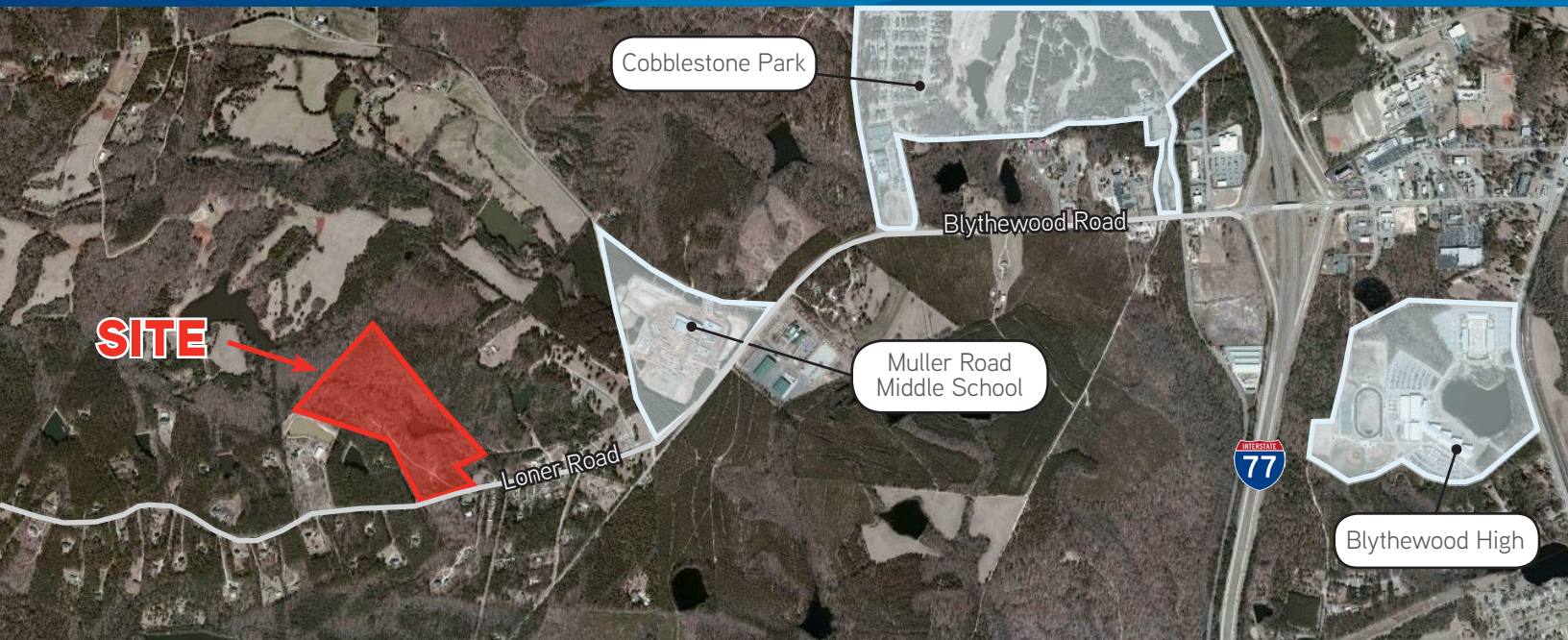


FOR SALE > LAND > SINGLE FAMILY DEVELOPMENT SITE

±40 Acres with Pond



1150 LONER ROAD, BLYTHEWOOD, SOUTH CAROLINA 29016



Developable Land for Sale > Loner Road

The property consists of ±40 acres along Loner Road in Blythewood, South Carolina, a fast growing market within the Columbia MSA. The site has roughly ±27 usable acres and would be a great site for single family development with 670 feet of frontage along Loner Road.

Property Details

- > Site: ±40 Acres
±27 usable acres
- > Zoning: RU
- > Potential Use: Single Family Homes
- > Price: \$375,000.00

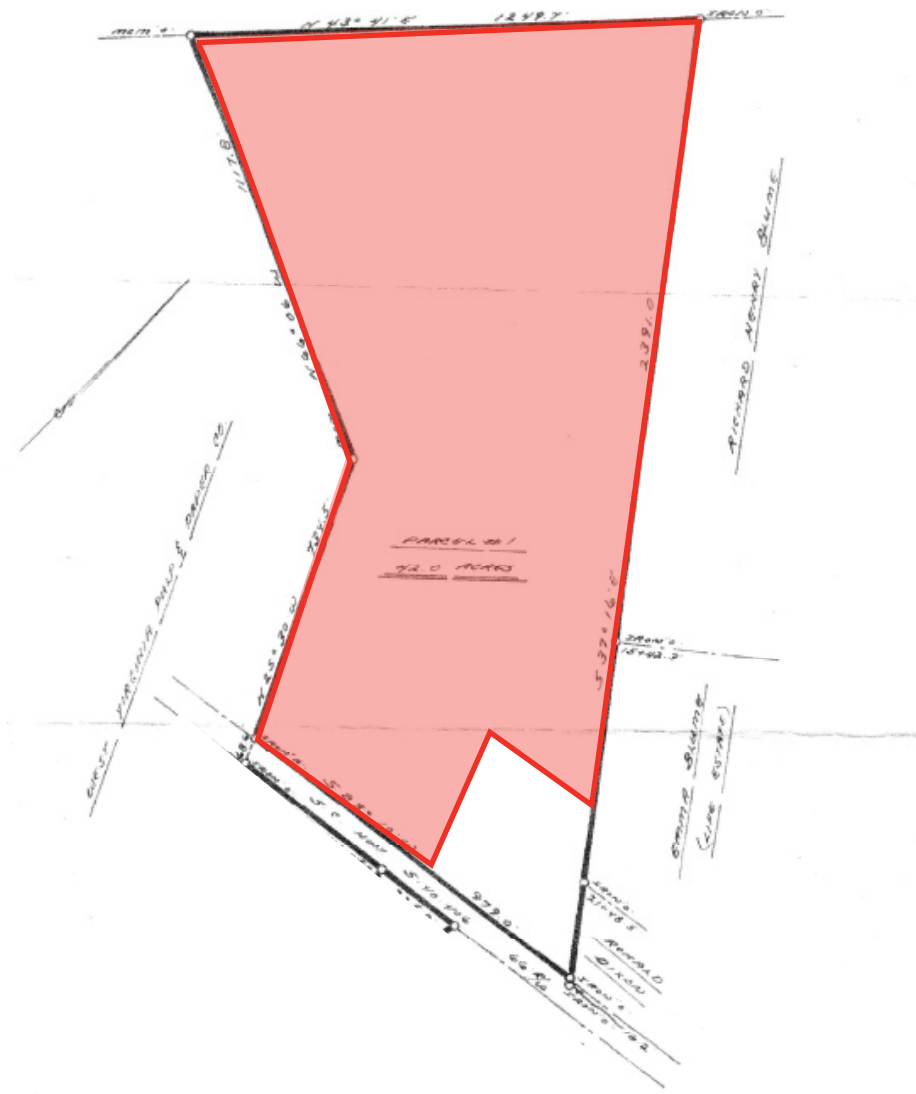
DEMOGRAPHICS - 2017 ESTIMATE

	<u>1 mile</u>	<u>3 miles</u>	<u>5 miles</u>
Population:	354	4,102	17,100
Households:	122	1,552	6,257
Average Household Income:	\$88,025	\$87,922	\$90,319
2017 - 2022 Population Growth:	0.89%	2.30%	2.20%

CRAIG WAITES
803 401 4224 DIRECT
craig.waites@colliers.com

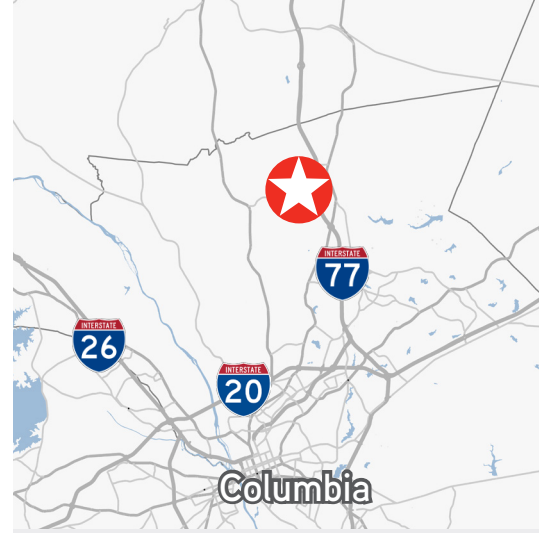
COLLIERS INTERNATIONAL
1301 Gervais Street, Suite 600
Columbia, South Carolina 29201
www.colliers.com

1150 Loner Road > Plat



Zoned Richland County School District 2 Schools:

Bethel-Hanberry Elementary
Muller Road Middle School
Westwood High School



Contact Us

CRAIG WAITES

803 401 4224 DIRECT

craig.waites@colliers.com

COLLIERS INTERNATIONAL
1301 Gervais Street, Suite 600
Columbia, South Carolina 29201
www.colliers.com

This document has been prepared by Colliers International for advertising and general information only. Colliers International makes no guarantees, representations or warranties of any kind, expressed or implied, regarding the information including, but not limited to, warranties of content, accuracy and reliability. Any interested party should undertake their own inquiries as to the accuracy of the information. Colliers International excludes unequivocally all inferred or implied terms, conditions and warranties arising out of this document and excludes all liability for loss and damages arising there from. This publication is the copyrighted property of Colliers International and/or its licensors(s). ©2014. All rights reserved.

