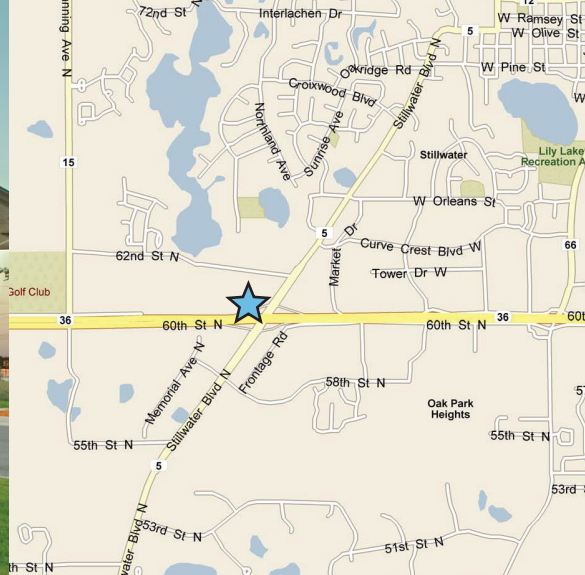


FOR LEASE > OFFICE/MEDICAL SPACE



# Curve Crest Professional Building

2850 CURVE CREST BOULEVARD, STILLWATER, MN 55082



## Building Amenities

- > Attractive 26,687 square foot building suited for professional office and medical users
- > Nicely built out small suites available
- > State-of-the-art building systems with card key access
- > Ample surface parking
- > Porte-cochère over main entrance
- > Immediate proximity to many restaurants, golf courses and retail
- > Excellent visibility off Highway 36 and Highway 5
- > Pad site available for future development



View our property  
e-brochure on your  
smartphone.

Developed and Managed by



[www.mspcommercial.net](http://www.mspcommercial.net)

**COLLIERS INTERNATIONAL**  
900 2nd Avenue South, Suite 1575  
Minneapolis, MN 55402

[www.colliers.com/msp](http://www.colliers.com/msp)

LOUIS SUAREZ MBA, CCIM  
952 837 3061  
[louis.suarez@colliers.com](mailto:louis.suarez@colliers.com)

BRIAN BRUGGEMAN CCIM  
952 837 3079  
[brian.briggeman@colliers.com](mailto:brian.briggeman@colliers.com)

# Curve Crest Professional Building

**PROPERTY ADDRESS:**

2850 Curve Crest Boulevard  
Stillwater, MN 55082

**BUILDING SQUARE FEET:**

26,687 square feet

**AVAILABLE:**

**Second Floor:** 4,414 square feet

**PARKING:**

5:1,000

**ACCESSIBILITY:**

Accessible to Curve Crest Boulevard off  
Stillwater Boulevard & Highway 36

**RENTAL RATES:**

\$16.50 per RSF

**2018 EST. CAM & REAL ESTATE TAX:**

\$ 8.49 per square foot CAM

\$ 7.09 per square foot Tax

\$ 15.58 total per square foot

**AMENITIES:**

- State-of-the-art business building systems include direct digital controlled, high efficiency HVAC
- Card key access
- Immediate access to many fast food and sit-down restaurants
- Developed and managed by MSP Commercial



## For Leasing Information, Contact:

LOUIS SUAREZ MBA, CCIM  
952 837 3061  
[louis.suarez@colliers.com](mailto:louis.suarez@colliers.com)

BRIAN BRUGGEMAN CCIM  
952 837 3079  
[brian.bruggeman@colliers.com](mailto:brian.bruggeman@colliers.com)

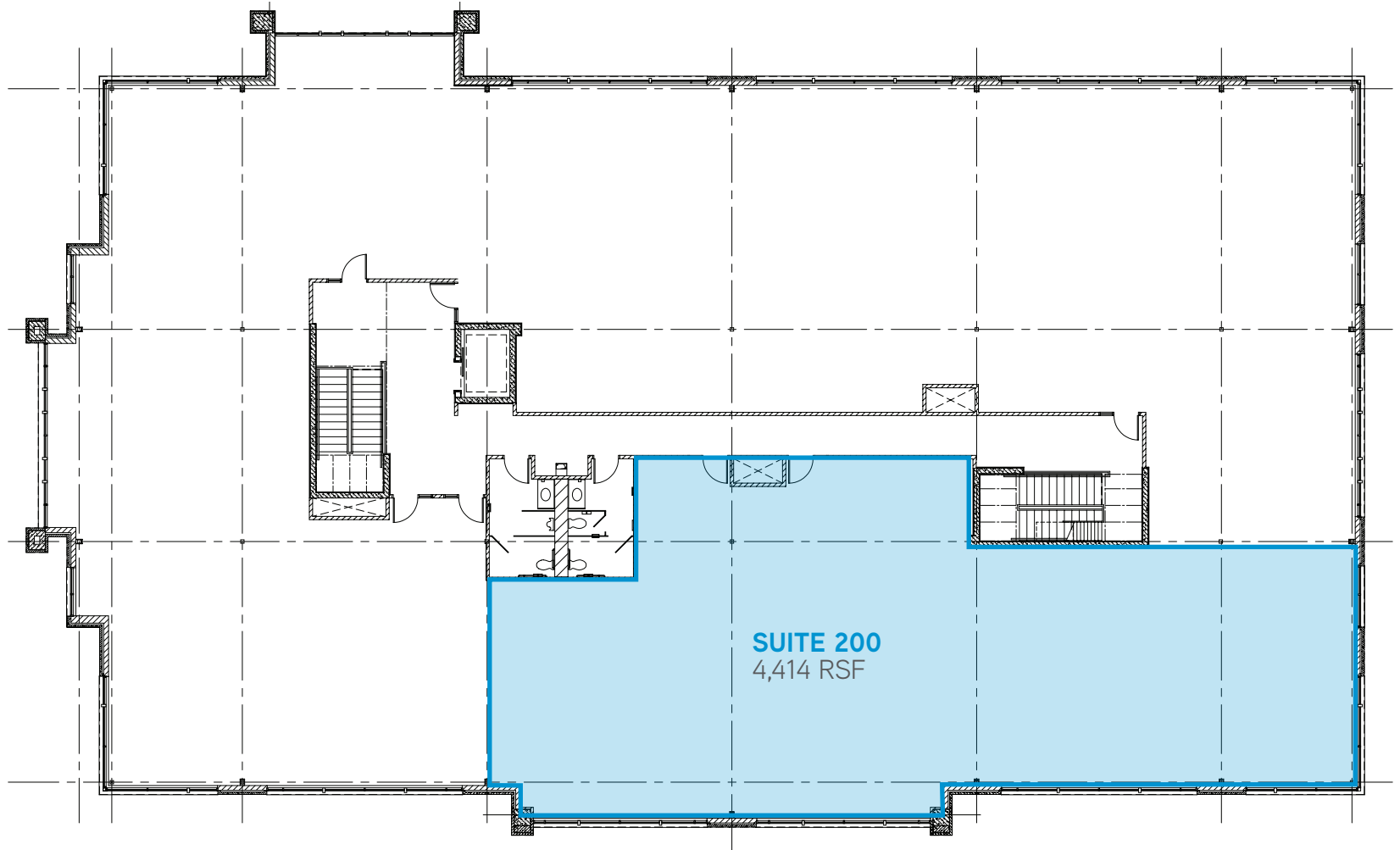
COLLIERS INTERNATIONAL  
900 2nd Avenue South, Suite 1575  
Minneapolis, MN 55402  
[www.colliers.com/msp](http://www.colliers.com/msp)

# Curve Crest Professional Building

2850 CURVE CREST BOULEVARD, STILLWATER, MN 55082



## SECOND FLOOR



LOUIS SUAREZ MBA, CCIM  
952 837 3061  
[louis.suarez@colliers.com](mailto:louis.suarez@colliers.com)

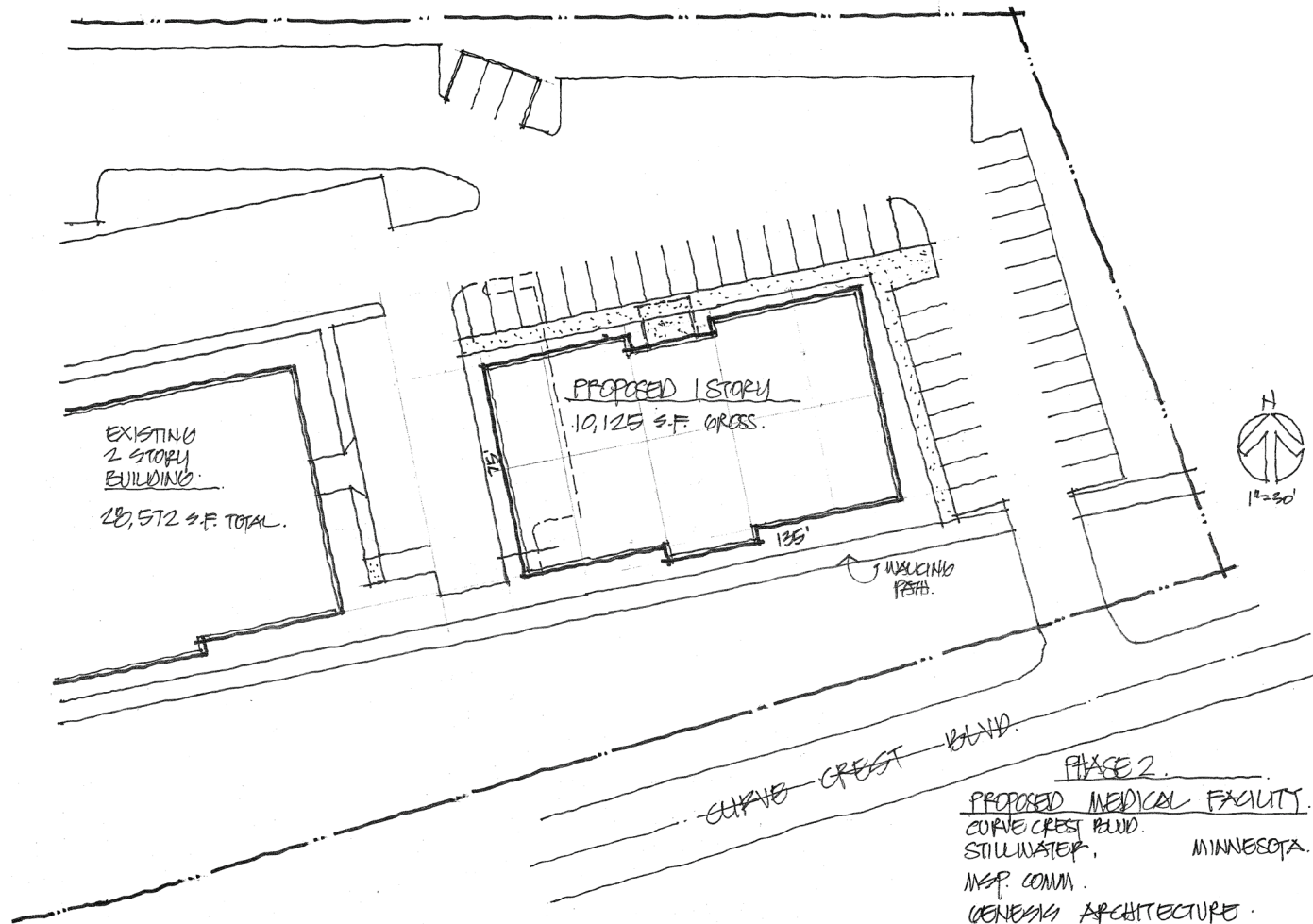
BRIAN BRUGGEMAN CCIM  
952 837 3079  
[brian.bruggeman@colliers.com](mailto:brian.bruggeman@colliers.com)

# Curve Crest Pad Site

CURVE CREST BOULEVARD, STILLWATER, MN 55082



## PROPOSED BUILDING PLAN



LOUIS SUAREZ MBA, CCIM  
952 837 3061  
[louis.suarez@colliers.com](mailto:louis.suarez@colliers.com)

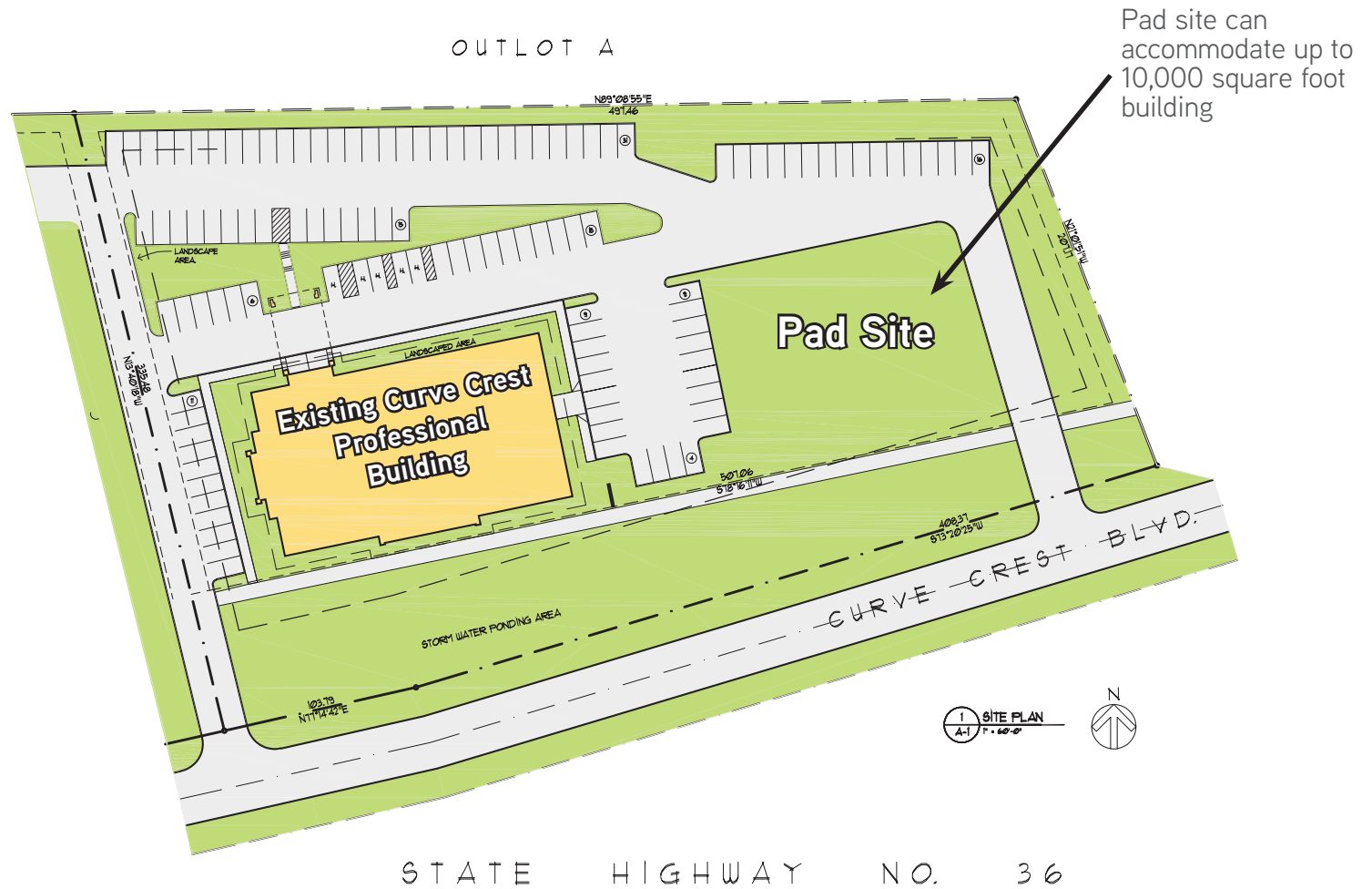
BRIAN BRUGGEMAN CCIM  
952 837 3079  
[brian.briggeman@colliers.com](mailto:brian.briggeman@colliers.com)

# Curve Crest Pad Site

CURVE CREST BOULEVARD, STILLWATER, MN 55082



## SITE PLAN - PAD SITE



LOUIS SUAREZ MBA, CCIM  
952 837 3061  
[louis.suarez@colliers.com](mailto:louis.suarez@colliers.com)

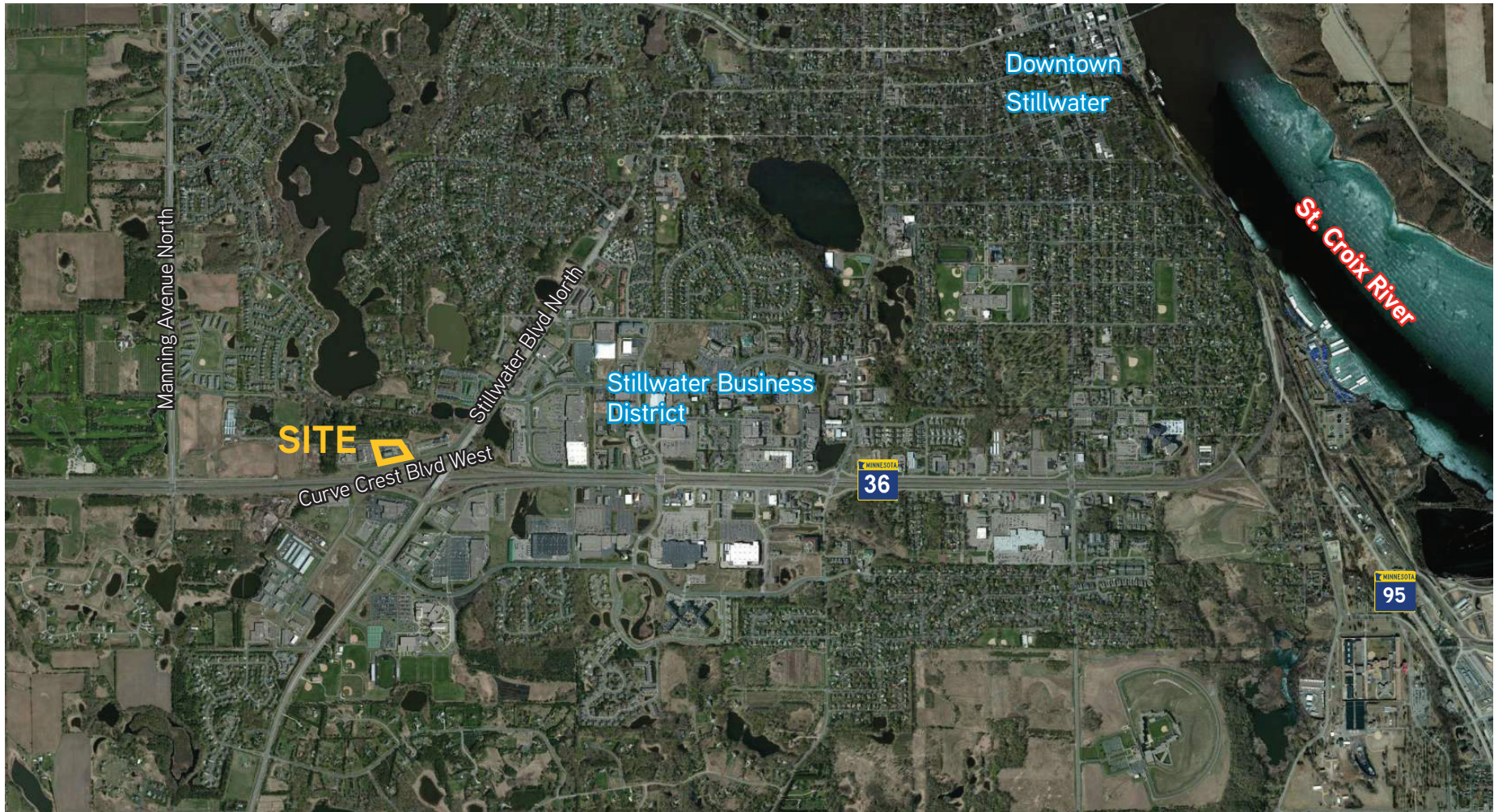
BRIAN BRUGGEMAN CCIM  
952 837 3079  
[brian.bruggeman@colliers.com](mailto:brian.bruggeman@colliers.com)

# Curve Crest Professional Building

2850 CURVE CREST BOULEVARD, STILLWATER, MN 55082



## AERIAL VIEW



LOUIS SUAREZ MBA, CCIM  
952 837 3061  
[louis.suarez@colliers.com](mailto:louis.suarez@colliers.com)

BRIAN BRUGGEMAN CCIM  
952 837 3079  
[brian.bruggeman@colliers.com](mailto:brian.bruggeman@colliers.com)

