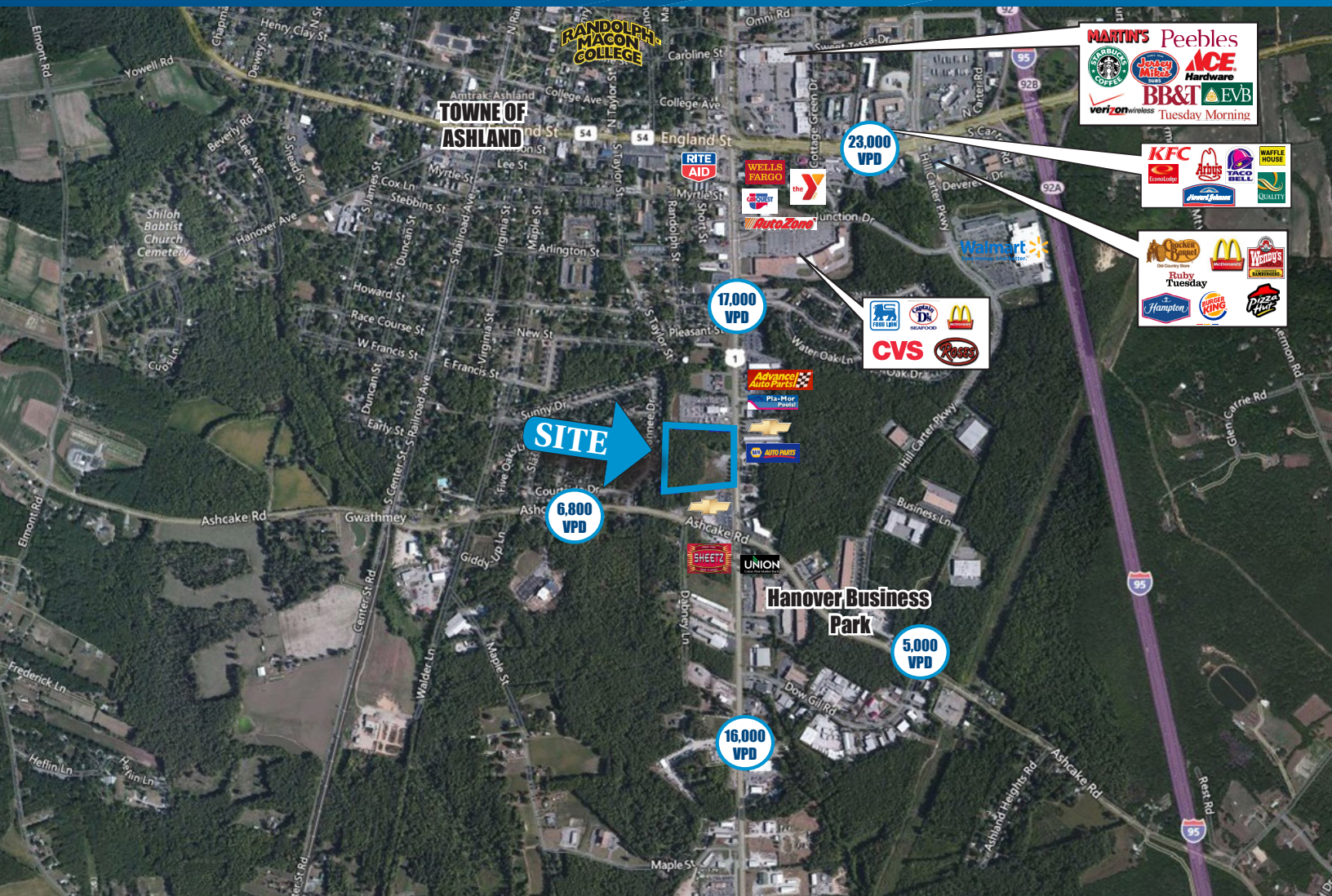


FOR SALE > LAND - 13.63 ACRES

500 S. Washington Highway

ASHLAND, VA 23005



Property Features

- ±13.6 acres, some wetlands
- Zoned PSC (Planned Shopping Center)
- Public water/sewer available
- Limited engineering work available
- Owner will consider subdividing
- Located at the intersection of Ashcake Road and Route 1
- Sale price: \$1,930,000

DEMOGRAPHIC FACTS	1 MILE	3 MILES	5 MILES
POPULATION	3,110	8,547	21,111
TOTAL EMPLOYEES	3,426	7,928	18,358
AVERAGE HH INCOME	\$64,448	\$66,693	\$88,547
TRAFFIC COUNTS	±17,000 VPD		

AGENT: DAVID KALMAN
804 539 8404
RICHMOND, VA
david.kalman@colliers.com

AGENT: BILL MATTOX, SIOR
804 591 2428
RICHMOND, VA
bill.mattox@colliers.com

COLLIERS INTERNATIONAL
6606 W. Broad Street, Suite 400
Richmond, VA 23230
www.colliers.com/richmond

500 S. Washington Highway

[illegible]

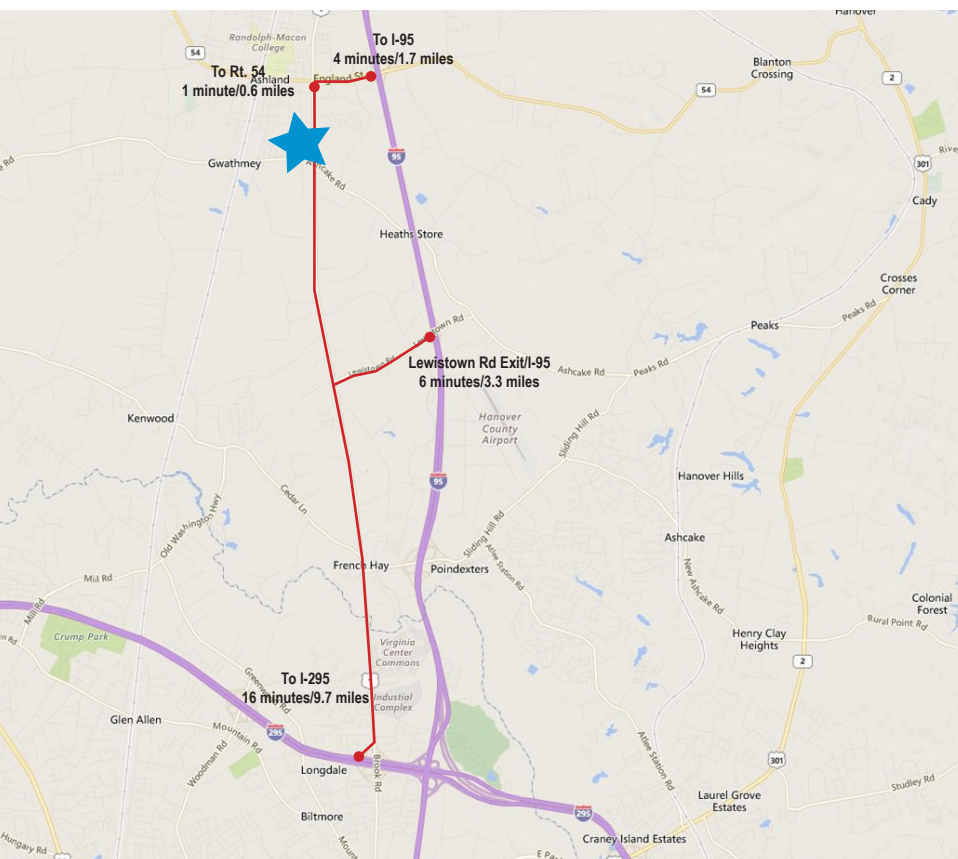
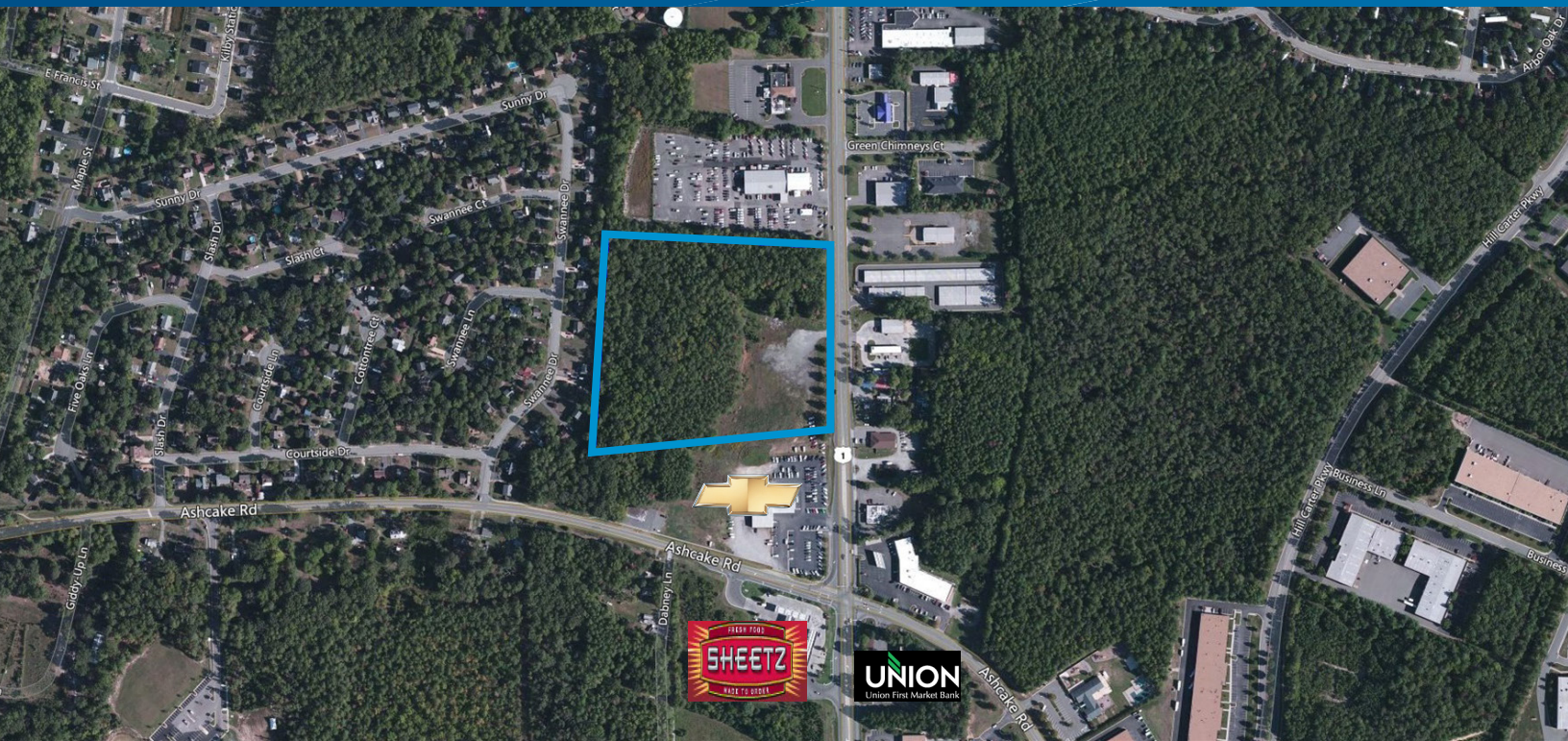
COLLIERS INTERNATIONAL
6606 W. Broad Street, Suite 400
Richmond, VA 23230
www.colliers.com/richmond

FOR SALE > LAND - 13.63 ACRES

500 S. Washington Highway

ASHLAND, VA 23005

Colliers
INTERNATIONAL



FOR ADDITIONAL INFORMATION
PLEASE CONTACT:

AGENT: DAVID KALMAN

804 539 8404
RICHMOND, VA
david.kalman@colliers.com

AGENT: BILL MATTOX, SIOR

804 591 2428
RICHMOND, VA
bill.mattox@colliers.com

COLLIERS INTERNATIONAL
6606 W. Broad Street, Suite 400
Richmond, VA 23230
www.colliers.com/richmond