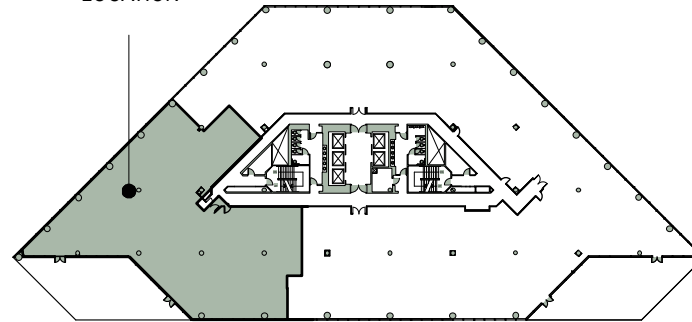
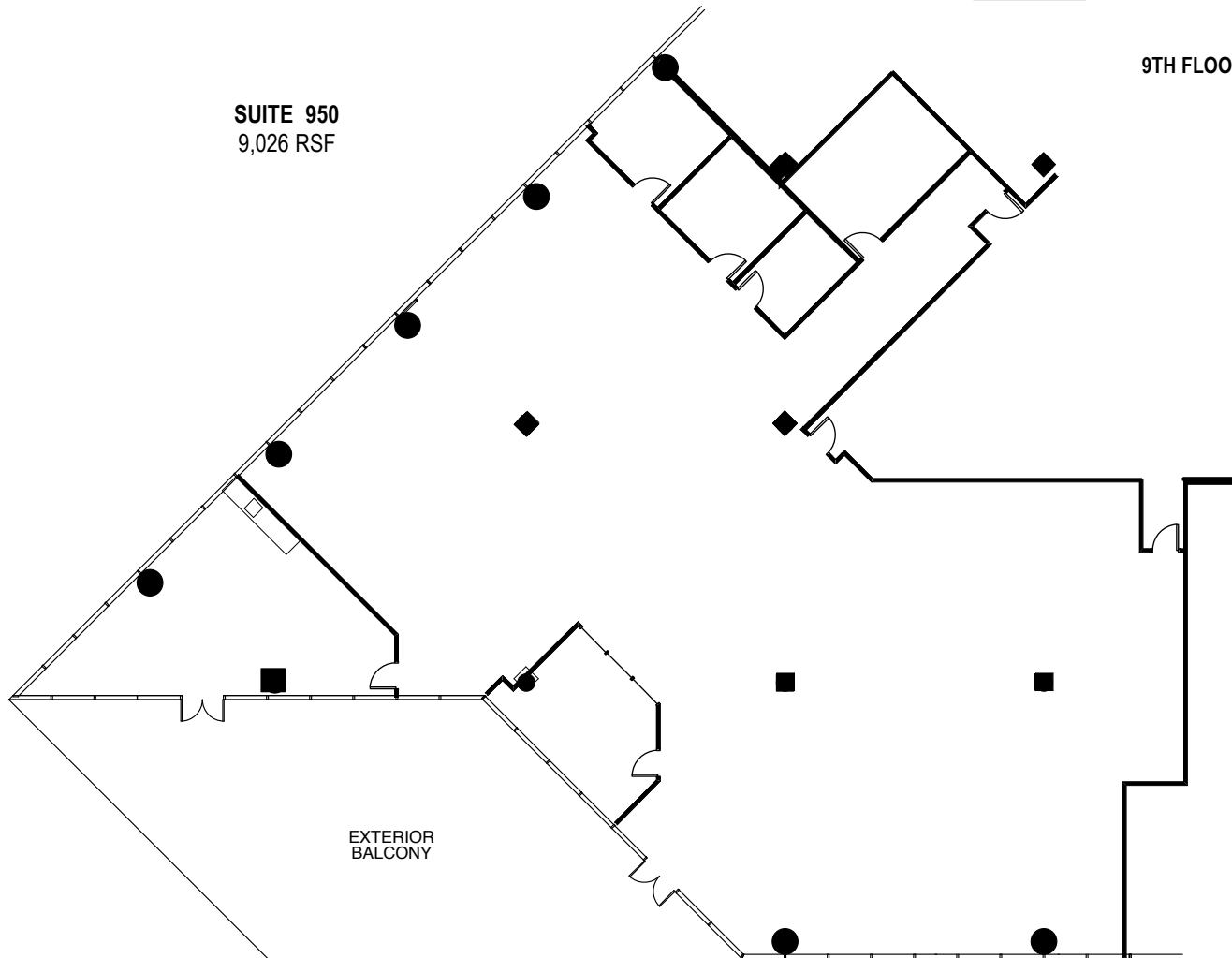


SUITE FLOOR
LOCATION



9TH FLOOR BLDG KEY PLAN

SUITE 950
9,026 RSF



EXTERIOR
BALCONY

Colliers
INTERNATIONAL

Colliers International
1850 Mount Diablo Boulevard, Suite 200
Walnut Creek, CA 94596 | United States
www.colliers.com

LEASING AGENT

Scott Ellis
(925) 279-5575

scott.ellis@colliers.com

Matt Hurd
(925) 279-5567

matt.hurd@colliers.com

Eric Erickson
(925) 279-5580

eric.erickson@colliers.com

Concord Gateway I

1850 Gateway Blvd.
Concord, CA 94520

Ninth Floor

Owned and Managed by

**Sierra Pacific
Properties, Inc.**

Approximate Area Calculations
Subject To Verification:

9,026 rsf

As-built Plan To Be Verified

This information displayed while not
guaranteed has been secured by sources we
believe to be reliable. This information is
subject to errors & omissions. Any tenant
should conduct their own investigation.

Plan Revision - 2-5-18