

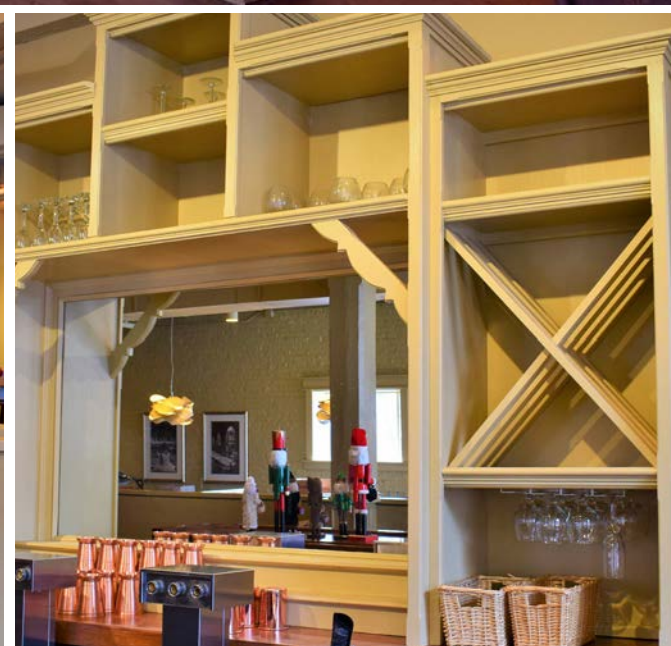


shockoe slip

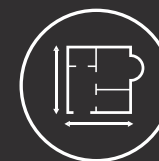
Accelerating success.

FOR LEASE > 2,699 SF
PREMIER RESTAURANT LOCATION
1323 – 1331 E. CARY STREET, RICHMOND





PROPERTY FEATURES



2,699± SF
second generation
restaurant space



Walkable
to nearby residential



Patio
option available



Highway
easy access



120,597
daytime population
3 mile radius



38 Hotels
3 mile radius

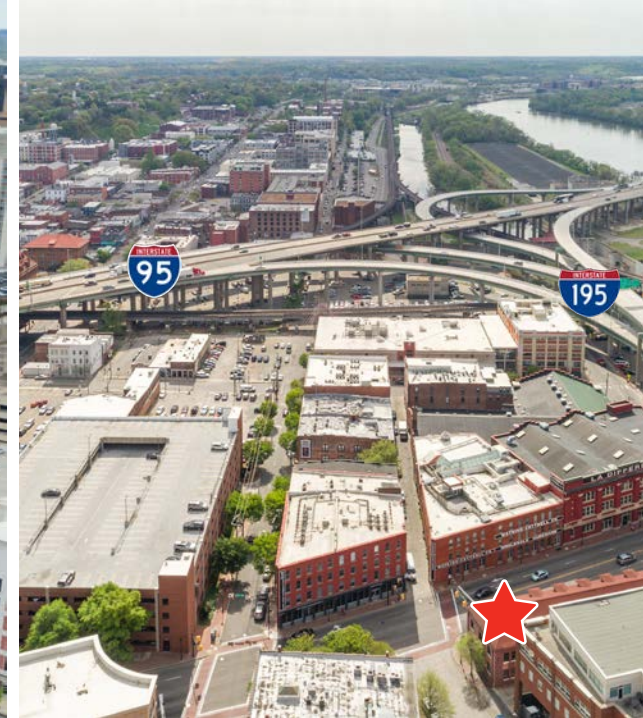


Furniture, fixtures &
equipment available



129,459
Population
3 mile radius





CONTACTS

Martin Blum ccim
Vice President
+1 804 591 2408
martin.blum@colliers.com

Annie O'Connor
Associate
+1 804 591 2418
annie.oconnor@colliers.com



COLLIERS INTERNATIONAL
7200 Glen Forest Drive | Suite 200
Richmond, VA 23226
www.colliers.com/richmond

- | | | |
|--------------------------------|--------------------------------------|--------------------------------|
| 1. The Hard Shell | 13. Shockoe Espresso & Roastery | 25. James Center |
| 2. Cha Cha's Cantina | 14. Urban Farmhouse Market & Cafe | 26. Canal Walk |
| 3. 14th and Cary Parking lot | 15. Bistro Bobette | 27. Turning Basin |
| 4. LaDIFF | 16. The Tobacco Company Restaurant | 28. 15th and Main City Parking |
| 5. Southern Railway Taphouse | 17. Sam Miller's | |
| 6. Siné Irish Pub & Restaurant | 18. The Berkeley Hotel | |
| 7. Site | 19. Tap House Grill | |
| 8. Morton's The Steakhouse | 20. Mijas Cantina | |
| 9. Courtyard by Marriott | 21. Peking Restaurant | |
| 10. Jimmy John's | 22. Kobe Japanese Steak and Sushi | |
| 11. City Dogs | 23. Omni Richmond Hotel | |
| 12. The Martin Agency | 24. Bank of America Financial Center | |