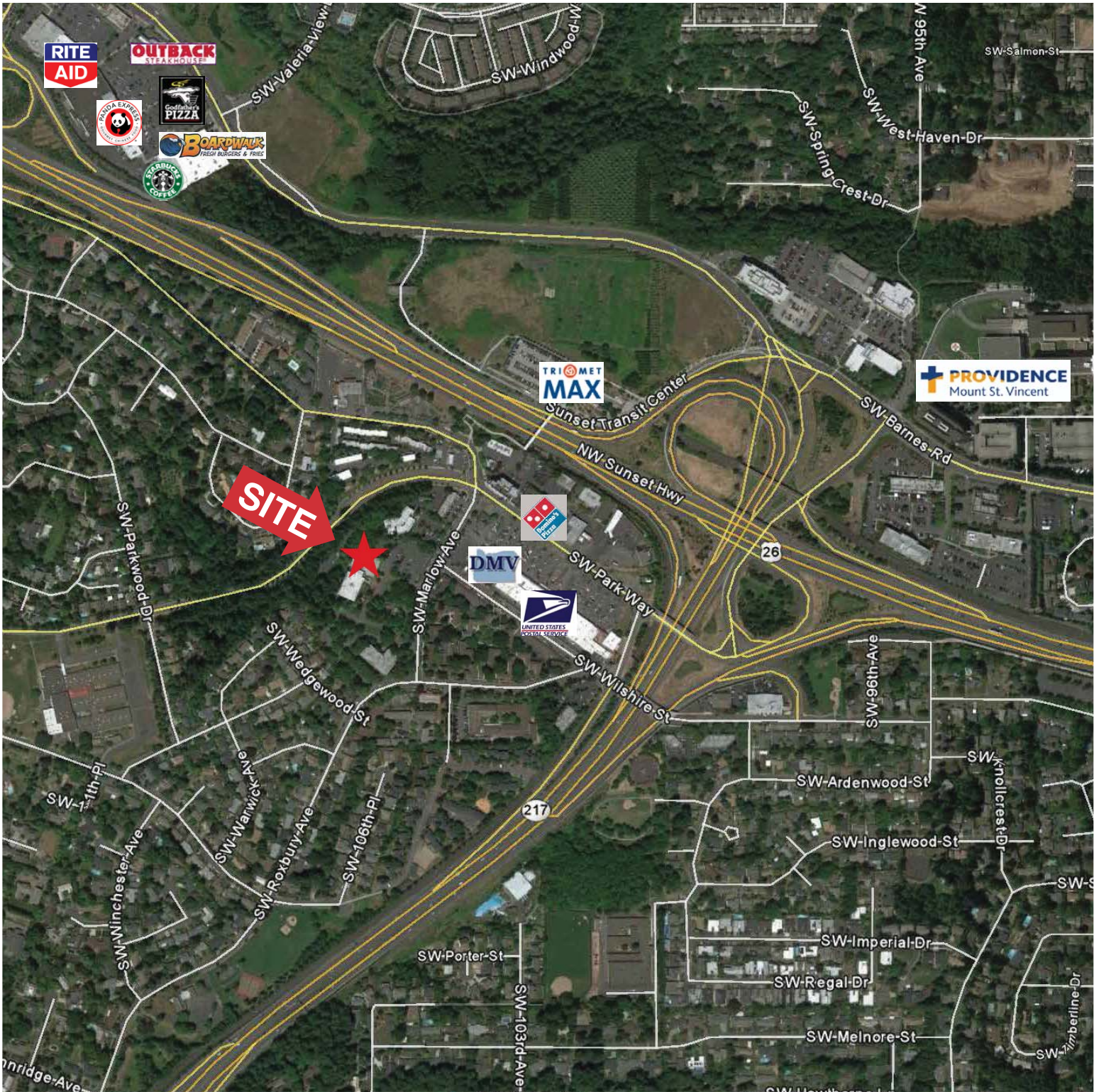


FOR LEASE

North Pacific Plaza

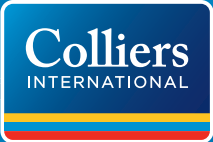
1675 SW MARLOW PORTLAND, OR 97225



FOR LEASE

North Pacific Plaza

1675 SW MARLOW PORTLAND, OR 97225



Property Highlights

- › Conveniently located adjacent to Highway 26/217 intersection
- › Minutes from St. Vincent Medical Complex
- › Short walking or bicycle distance to MAX station
- › Great views of forest setting and Northwest landscape
- › High speed DSL and T1 provided by Comcast, Integra and Frontier
- › Parking ratio 4.5/1,000
- › Covered parking available
- › Flexible floor plans
- › In-house space planning included
- › Shared building conference room and kitchen
- › Shower facilities

This document has been prepared by Colliers International for advertising and general information only. Colliers International makes no guarantees, representations or warranties of any kind, expressed or implied, regarding the information including, but not limited to, warranties of content, accuracy and reliability. Any interested party should undertake their own inquiries as to the accuracy of the information. Colliers International excludes unequivocally all inferred or implied terms, conditions and warranties arising out of this document and excludes all liability for loss and damages arising there from. This publication is the copyrighted property of Colliers International and/or its licensor(s). ©2016. All rights reserved. 1/11/16

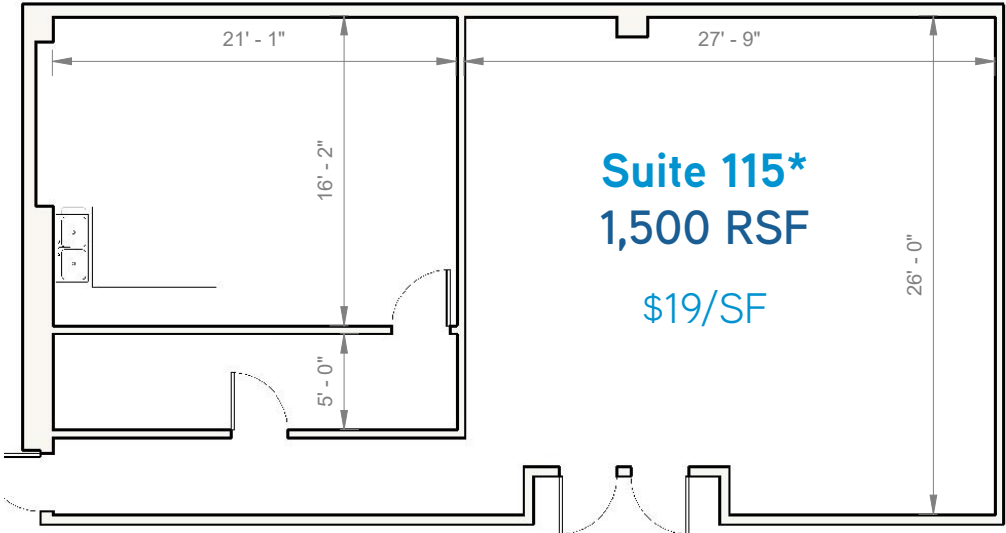
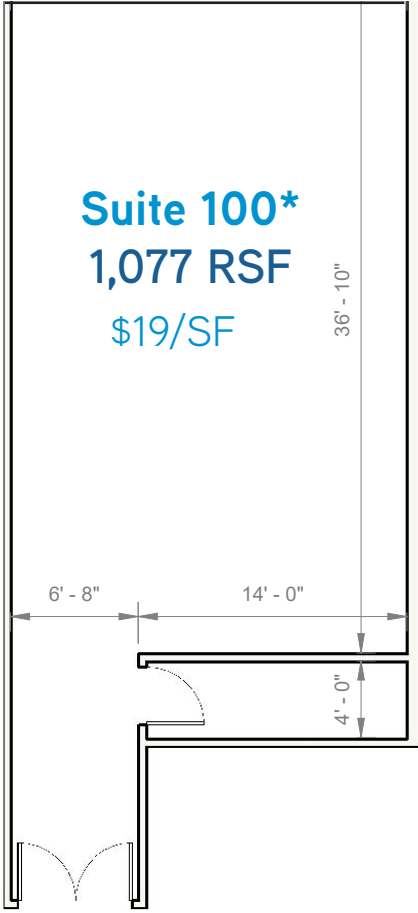


CARTER BEYL
503 542 5892
PORTLAND, OR
carter.beyl@colliers.com

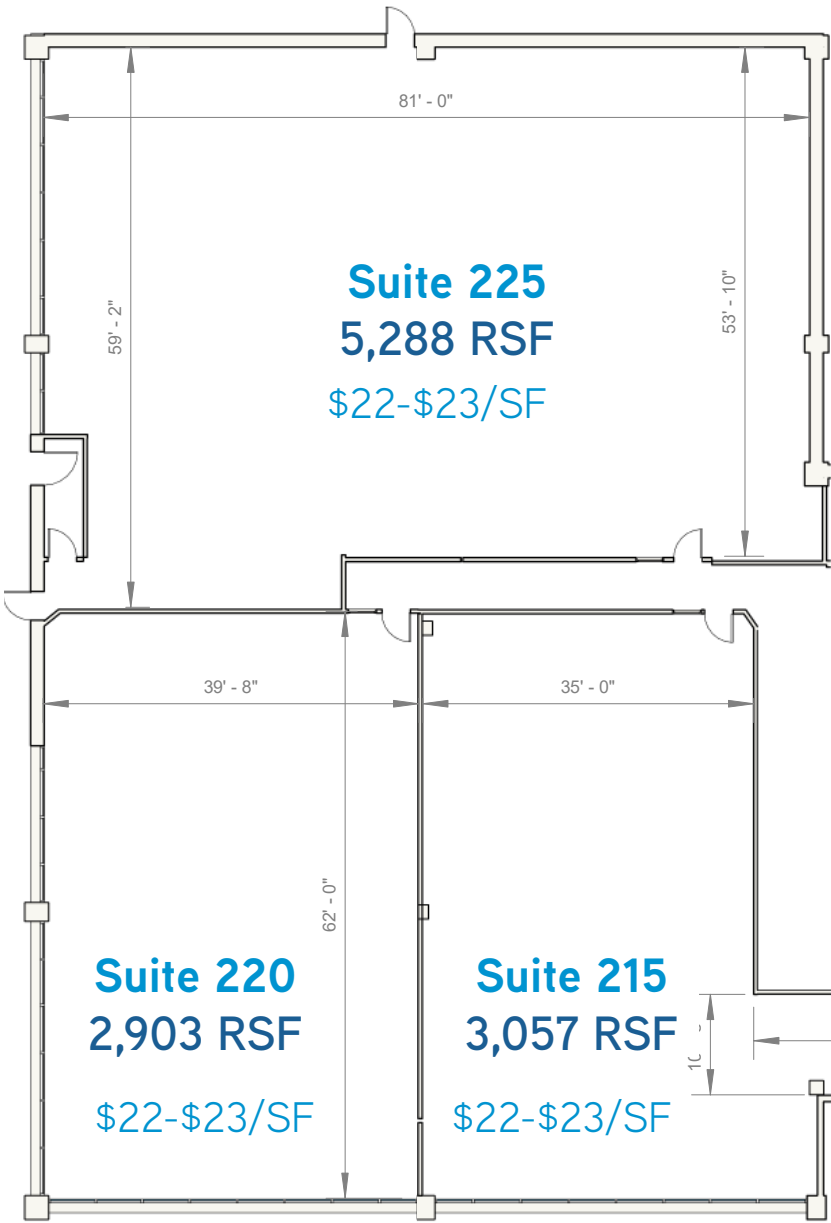
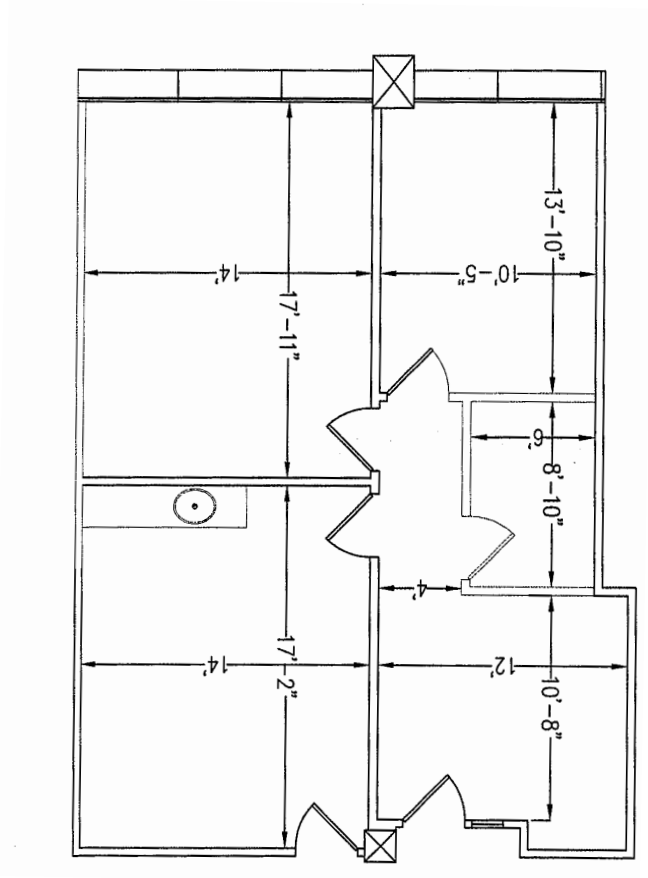
J.T. SAND
503 542 5896
PORTLAND, OR
jt.sand@colliers.com

COLLIERS INTERNATIONAL
851 SW Sixth Avenue, Suite 1200
Portland, OR 97204
www.colliers.com

Floor Plans



**Note: Suites 100 & 115 do not have exterior windows*



| AVAILABILITIES | | |
|----------------|-------|--------------|
| Suite | SF | Rental Rate |
| 100 | 1,077 | \$19/SF |
| 115 | 1,500 | \$19/SF |
| 200 | 1,710 | \$22-\$23/SF |
| 215 | 3,057 | \$22-\$23/SF |
| 220 | 2,903 | \$22-\$23/SF |
| 225 | 5,288 | \$22-\$23/SF |
| 305 | 1,044 | \$24/SF |

