

Plug & Play
Immediately Available

89 State St



RioTinto
stadium

Colliers

Exit 295
9000 South



261,000 ADT

Off Ramp to 9000 S.

UTA FRONTRUNNER

On Ramp to I-15

MAVERIK

9000 South - 44,000 ADT

MAVERIK

Sandy Parkway - 6,000 ADT

Office For Lease or Sale

Danbury Corporate Park

8851-8911 S. Sandy Parkway | Sandy, Utah 84070

Available

- **Building A** Suite 210 - 2,686 RSF
2nd Floor Suite 220 - 6,246 RSF
- **Building B** Suite 100 - 5,033 RSF
1st Floor
- **Building C** Full Floor - 15,258 RSF
2nd Floor

Property Highlights

- Move-in ready
- Furnishings available.
- Unparalleled central valley location with immediate I-15 access at 9000 South
- Fiber optic connectivity
- Floor to ceiling glass windows
- Parking ratio: 4.5/1,000

Available:

Building A	2,686 RSF
	6,246 RSF
Building B	5,033 RSF
Building C	15,258 RSF

Lease Rate:

\$18.50 - \$19.50/RSF
Full Service (Less Janitorial)

Jared Booth, SIOR, CCIM
Executive Vice President
+1 801 573 5959
jared.booth@colliers.com

Gwen Knight
Executive Vice President
+1 314 422 0467
gwen.knight@colliers.com

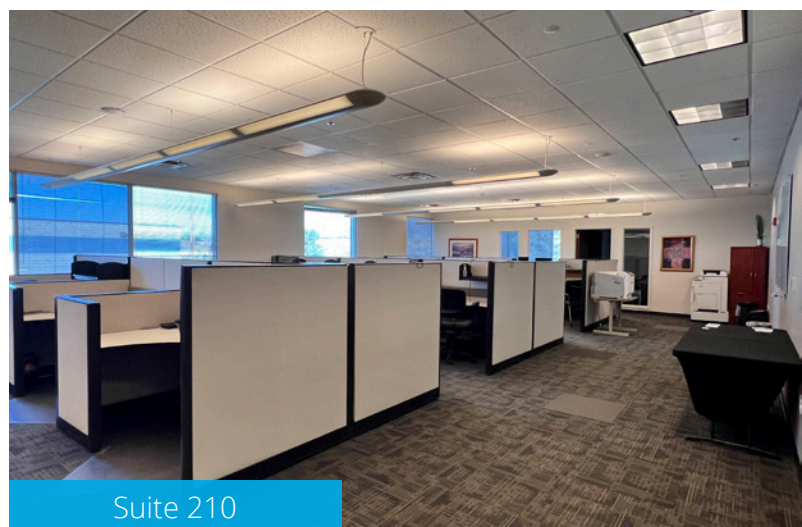
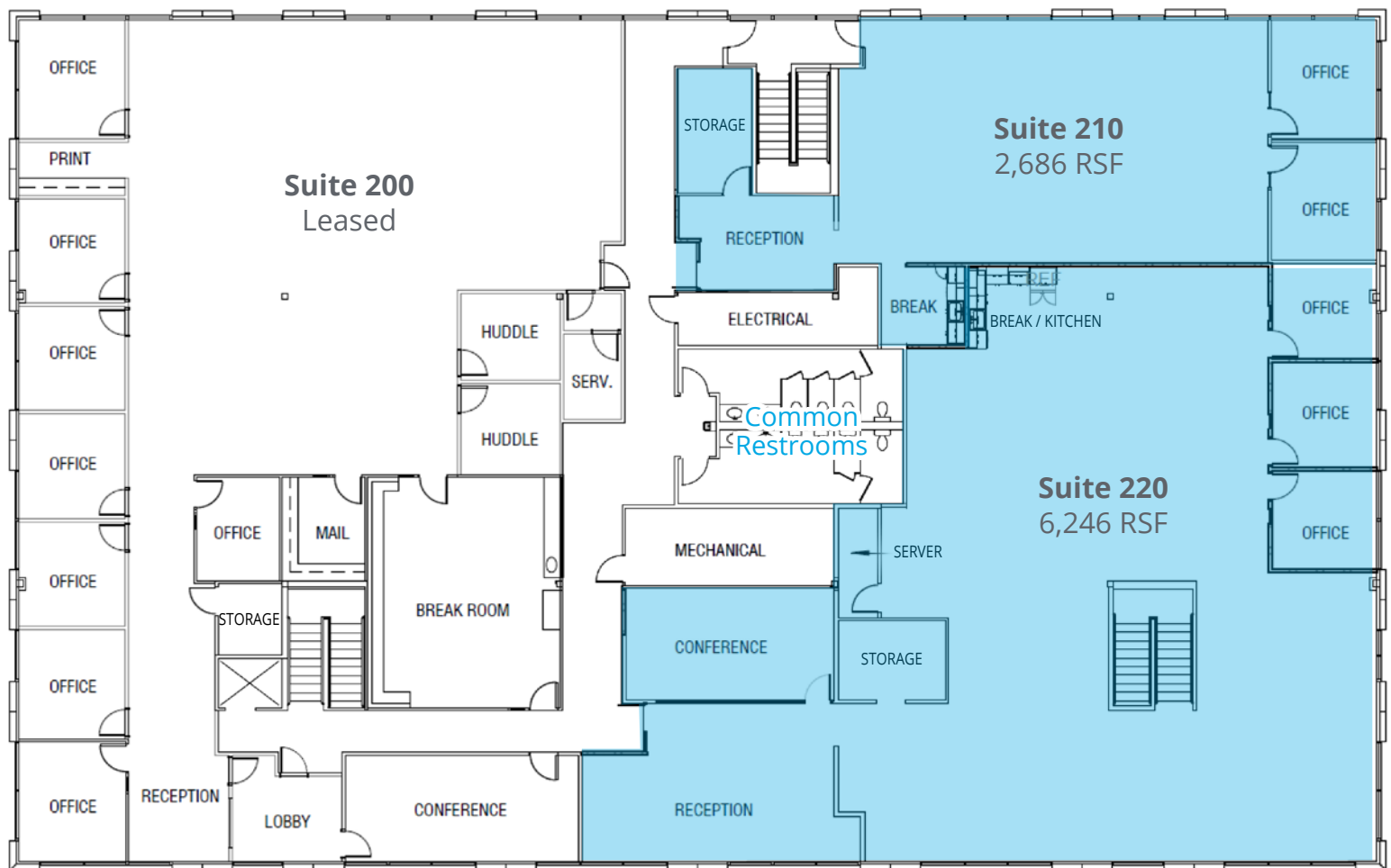
Colliers

6440 S. Millrock Dr., Suite 500
Salt Lake City, UT 84121
Main: +1 801 947 8300
colliers.com

Floor Plan

Building A: Suite 210
2nd Floor Suite 220

2,686 RSF Available
6,246 RSF Available



8851 S. Sandy Parkway | Sandy, UT

Danbury Corporate Park A



Suite 220



Suite 220



Suite 220



Suite 220

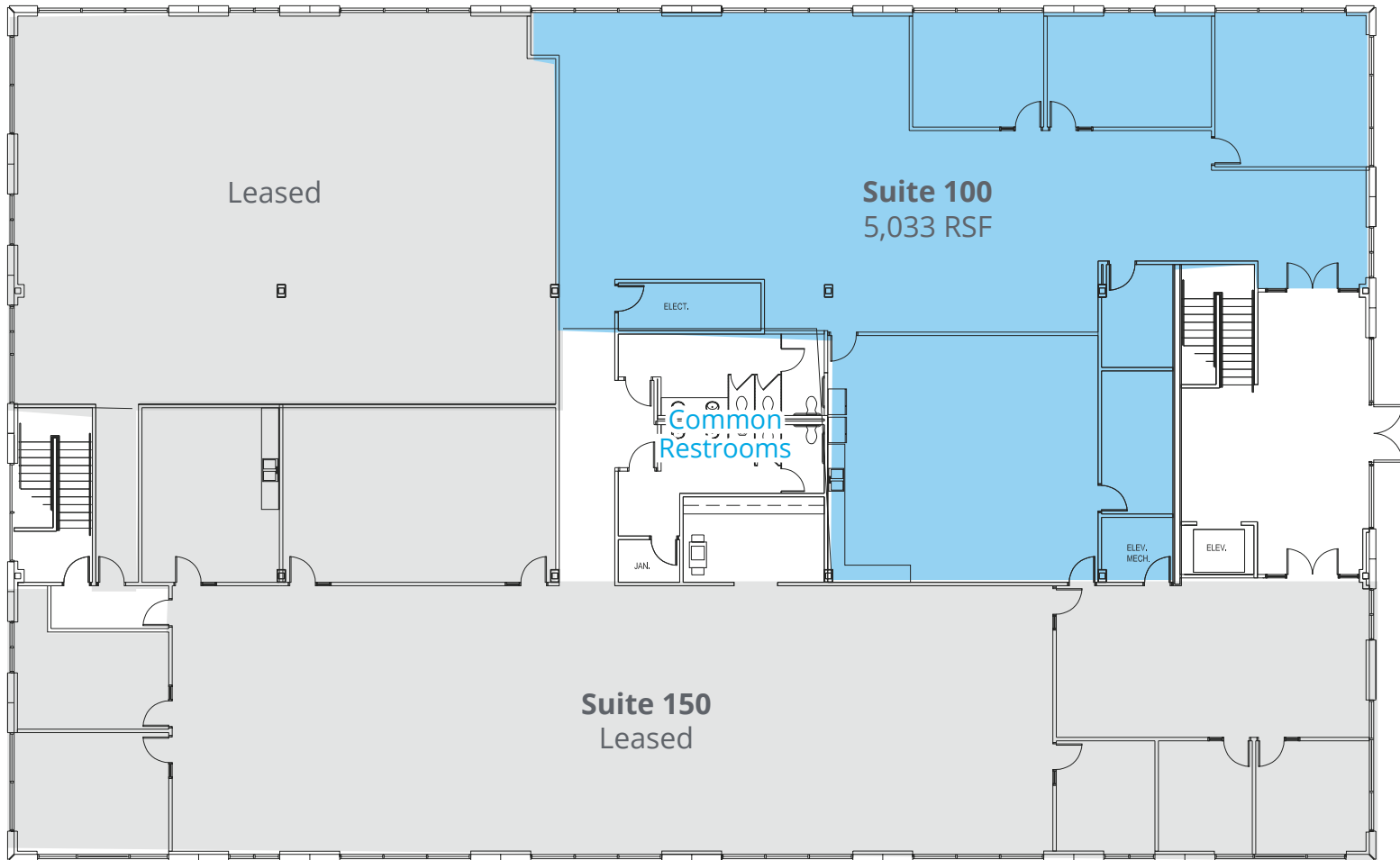


Building A

Floor Plan

Building B: Suite 100
1st Floor

5,033 RSF Available



8851 S. Sandy Parkway | Sandy, UT

Danbury Corporate Park B



Suite 100



Suite 100



Suite 100



Suite 100

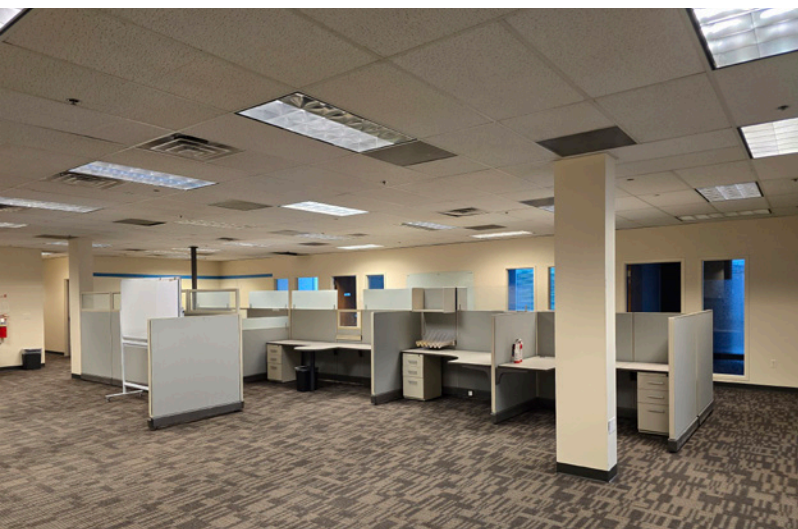
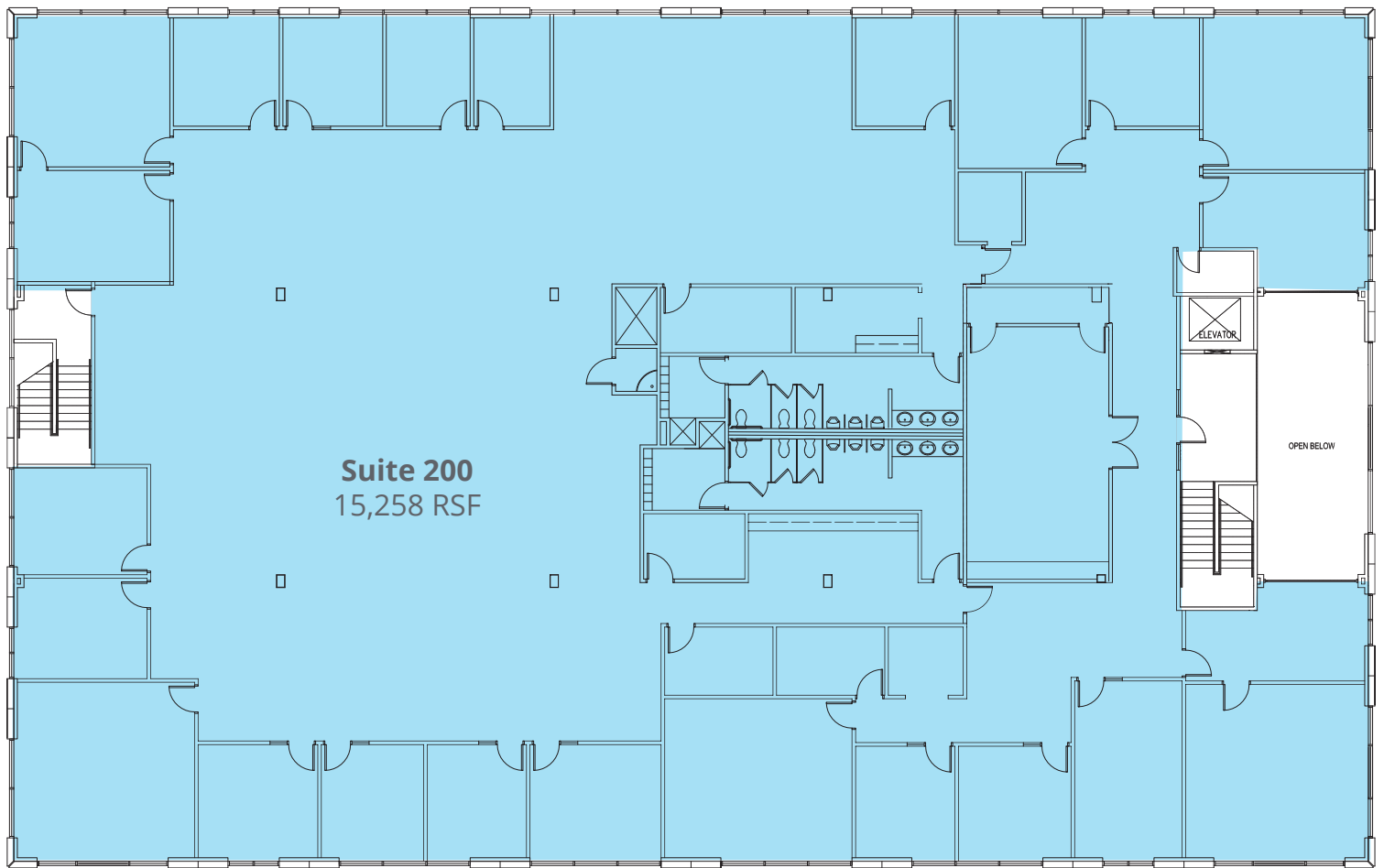


Building B

Floor Plan

Building C: Full Floor
2nd Floor

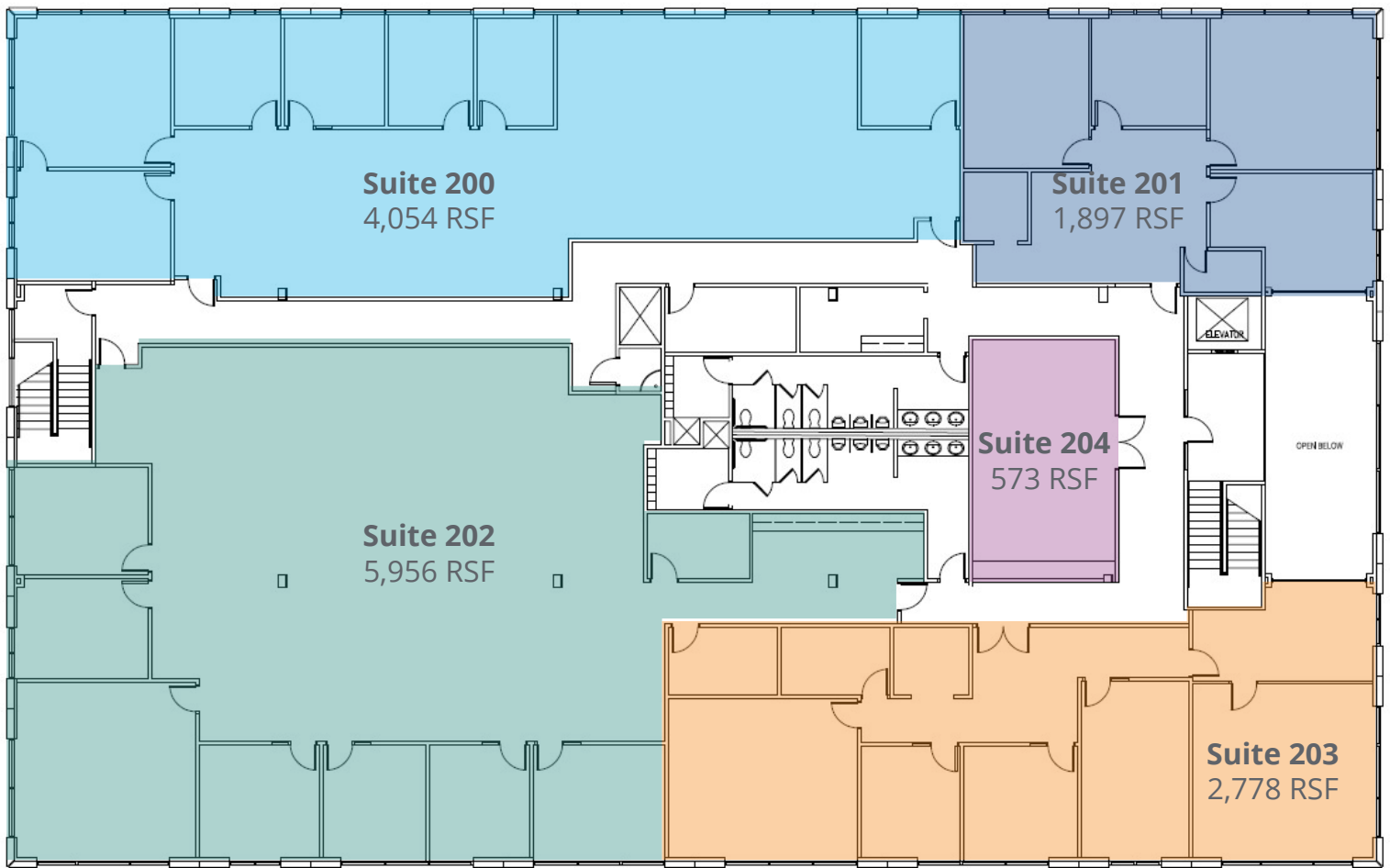
15,258 RSF Available



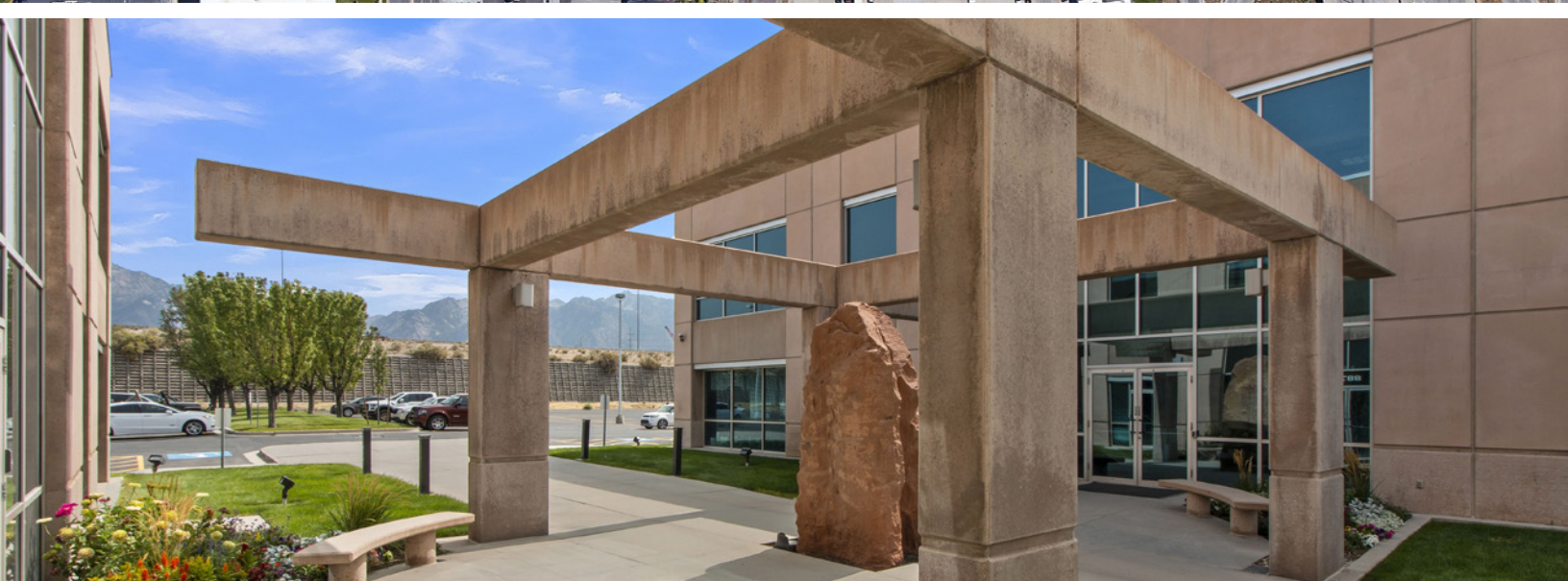
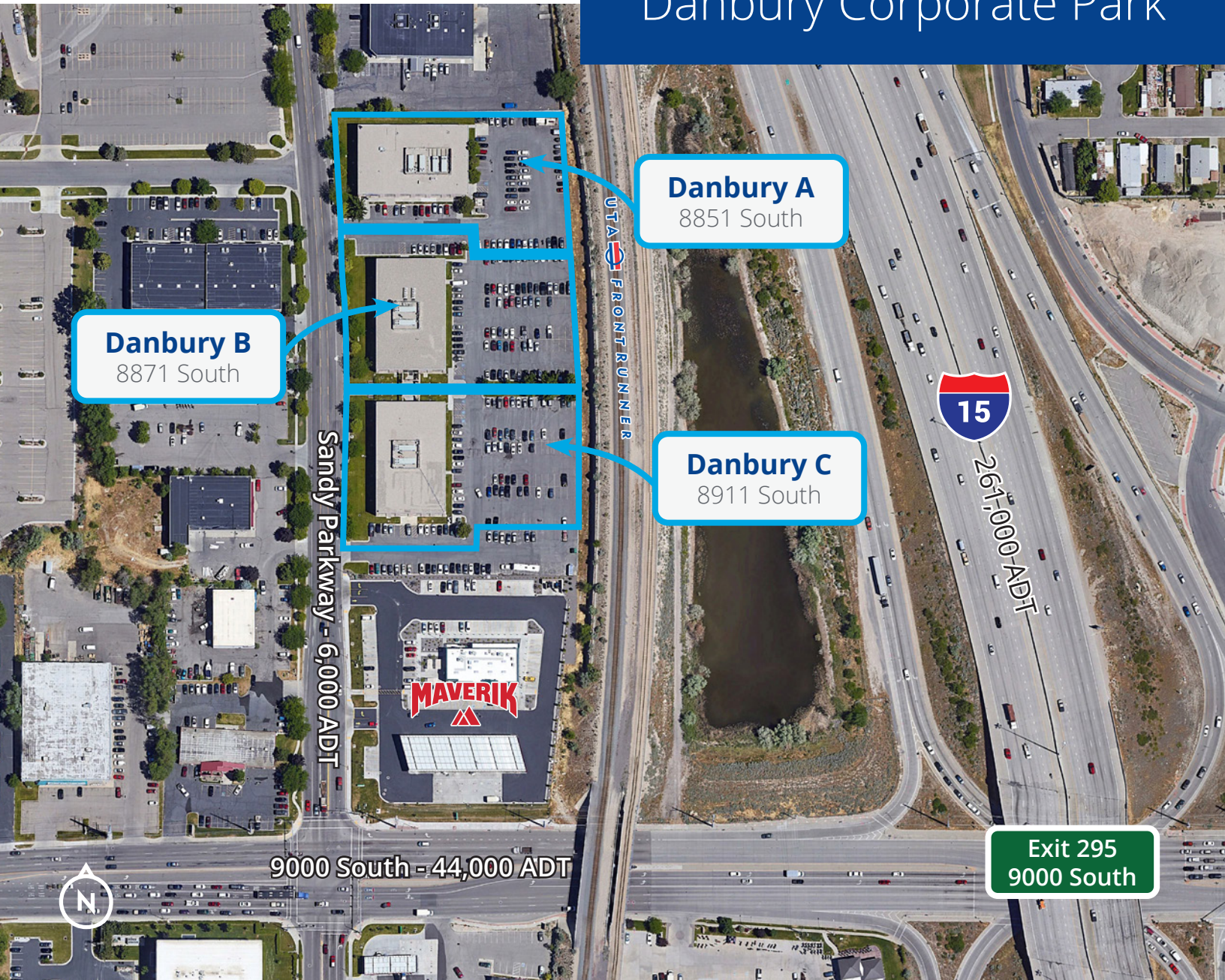
Multi-Tenant Floor Plan

Building C: Potential Multi-Tenant Configuration
2nd Floor

15,258 RSF Available



Danbury Corporate Park





8851 S. Sandy Parkway | Sandy, UT

Danbury Corporate Park





UTA  TRAX
Historic Sandy Station
9000 S.



9000 South

A

B

C

Sandy Parkway

Jared Booth, SIOR, CCIM
Executive Vice President
+1 801 573 5959
jared.booth@colliers.com

Gwen Knight
Executive Vice President
+1 314 422 0467
gwen.knight@colliers.com

Colliers
6440 S. Millrock Dr., Suite 500
Salt Lake City, UT 84121
Main: +1 801 947 8300
colliers.com



This document has been prepared by Colliers International for advertising and general information only. Colliers International makes no guarantees, representations or warranties of any kind, expressed or implied, regarding the information including, but not limited to, warranties of content, accuracy and reliability. Any interested party should undertake their own inquiries as to the accuracy of the information. Colliers International excludes unequivocally all inferred or implied terms, conditions and warranties arising out of this document and excludes all liability for loss and damages arising there from. This publication is the copyrighted property of Colliers International and/or its licensor(s). ©2024. All rights reserved.