

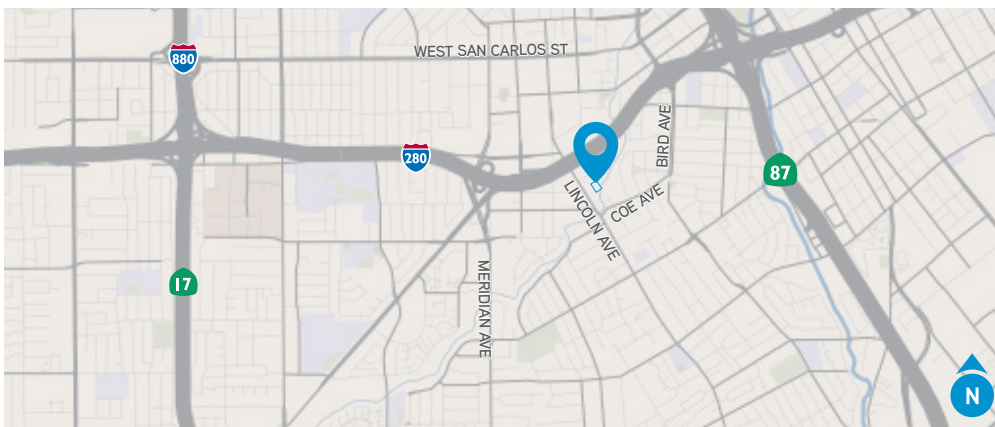


±14,705 SF

Industrial Space with Yard For Lease

970-980 Lonus Street, San Jose | CA

- ±0.99 Acre Parcel
- 3 Grade Level Doors
- 500 Amps, 240v, 3-Phase Power
- Secure Fenced Yard
- Downtown Willow Glen Location
- Excellent Access to Highways 280, 87, 880 and 101
- Available 6/1/2018
- \$1.35 Gross
- **Call to Tour – Do not Disturb Tenant**



Contact us:

Ryan Rosendin

Vice President

+1 408 282 3902

ryan.rosendin@colliers.com

Lic. No. CA-01883670

Michael Rosendin, SIOR, CCIM

Executive Vice President

+1 408 282 3900

michael.rosendin@colliers.com

Lic. No. CA-00826095



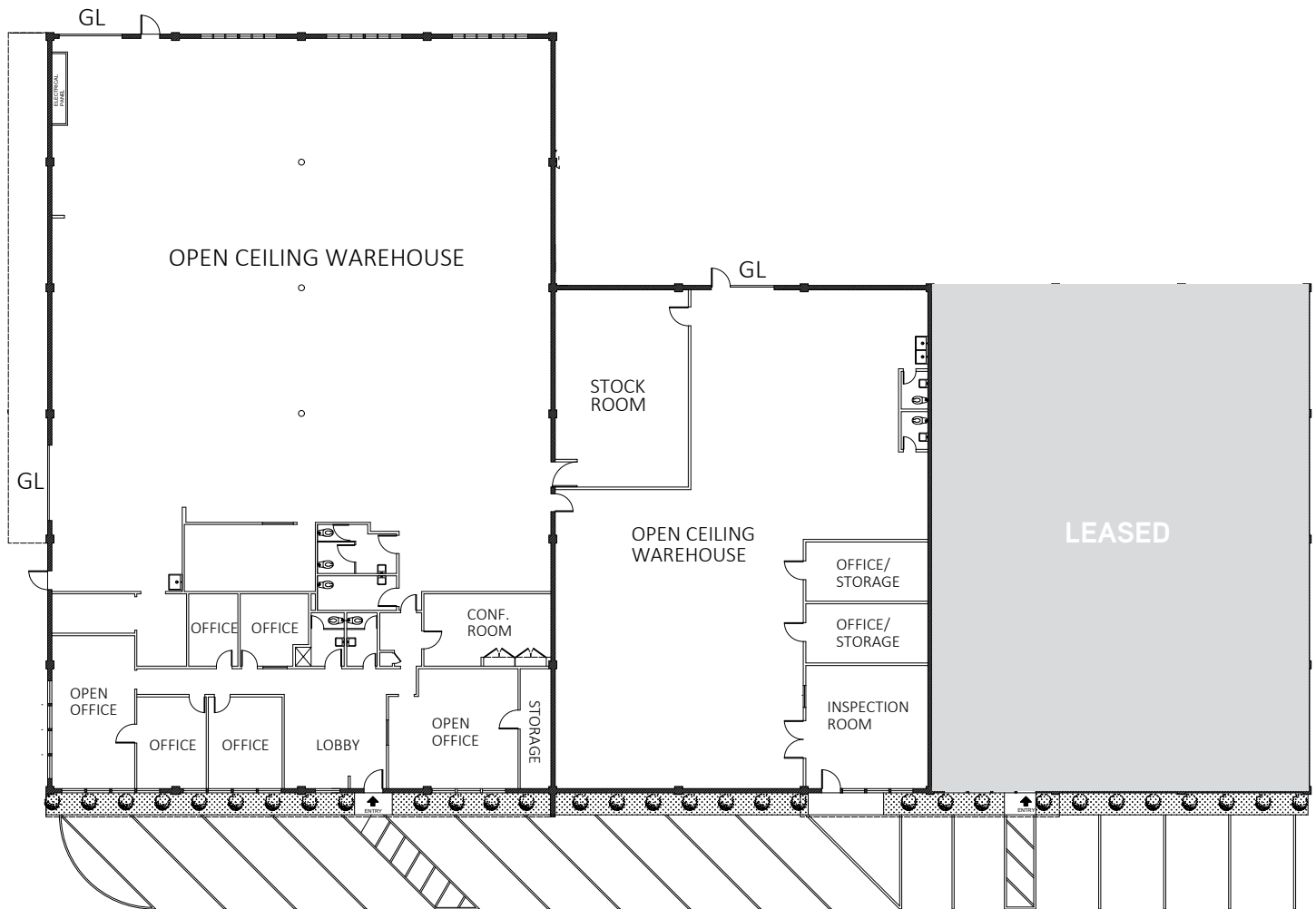
Colliers International

450 West Santa Clara Street

San Jose, CA 95113

P: +1 408 282 3800

Floor Plan



Ryan Rosendin
Vice President
+1 408 282 3902
ryan.rosendin@colliers.com
Lic. No. CA-01883670

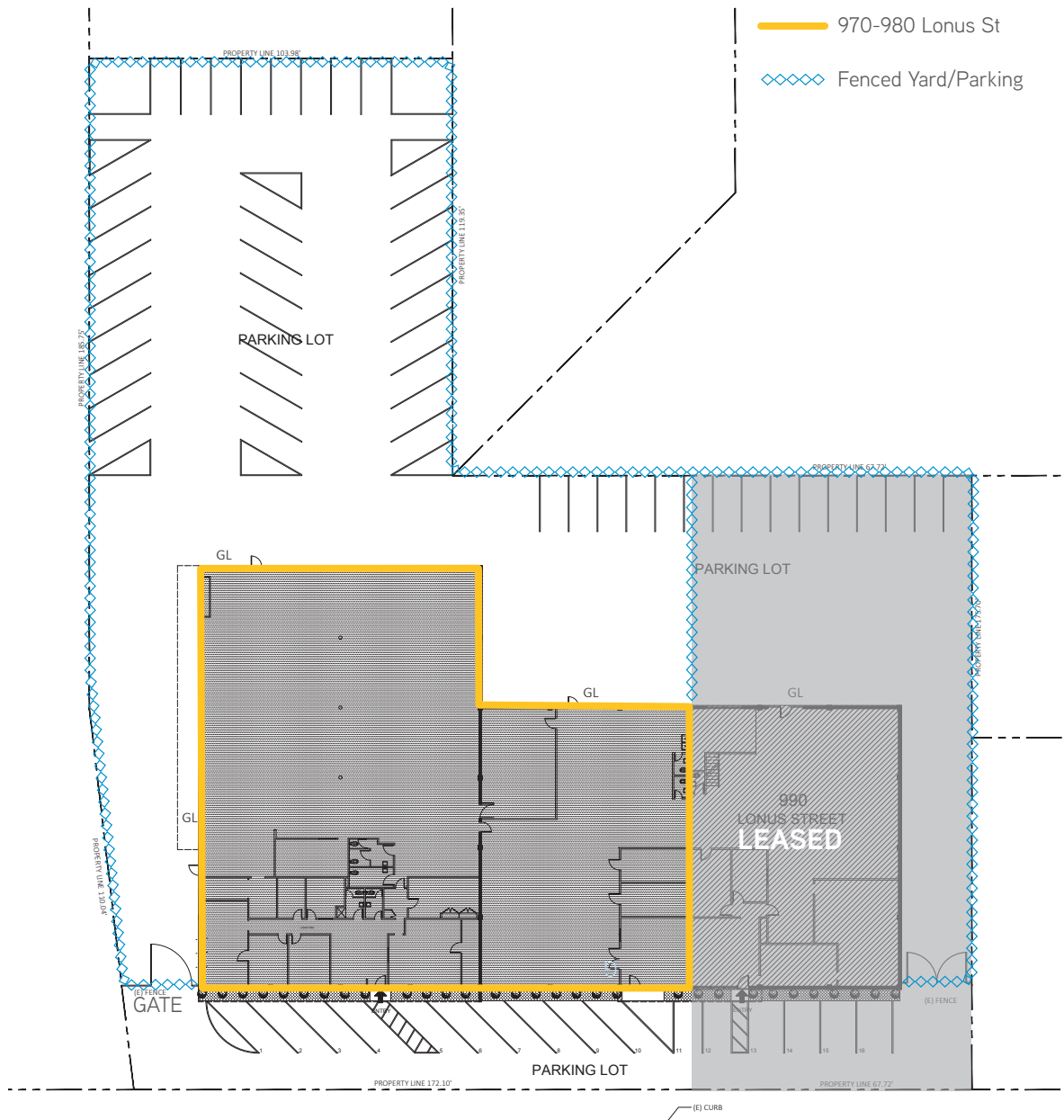
Michael Rosendin, SIOR, CCIM
Executive Vice President
+1 408 282 3900
michael.rosendin@colliers.com
Lic. No. CA-00826095

Colliers International
450 West Santa Clara Street
San Jose, CA 95113
P: +1 408 282 3800



970-980 Lonus St | San Jose | CA

Site Plan



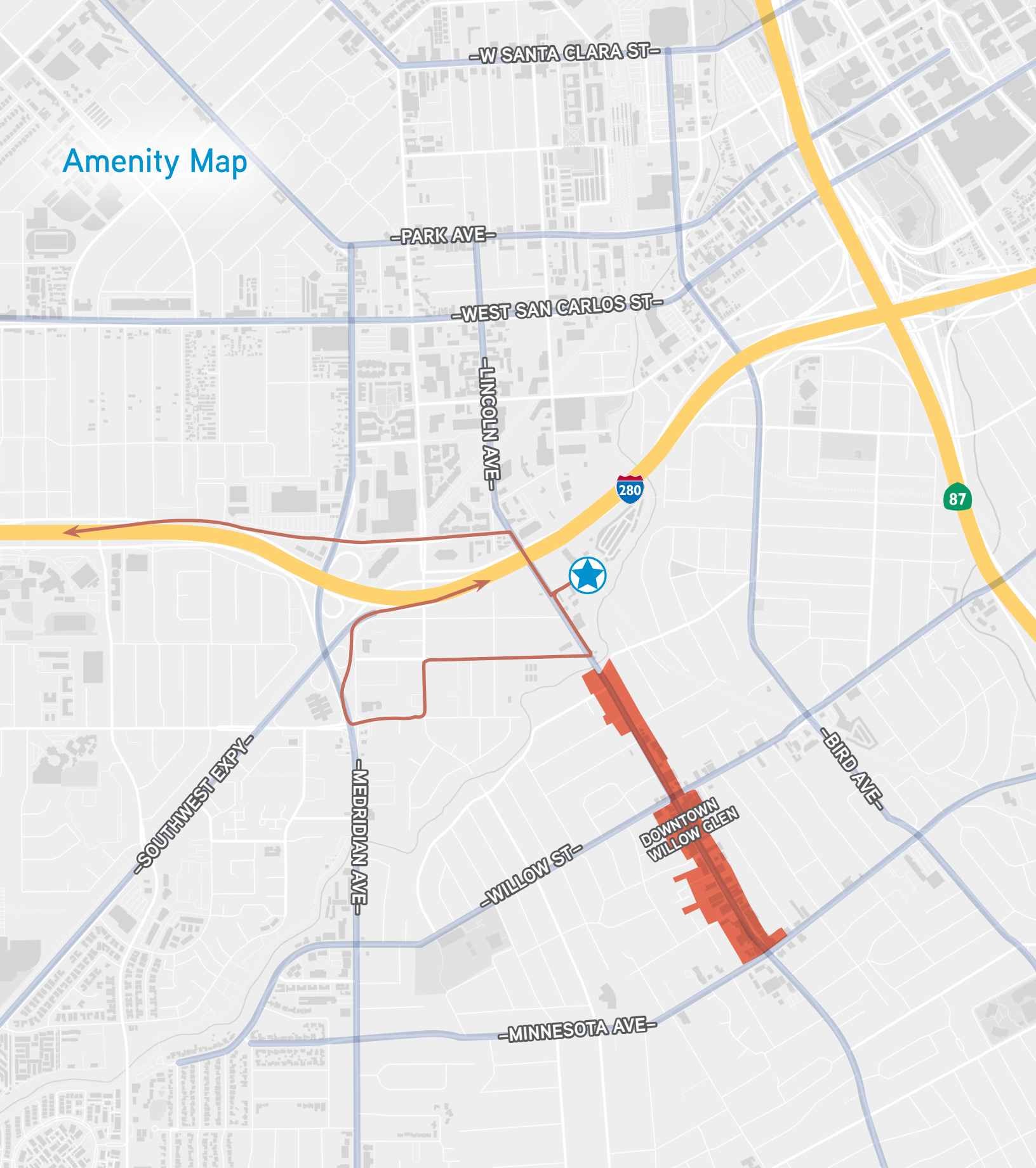
Ryan Rosendin
Vice President
+1 408 282 3902
ryan.rosendin@colliers.com
Lic. No. CA-01883670

Michael Rosendin, SIOR, CCIM
Executive Vice President
+1 408 282 3900
michael.rosendin@colliers.com
Lic. No. CA-00826095

Colliers International
450 West Santa Clara Street
San Jose, CA 95113
P: +1 408 282 3800



Amenity Map



Ryan Rosendin

Vice President
+1 408 282 3902
ryan.rosendin@colliers.com
Lic. No. CA-01883670

Michael Rosendin, SIOR, CCIM

Executive Vice President
+1 408 282 3900
michael.rosendin@colliers.com
Lic. No. CA-00826095

Colliers International
450 West Santa Clara Street
San Jose, CA 95113
P: +1 408 282 3800

