

# NORTHFIELD ROAD

North Randall, OH 44128

Colliers  
INTERNATIONAL



## Vacant Land For Sale or Lease

### Property Highlights

- › Parcels available: 5.02 & 2.8 Acres
- › Located adjacent to the 855,000 SF Amazon fulfillment center coming in 2018
- › The new fulfillment center will bring roughly 2,000+ jobs to North Randall
- › Parcels divisible
- › In-line opportunities
- › Easy access to I-480 & I-271
- › Densely-populated Cleveland submarket

CHRIS SEELIG  
+1 216 239 5073  
chris.seelig@colliers.com

COLLIERS INTERNATIONAL  
200 Public Square | Suite 1200  
Cleveland, OH 44114  
216 239 5060  
[www.colliers.com/ohio](http://www.colliers.com/ohio)

The information contained herein was obtained from sources believed reliable; however, Colliers International makes no guarantees, warranties, or representations as to the completeness or accuracy thereof. The presentation of this property is submitted subject to errors, omissions, change of price or conditions prior to sale or lease, or withdrawal without notice.

# NORTHFIELD ROAD

North Randall, OH 44128

Colliers  
INTERNATIONAL



CHRIS SEELIG  
+1 216 239 5073  
chris.seelig@colliers.com

COLLIERS INTERNATIONAL  
200 Public Square | Suite 1200  
Cleveland, OH 44114  
216 239 5060  
[www.colliers.com/ohio](http://www.colliers.com/ohio)

The information contained herein was obtained from sources believed reliable; however, Colliers International makes no guarantees, warranties, or representations as to the completeness or accuracy thereof. The presentation of this property is submitted subject to errors, omissions, change of price or conditions prior to sale or lease, or withdrawal without notice.



North Randall, OH 44128



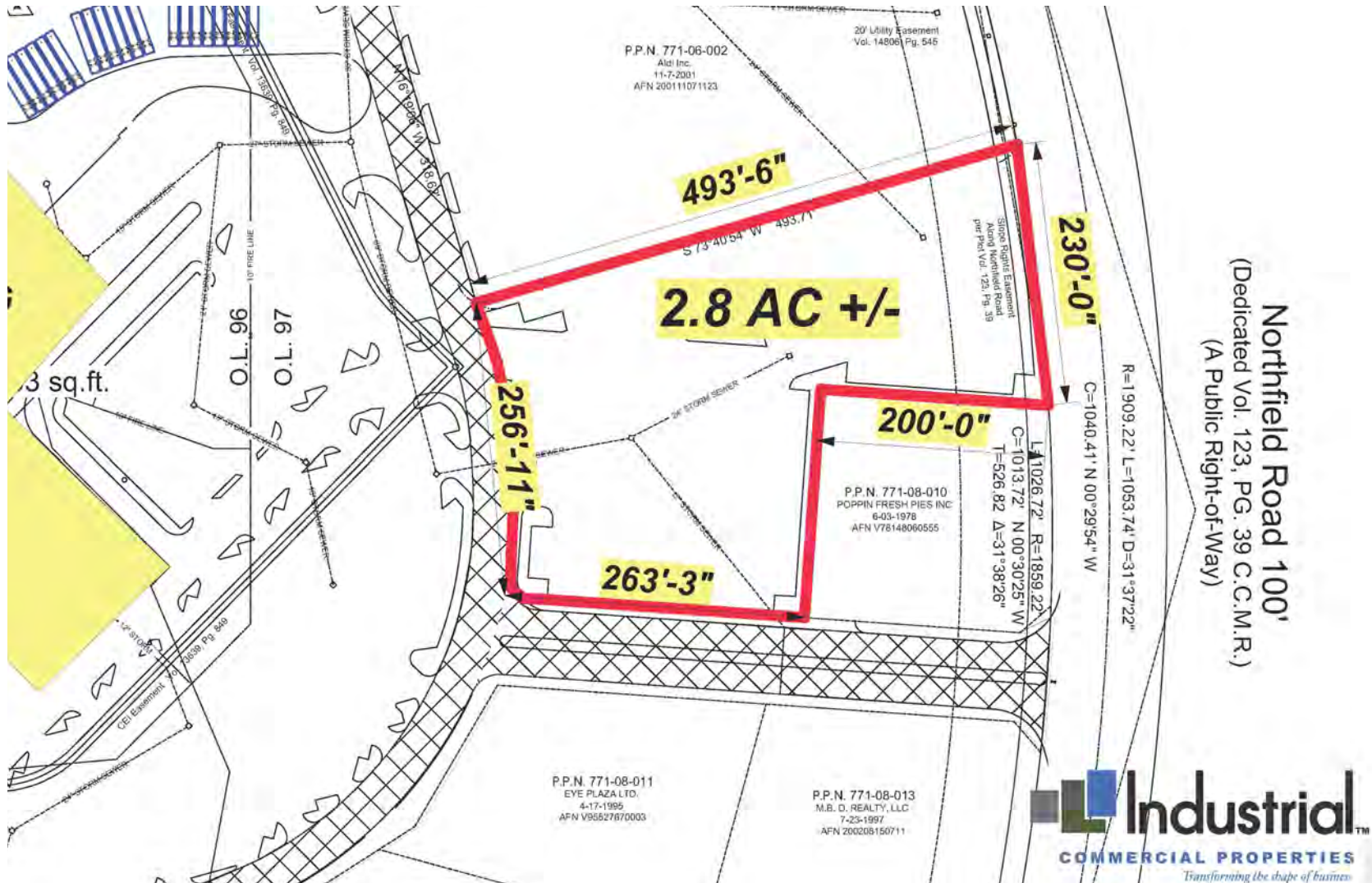
CHRIS SEELIG  
+1 216 239 5073  
chris.seelig@colliers.com

**COLLIERS INTERNATIONAL**  
200 Public Square | Suite 1200  
Cleveland, OH 44114  
216 239 5060  
[www.colliers.com/ohio](http://www.colliers.com/ohio)

The information contained herein was obtained from sources believed reliable; however, Colliers International makes no guarantees, warranties, or representations as to the completeness or accuracy thereof. The presentation of this property is submitted subject to errors, omissions, change of price or conditions prior to sale or lease, or withdrawal without notice.

# NORTHFIELD ROAD

North Randall, OH 44128



CHRIS SEELIG  
+1 216 239 5073  
chris.seelig@colliers.com

COLLIERS INTERNATIONAL  
200 Public Square | Suite 1200  
Cleveland, OH 44114  
216 239 5060  
[www.colliers.com/ohio](http://www.colliers.com/ohio)

The information contained herein was obtained from sources believed reliable; however, Colliers International makes no guarantees, warranties, or representations as to the completeness or accuracy thereof. The presentation of this property is submitted subject to errors, omissions, change of price or conditions prior to sale or lease, or withdrawal without notice.



# NORTHFIELD ROAD

North Randall, OH 44128

Colliers  
INTERNATIONAL



CHRIS SEELIG  
+1 216 239 5073  
chris.seelig@colliers.com

COLLIERS INTERNATIONAL  
200 Public Square | Suite 1200  
Cleveland, OH 44114  
216 239 5060  
[www.colliers.com/ohio](http://www.colliers.com/ohio)

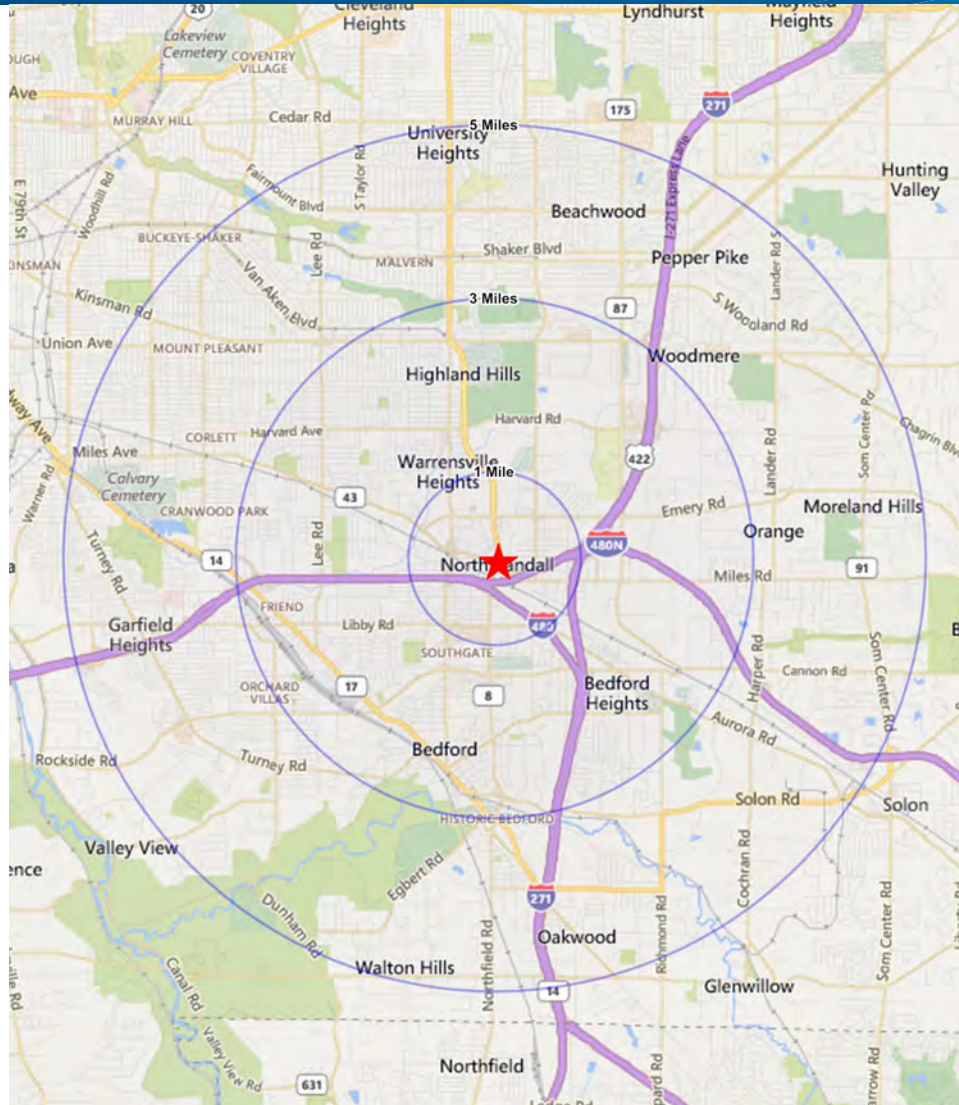
The information contained herein was obtained from sources believed reliable; however, Colliers International makes no guarantees, warranties, or representations as to the completeness or accuracy thereof. The presentation of this property is submitted subject to errors, omissions, change of price or conditions prior to sale or lease, or withdrawal without notice.



# NORTHFIELD ROAD

North Randall, OH 44128

**Colliers**  
INTERNATIONAL



4600 Northfield Rd North Randall, OH		1 Mile	3 Miles	5 Miles
POPULATION	2016 Estimated Population	8,209	85,122	229,285
	2021 Projected Population	8,074	83,488	226,446
	2010 Census Population	8,470	88,198	234,794
	2000 Census Population	9,248	96,156	264,723
	Projected Annual Growth 2016 to 2021	-0.3%	-0.4%	-0.2%
	Historical Annual Growth 2000 to 2016	-0.7%	-0.7%	-0.8%
HOUSEHOLDS	2016 Median Age	39.5	41.2	40.6
	2016 Estimated Households	3,817	37,808	89,559
	2021 Projected Households	3,871	38,320	101,655
	2010 Census Households	3,828	37,953	88,765
	2000 Census Households	3,982	39,659	106,802
	Projected Annual Growth 2016 to 2021	0.3%	0.3%	0.4%
RACE AND ETHNICITY	Historical Annual Growth 2000 to 2016	-0.3%	-0.3%	-0.4%
	2016 Estimated White	5.4%	23.6%	37.6%
	2016 Estimated Black or African American	91.3%	71.8%	57.3%
	2016 Estimated Asian or Pacific Islander	0.6%	1.6%	2.5%
	2016 Estimated American Indian or Native Alaskan	0.2%	0.2%	0.1%
	2016 Estimated Other Races	2.5%	2.8%	2.5%
INCOME	2016 Estimated Hispanic	1.5%	2.0%	2.0%
	2016 Estimated Average Household Income	\$40,185	\$60,161	\$72,910
	2016 Estimated Median Household Income	\$34,141	\$47,169	\$55,613
EDUCATION (AGE 25+)	2016 Estimated Per Capita Income	\$18,933	\$26,945	\$31,825
	2016 Estimated Elementary (Grade Level 0 to 8)	3.3%	2.6%	2.5%
	2016 Estimated Some High School (Grade Level 9 to 11)	8.9%	8.8%	8.8%
	2016 Estimated High School Graduate	35.6%	29.3%	27.7%
	2016 Estimated Some College	26.4%	25.0%	22.0%
	2016 Estimated Associates Degree Only	10.8%	7.4%	7.0%
BUSINESS	2016 Estimated Bachelors Degree Only	10.0%	14.9%	16.4%
	2016 Estimated Graduate Degree	5.1%	12.0%	15.6%
	2016 Estimated Total Businesses	358	5,499	11,253
	2016 Estimated Total Employees	7,322	71,139	143,664
	2016 Estimated Employee Population per Business	20.5	12.9	12.8
	2016 Estimated Residential Population per Business	22.9	15.5	20.4

CHRIS SEELIG  
+1 216 239 5073  
chris.seelig@colliers.com

**COLLIERS INTERNATIONAL**  
200 Public Square | Suite 1200  
Cleveland, OH 44114  
216 239 5060  
[www.colliers.com/ohio](http://www.colliers.com/ohio)

The information contained herein was obtained from sources believed reliable; however, Colliers International makes no guarantees, warranties, or representations as to the completeness or accuracy thereof. The presentation of this property is submitted subject to errors, omissions, change of price or conditions prior to sale or lease, or withdrawal without notice.