

FOR LEASE > OFFICE BUILDING

Concord Sierra

5485 KIETZKE LANE | RENO | NEVADA



AVAILABLE SPACE: Entire Building – 3,000 SF

BUILDING FEATURES:

- > Rare two story 3,000 square foot office building available for lease in the Meadowood Submarket
- > Located in the Mountain View Corporate Center at the roundabout at Kietzke Lane near Neil Road
- > High-end finishes and outstanding views
- > Covered parking at the property with shared parking throughout the office park

LEASE RATE: \$6,750 Per Month NNN

(Cam fees estimated to be \$1,500 per month plus gas/electric charges)

For more information,
please contact:

Reno Office Services

MELISSA MOLYNEAUX, SIOR, CCIM

Senior Vice President

Executive Managing Director

+1 775 823 4674 DIRECT

+1 775 762 7990 CELL

Melissa.Molyneaux@colliers.com

The information furnished has been obtained from sources we deem reliable and is submitted subject to errors, omissions and changes. Although Colliers Nevada, LLC has no reason to doubt its accuracy, we do not guarantee it. All information should be verified by the recipient prior to lease, purchase, exchange or execution of legal documents.

Colliers International
100 W. Liberty St., Suite 740
Reno, Nevada 89501
P: +1 775.823.9666 | F: +1 775.823.4699
www.colliers.com/reno

FOR LEASE > OFFICE BUILDING

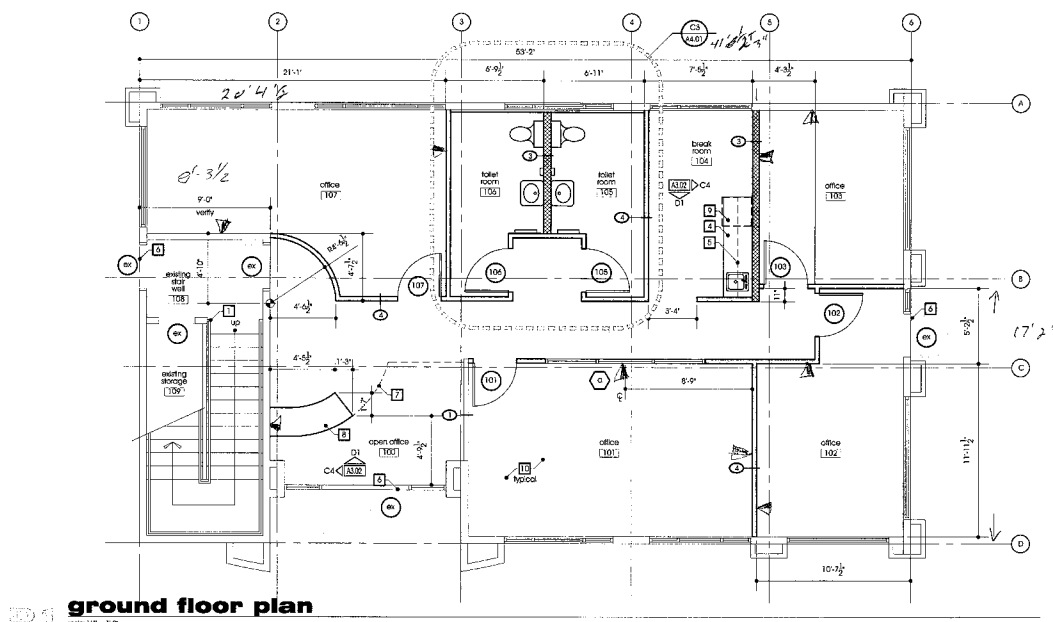
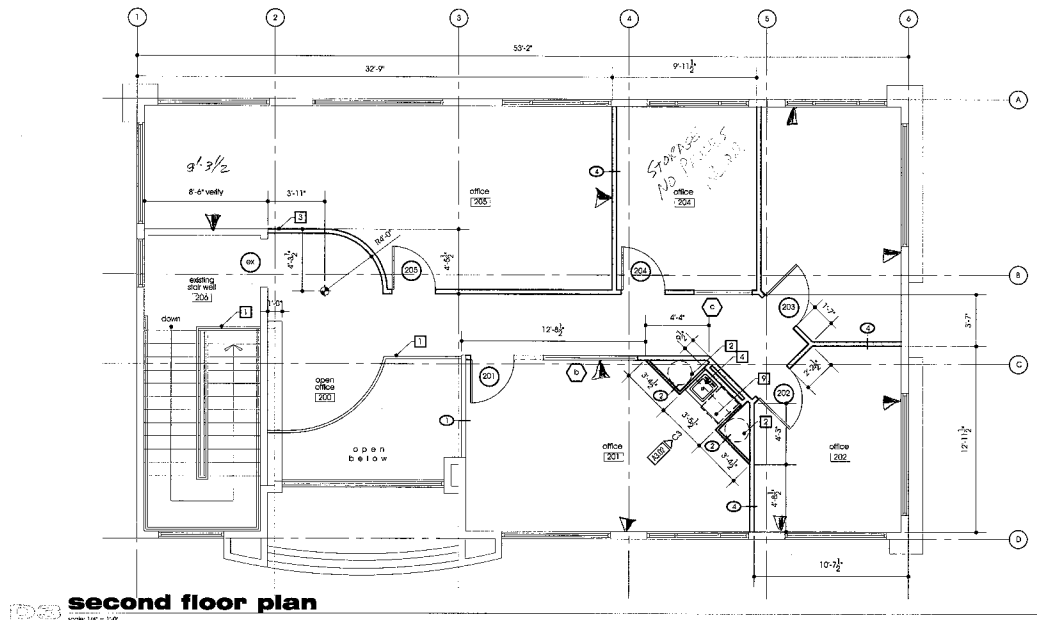
Concord Sierra

5485 KIETZKE LANE | RENO | NEVADA



SITE PLAN

AVAILABLE SPACE: Entire Building – 3,000 SF



The information furnished has been obtained from sources we deem reliable and is submitted subject to errors, omissions and changes. Although Colliers Nevada, LLC has no reason to doubt its accuracy, we do not guarantee it. All information should be verified by the recipient prior to lease, purchase, exchange or execution of legal documents.

Colliers International
100 W. Liberty St., Suite 740
Reno, Nevada 89501
P: +1 775.823.9666 | F: +1 775.823.4699
www.colliers.com/reno

FOR LEASE > OFFICE BUILDING

Concord Sierra

5485 KIETZKE LANE | RENO | NEVADA



AERIAL



For more information,
please contact:

Reno Office Services

MELISSA MOLYNEAUX, SIOR, CCIM

Senior Vice President

Executive Managing Director

+1 775 823 4674 DIRECT

+1 775 762 7990 CELL

Melissa.Molyneaux@colliers.com

The information furnished has been obtained from sources we deem reliable and is submitted subject to errors, omissions and changes. Although Colliers Nevada, LLC has no reason to doubt its accuracy, we do not guarantee it. All information should be verified by the recipient prior to lease, purchase, exchange or execution of legal documents.

Colliers International
100 W. Liberty St., Suite 740
Reno, Nevada 89501
P: +1 775.823.9666 | F: +1 775.823.4699
www.colliers.com/reno