

FOR SUBLEASE > OFFICE SPACE



Corporate Woods Bldg 84

10801 MASTIN, SUITE 580, OVERLAND PARK, KANSAS



Property Features

- > 11,262 RSF available on fifth floor
- > Double door glass entry close to the elevator lobby
- > Most of the furniture is available
- > Prestigious Class A building
- > Term through August 31, 2020
- > Well below market rate of \$21.00 PRSF

Contact Us

MATT STOVER
+1 816 556 1116
KANSAS CITY, MO
matt.stover@colliers.com

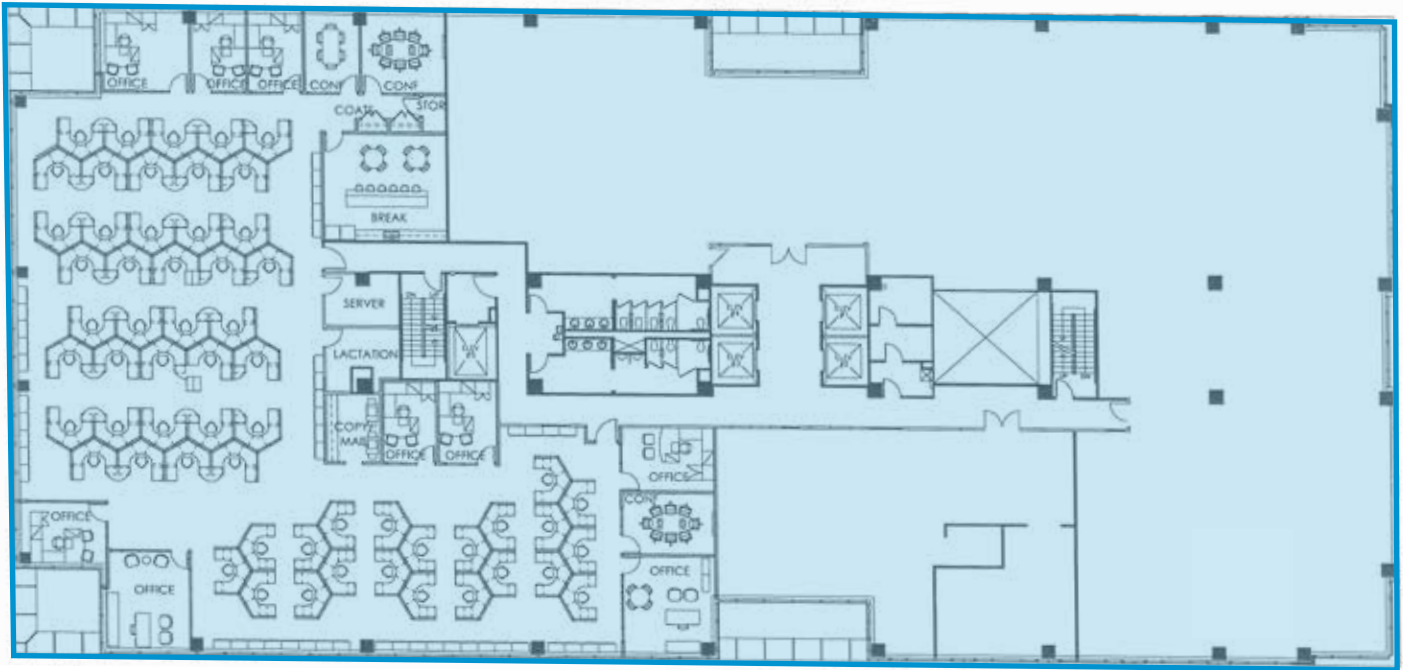
This document has been prepared by Colliers International for advertising and general information only. Colliers International makes no guarantees, representations or warranties of any kind, expressed or implied, regarding the information including, but not limited to, warranties of content, accuracy and reliability. Any interested party should undertake their own inquiries as to the accuracy of the information. Colliers International excludes unequivocally all inferred or implied terms, conditions and warranties arising out of this document and excludes all liability for loss and damages arising there from. This publication is the copyrighted property of Colliers International and/or its licensor(s). © 2018. All rights reserved.

COLLIERS INTERNATIONAL
4520 Main Street, Suite 1000
Kansas City, MO 64111
www.colliers.com

Corporate Woods Bldg 84

FLOOR PLAN

5th floor - 11,262 RSF



MATT STOVER
+1 816 556 1116
KANSAS CITY, MO
matt.stover@colliers.com

