



CROWN CENTER

1451 W Cypress Creek Blvd, Fort Lauderdale, FL 33309



Sal Bonsignore, SIOR, CCIM
Senior Vice President
+1 954 652 4608
sal.bonsignore@colliers.com

Ronald Schagrin
Vice President
+1 954 214 2279
ronald.schagrin@colliers.com

Property Managed By:



Crown Center

Crown Center is an uptown, low-rise green office campus situated on 24 acres fronting Cypress Creek Road in Fort Lauderdale, Florida. The campus consists of six buildings and is home to several notable corporate tenants. Strategically located just west of Interstate-95, Crown Center is surrounded by restaurants, hotels, and across from the Fort Lauderdale Executive Airport, which is the eighth-busiest General Aviation center in the United States.

The campus offers numerous amenities such as an on-site cafe, abundant parking, electric vehicle charging stations and a professional on-site property management team that ensures all tenants and the property receive the utmost attention.



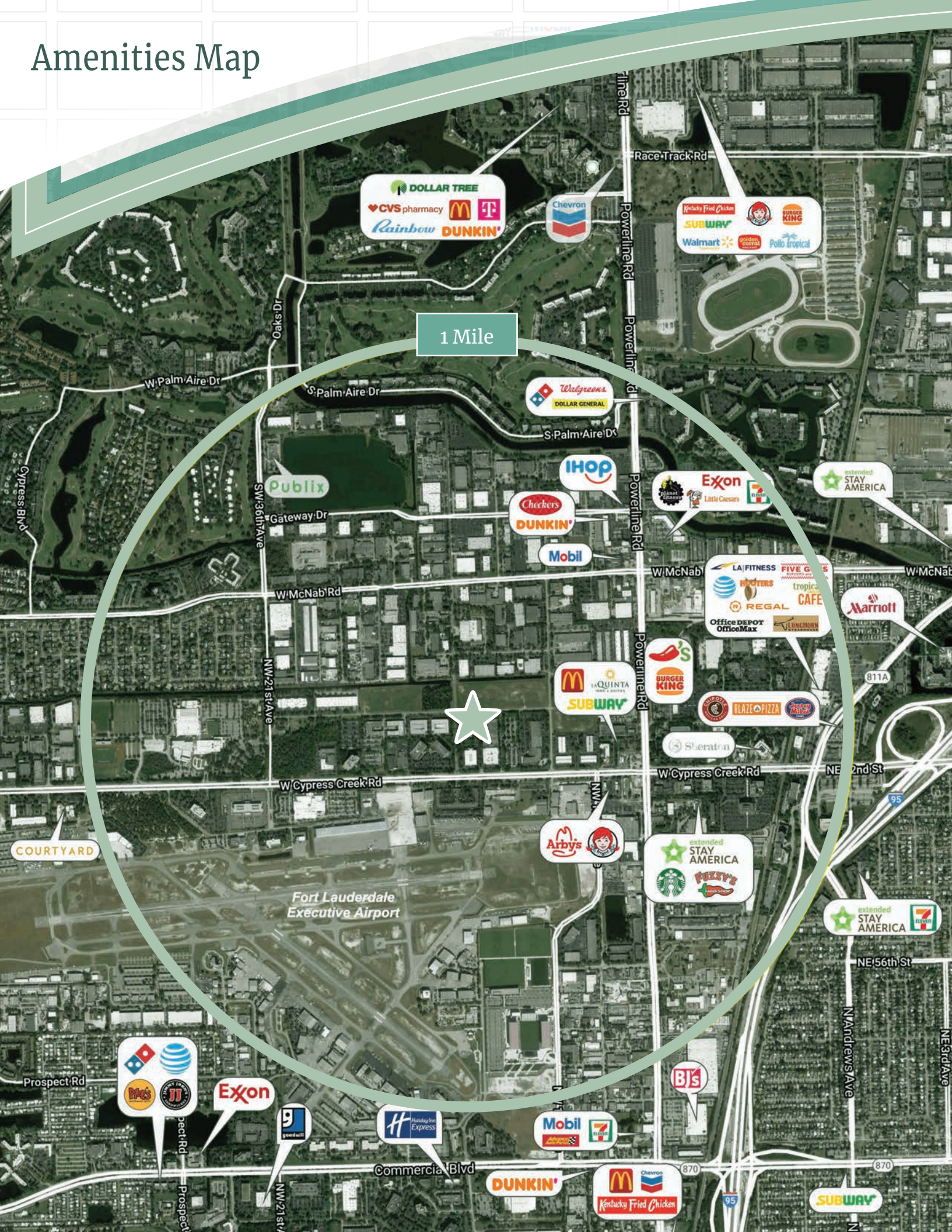
Property Overview

Features

- Class A tenant finishes
- On campus cafe
- Quick and convenient access to I-95 and Florida's Turnpike
- Separately metered electric
- LEED certified (Existing Building: Operation & Maintenance)
- Key card (24/7) access
- On-site Property Management
- Impact resistant glass

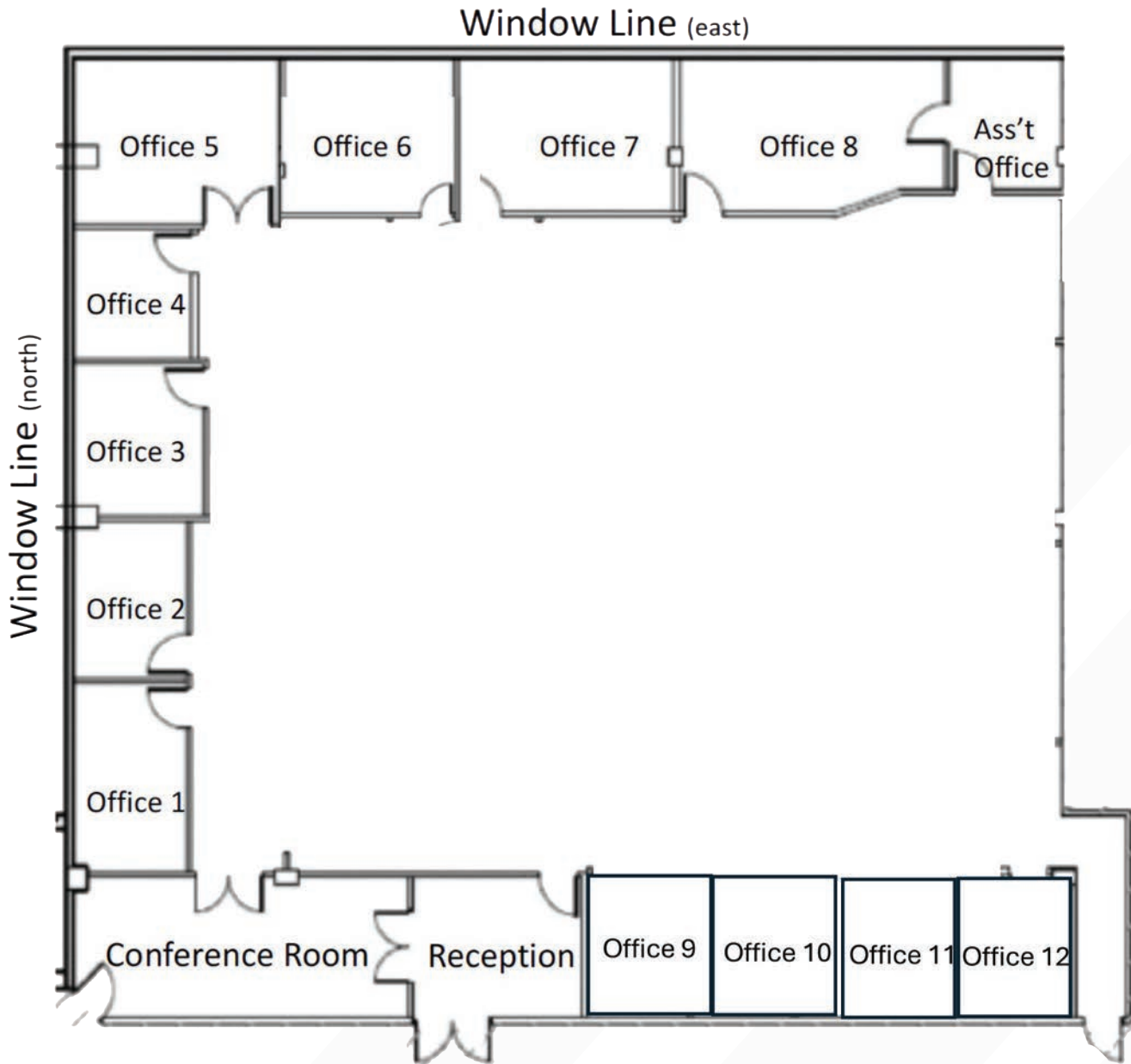
Building Size	96,000 SF
Availability	Suite 200 - 6,841 SF <i>(Page 4)</i> Suite 212 - 5,911 SF <i>(Page 5)</i>
Year Built	1986; Renovated 2001
Owner	Fort Lauderdale Crown Center, LLC
Common Area Factor	9.8%
Parking	4.00/1,000 SF
Rental Rate	\$17.00 PSF, NNN
2024 OPEX	\$12.46 +electric

Amenities Map



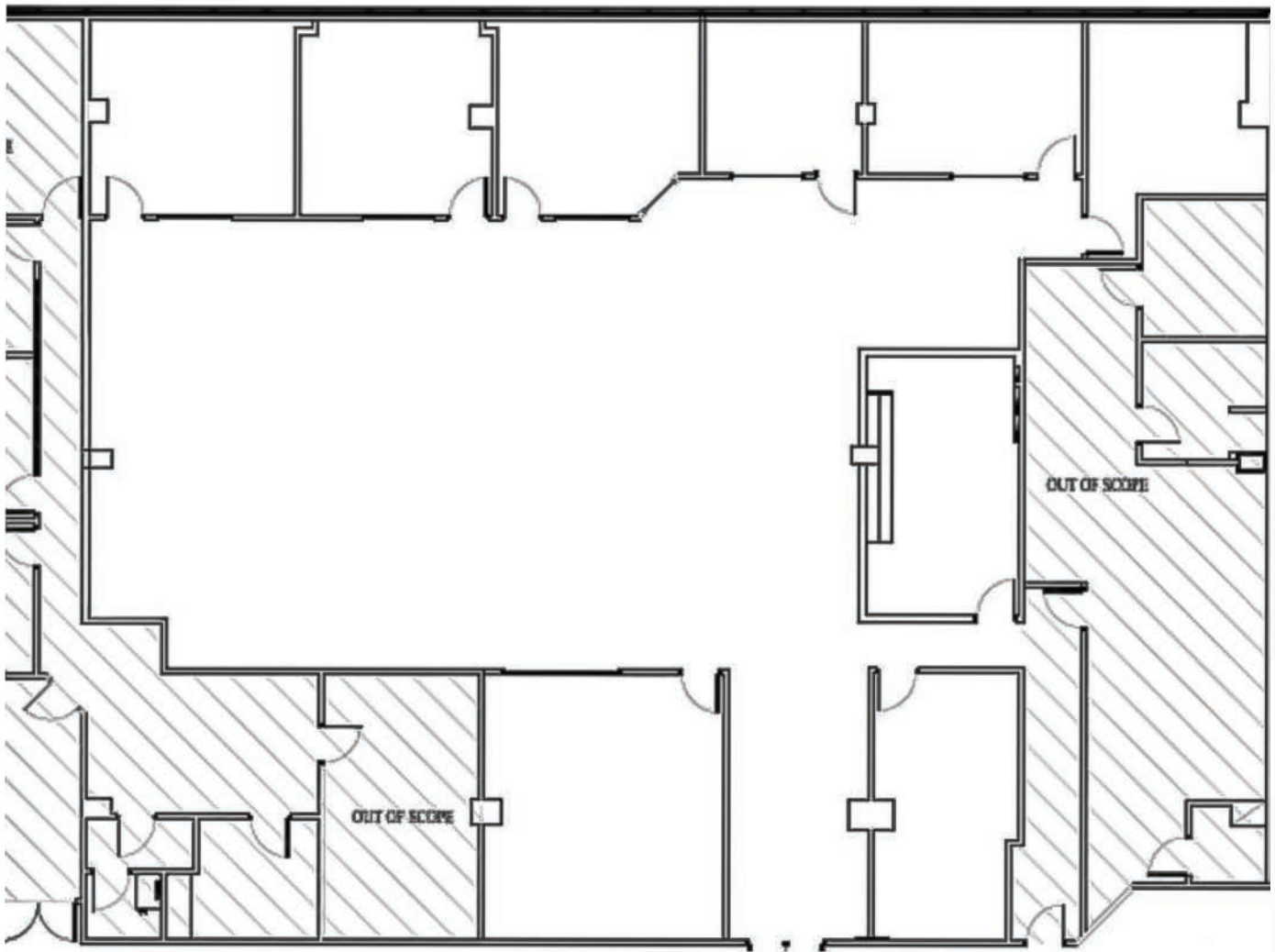
Floor Plan

Suite #200 | 6,841 SF



Floor Plan

Suite #212 | 5,911 SF





[VIEW WEBSITE](#)



Sal Bonsignore, SIOR, CCIM
Senior Vice President
+1 954 652 4608
sal.bonsignore@colliers.com

Ronald Schagrin
Vice President
+1 954 214 2279
ronald.schagrin@colliers.com

Property Managed By:



Colliers International Florida, LLC, 200 E Broward Blvd, Suite 120, Fort Lauderdale, FL 33301

Copyright © 2024 Colliers International Florida, LLC. The information contained herein has been obtained from sources deemed reliable. While every reasonable effort has been made to ensure its accuracy, we cannot guarantee it. No responsibility is assumed for any inaccuracies. Readers are encouraged to consult their professional advisors prior to acting on any of the material contained in this report.

Rev: 04.22.24