

AVAILABLE FOR LEASE



SCOTTSDALE AIRPARK

15685 N. GREENWAY HAYDEN LOOP | SCOTTSDALE, AZ 85260

5,542 SF Showroom | Warehouse (End Cap) - 100% Air Conditioned
\$1.00 PSF NNN | Month (\$5,542/Month plus NNN charges)



Suite 100A - ±5,542 PSF

- Showroom with Built-in Reception Desk, Generous Lobby Area and Tile Floor that can be easily converted to accommodate a larger showroom.
- Frontage on Greenway Hayden Loop.
- Two Larger Executive Offices and Six Private Offices.
- Large Break Room with Sink, Cabinets, etc.
- Two Bull Pen Areas (one small, one large).
- Four Restrooms: One with Shower off Lobby-Showroom area; Two Men's and Women's Restrooms for Office Staff; One in Bullpen area.
- 100% A/C Warehouse with Approximately 16' Clearance Height, and 10'x12' door at Rear of End Cap Suite.
- Exterior Loading 100% Cement Apron for Deliveries, Forklift Loading, etc.
- Parking Ratio: 2.6:1,000.
- ±20,000 RSF Building Constructed in 1996.
- I-1 Zoning, City of Scottsdale.
- NNN Approximately \$.31 PSF/per month.

JIM KEELEY
FOUNDING PARTNER | SCOTTSDALE OFFICE
DESIGNATED BROKER
DIR 480 655 3300 | MOB 602 721 6540
jim.keeley@colliers.com

COLLIERS INTERNATIONAL
8360 E. Raintree Dr. | Suite 130
Scottsdale, AZ 85260
www.colliers.com/greaterphoenix

This document/email has been prepared by Colliers International for advertising and general information only. Colliers International makes no guarantees, representations or warranties of any kind, expressed or implied, regarding the information including, but not limited to, warranties of content, accuracy and reliability. Any interested party should undertake their own inquiries as to the accuracy of the information. Colliers International excludes unequivocally all inferred or implied terms, conditions and warranties arising out of this document and excludes all liability for loss and damages arising there from. This publication is the copyrighted property of Colliers International and/or its licensor(s). © 2018. All rights reserved.

AVAILABLE FOR LEASE



SCOTTSDALE AIRPARK

15685 N. GREENWAY HAYDEN LOOP | SUITE 100A | 5,542 RSF



JIM KEELEY
FOUNDING PARTNER | SCOTTSDALE OFFICE
DESIGNATED BROKER
DIR 480 655 3300 | MOB 602 721 6540
jim.keeley@colliers.com

COLLIERS INTERNATIONAL
8360 E. Raintree Dr. | Suite 130
Scottsdale, AZ 85260
www.colliers.com/greaterphoenix

AVAILABLE FOR LEASE



SCOTTSDALE AIRPARK

15685 N. GREENWAY HAYDEN LOOP | SCOTTSDALE, AZ 85260



AREA AMENITIES

- Close proximity to office and retail properties such as: Kierland, Scottsdale Quarter, The Promenade, Westin Kierland and Scottsdale Princess Resorts.
- Designed to accommodate office, flex and showroom requirements.
- 1 mile from Frank Lloyd Wright Boulevard and Loop 101 Interchange & Scottsdale Airport.
- Located directly on Greenway Hayden Loop.

JIM KEELEY
FOUNDING PARTNER | SCOTTSDALE OFFICE
DESIGNATED BROKER
DIR 480 655 3300 | MOB 602 721 6540
jim.keeley@colliers.com

COLLIERS INTERNATIONAL
8360 E. Raintree Dr. | Suite 130
Scottsdale, AZ 85260
www.colliers.com/greaterphoenix

AVAILABLE FOR LEASE



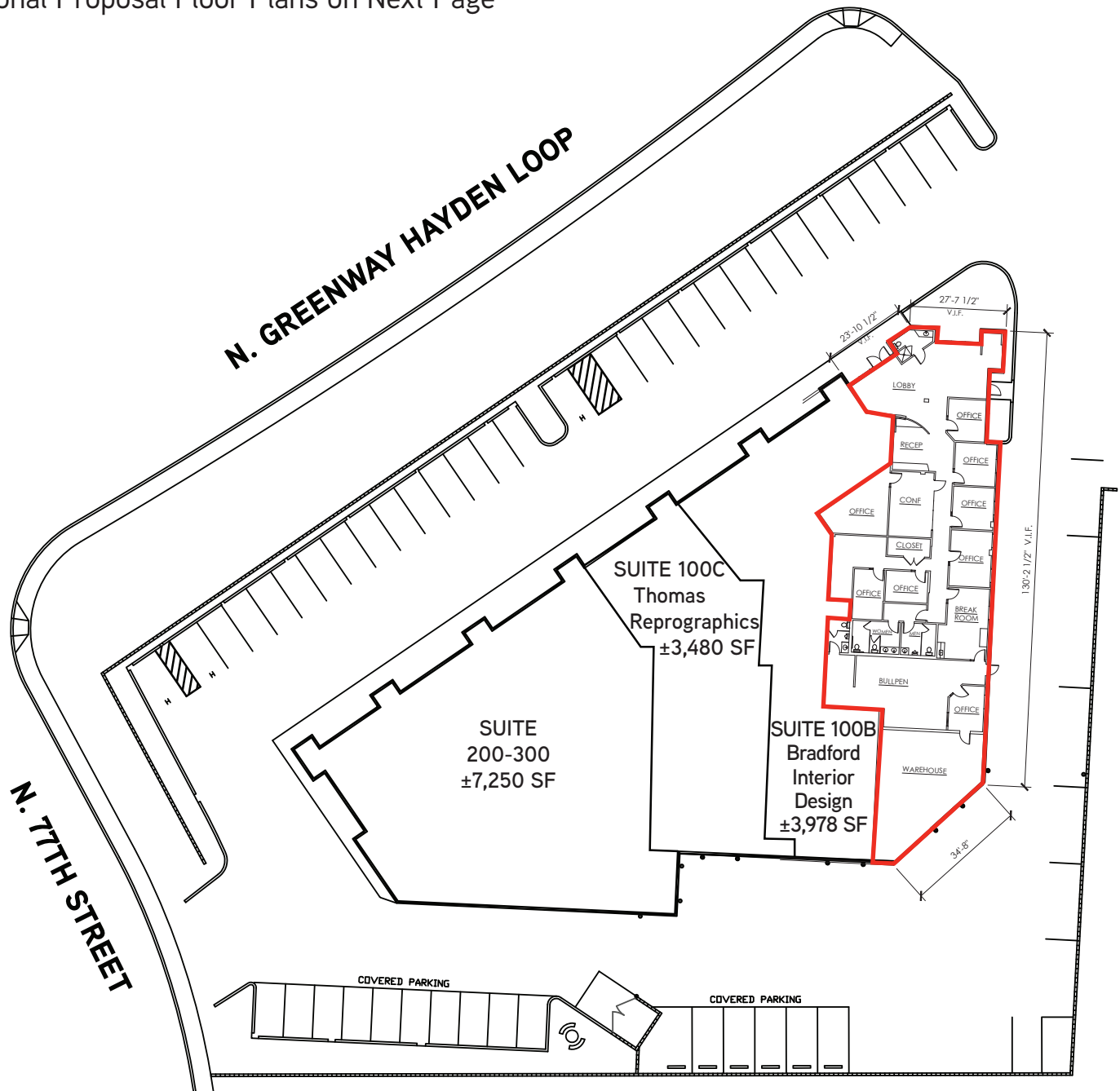
SCOTTSDALE AIRPARK

15685 N. GREENWAY HAYDEN LOOP | SCOTTSDALE, AZ 85260

SITE PLAN

Actual Floor Plan Outlined in Red

Optional Proposal Floor Plans on Next Page



JIM KEELEY
FOUNDING PARTNER | SCOTTSDALE OFFICE
DESIGNATED BROKER
DIR 480 655 3300 | MOB 602 721 6540
jim.keeley@colliers.com

COLLIERS INTERNATIONAL
8360 E. Raintree Dr. | Suite 130
Scottsdale, AZ 85260
www.colliers.com/greaterphoenix

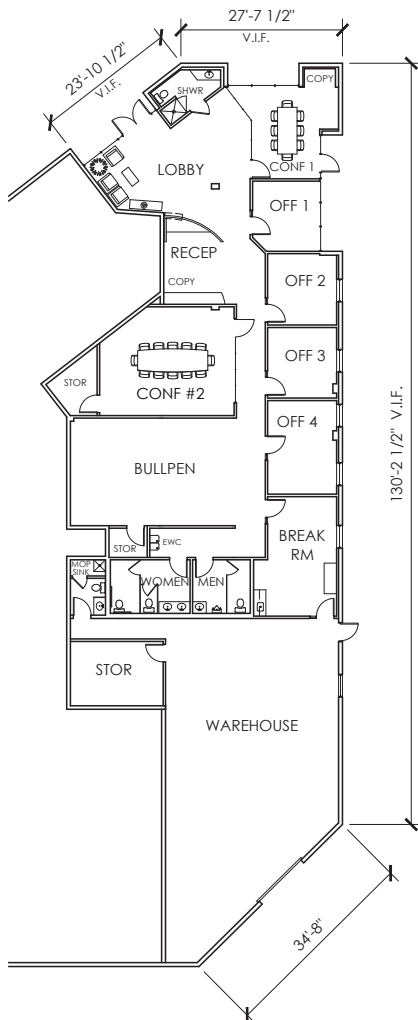
AVAILABLE FOR LEASE



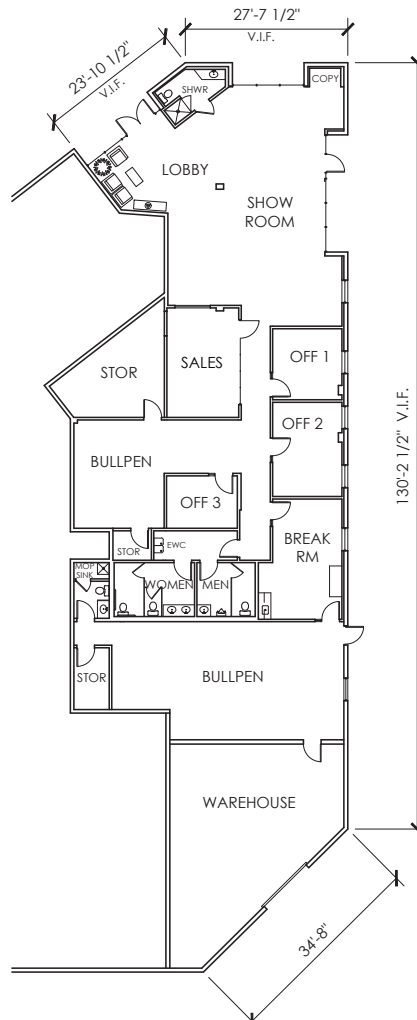
SCOTTSDALE AIRPARK

15685 N. GREENWAY HAYDEN LOOP | SCOTTSDALE, AZ 85260

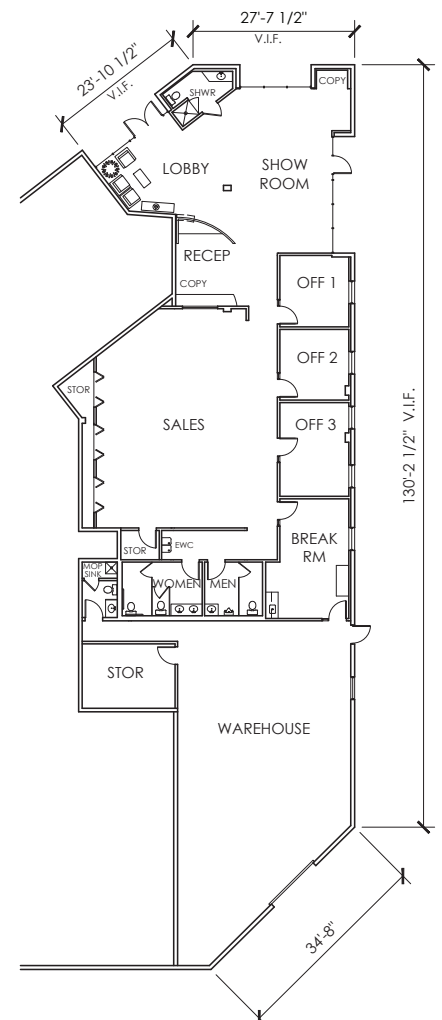
OPTIONAL PROPOSED FLOOR PLANS



FLOOR PLAN - OFFICE
SCALE: 1" = 20'.0"



FLOOR PLAN - DISTRIBUTION
SCALE: 1" = 20'.0"



FLOOR PLAN - SHOWROOM
SCALE: 1" = 20'.0"