



Lynnhaven Executive Park Office Space

For Lease

Pat Mugler

Executive Vice President
+1 757 228 1831
pat.mugler@colliers.com

Ricky Anderson

Executive Vice President
+1 757 217 1892
ricky.anderson@colliers.com

Colliers
150 West Main St | Suite 1100
Norfolk, VA 23510
P: +1 757 490 3300

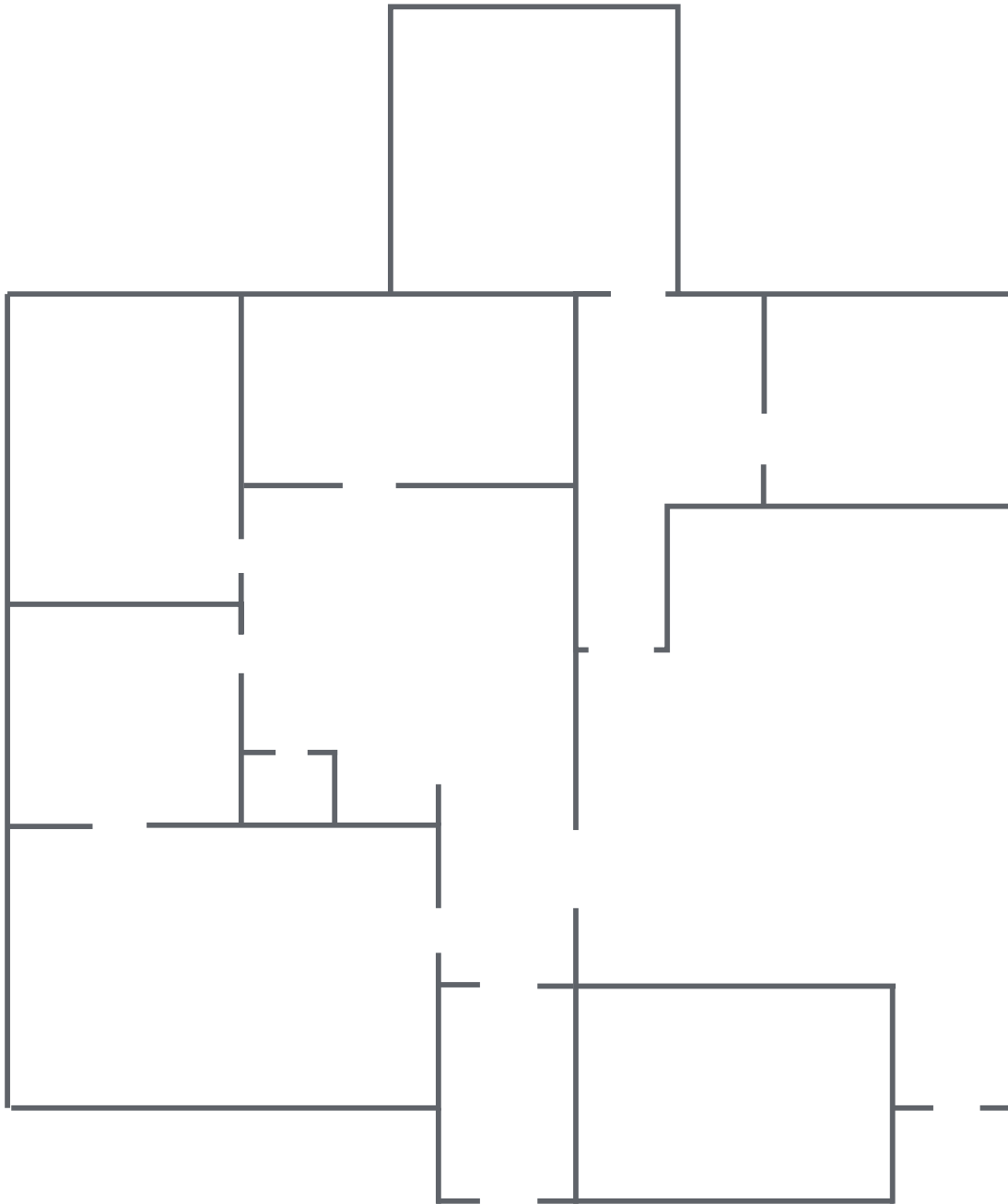
2610 Potters Road & 629 Wesley Drive
Virginia Beach, VA 23452

Features

- 2610 Potters Road Availability
Suite 200: $\pm 1,000$ - $\pm 4,653$ RSF (entire floor)
- 629 Wesley Drive Availability
Suite 200: $\pm 1,000$ - $\pm 4,500$ RSF (entire floor)
- Conveniently located just seconds from I-264
- Locally owned and managed
- Located in the desirable Lynnhaven submarket
- Lease Rate: \$16.00 PSF, Net of Electricity

Floor Plan

2610 Potters Road | Second Floor
1,000 - 4,653 RSF Available





Lynnhaven Executive Park

Pat Mugler
Executive Vice President
+1 757 228 1831
pat.mugler@colliers.com

Ricky Anderson
Executive Vice President
+1 757 217 1892
ricky.anderson@colliers.com

