

Kapiolani Boulevard

HONOLULU, HI

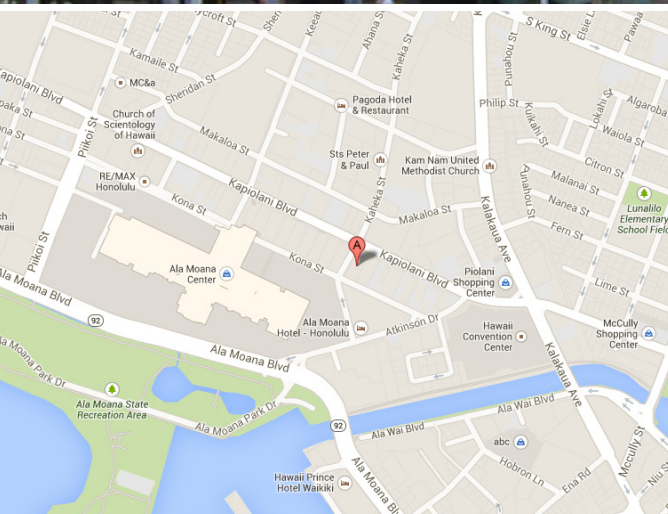
For Lease :: Office Space



PROPERTY DESCRIPTION:

Elegant office building on busy corner of Kapiolani Boulevard. Fully improved corner offices. Virtually column free floor plates allowing for maximum efficiency. Direct digital control system for temperature and energy control to maximize comfort. Easy ingress and egress from Kapiolani Boulevard and Kona Street.

| | |
|----------------------|---|
| Area: | Kapiolani |
| Zoning: | BMX-3 |
| Size Available: | 501 SF up to 2,676 SF |
| Base Rent: | Negotiable |
| Operating Expenses: | \$1.66 PSF/Month (Estimated 2017) |
| Parking: | 1:400 SF (currently \$115/stall) |
| Term: | Negotiable |
| Features & Benefits: | <ul style="list-style-type: none">• Fiber optic cable ready with available download speed rates ranging from 10 to 1000 Mbps• 24 hour security system• Ample parking to accommodate visitors with generous ratios for tenants• Great location convenient to Ala Moana Shopping Center and amenities• Some of the largest floor plates on the island |



FOR MORE INFORMATION CONTACT:

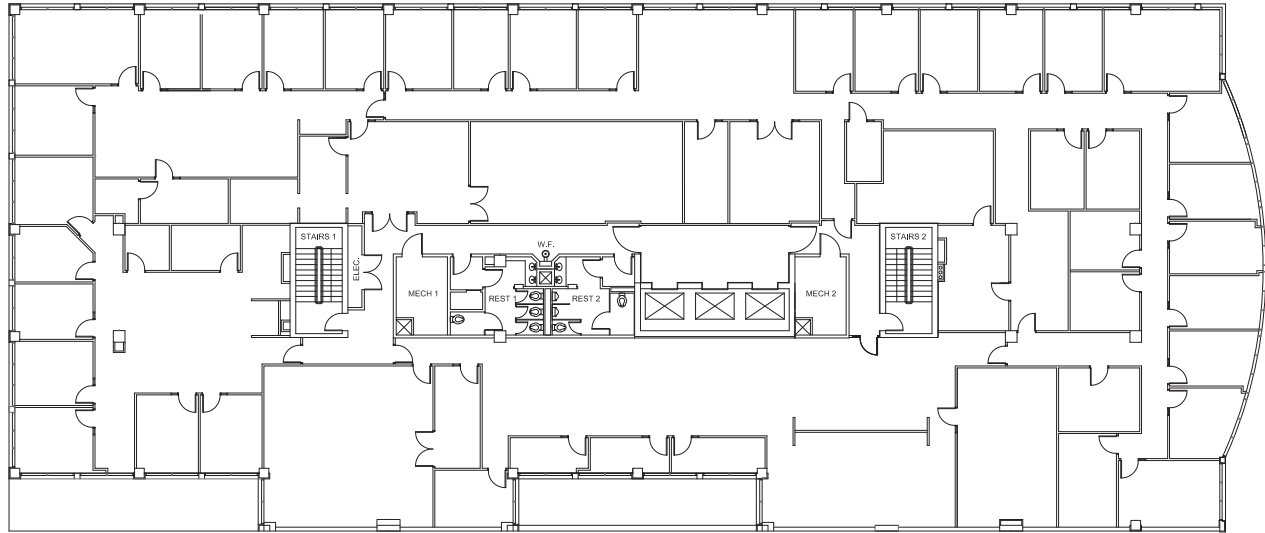
Brandon K. Bera (S) CCIM
Vice President
808.523.8309
brandon.bera@colliers.com

Neal E. Hafner (S) CCIM
Associate
808.523.8313
neal.hafner@colliers.com

220 South King Street
Honolulu, HI 96813
Tel: 808 524 2666
Fax: 808 521 0977



11TH FLOOR



AVAILABLE SPACES

| Suite | SF |
|------------|-----------|
| Suite 100 | 1,793 SF |
| Suite 1120 | 501 RSF |
| Suite 1130 | 2,676 RSF |



FOR MORE INFORMATION CONTACT:

Brandon K. Bera (S) CCIM
Vice President
808.523.8309
brandon.bera@colliers.com

Neal E. Hafner (S) CCIM
Associate
808.523.8313
neal.hafner@colliers.com

220 South King Street
Honolulu, HI 96813
Tel: 808 524 2666
Fax: 808 521 0977

