

FOR SALE OR LEASE > MIXED USE

## 14<sup>TH</sup> & 15<sup>TH</sup> ST. ASSEMBLAGE & REDEVELOPMENT

2607-2627 14<sup>TH</sup> STREET | DETROIT, MICHIGAN  
2616-2668 15<sup>TH</sup> STREET | DETROIT, MICHIGAN



RENDERING



### IN HISTORIC NORTH CORKTOWN

#### > PROPERTY HIGHLIGHTS

- 5,000 to 16,059 SF of Retail Space Available
- One Block From Slows BBQ, Michigan Central Train Station, CPA Building, Astro Coffee & Gold Cash Gold
- Great Redevelopment Mixed Use
- Condos, Retail & New Construction Apartments

#### > DEMOGRAPHICS

	1 MILE	3 MILE	5 MILE
POPULATION	9,866	101,192	258,085
AVG. INCOME	\$38,967	\$36,846	\$36,397
HOUSEHOLDS	4,324	45,218	104,018

**COLLIERS INTERNATIONAL**  
2 Corporate Drive | Suite 300  
Southfield, Michigan 48076

#### For More Information Call:

**BEN ROSENZWEIG**

PHONE 248 540 1000 EXT 1866  
EMAIL [ben.rosenzweig@colliers.com](mailto:ben.rosenzweig@colliers.com)



**BEN HUBERT**

PHONE 248 540 1000 EXT 1864  
EMAIL [ben.hubert@colliers.com](mailto:ben.hubert@colliers.com)



[colliers.com/detroit](http://colliers.com/detroit)



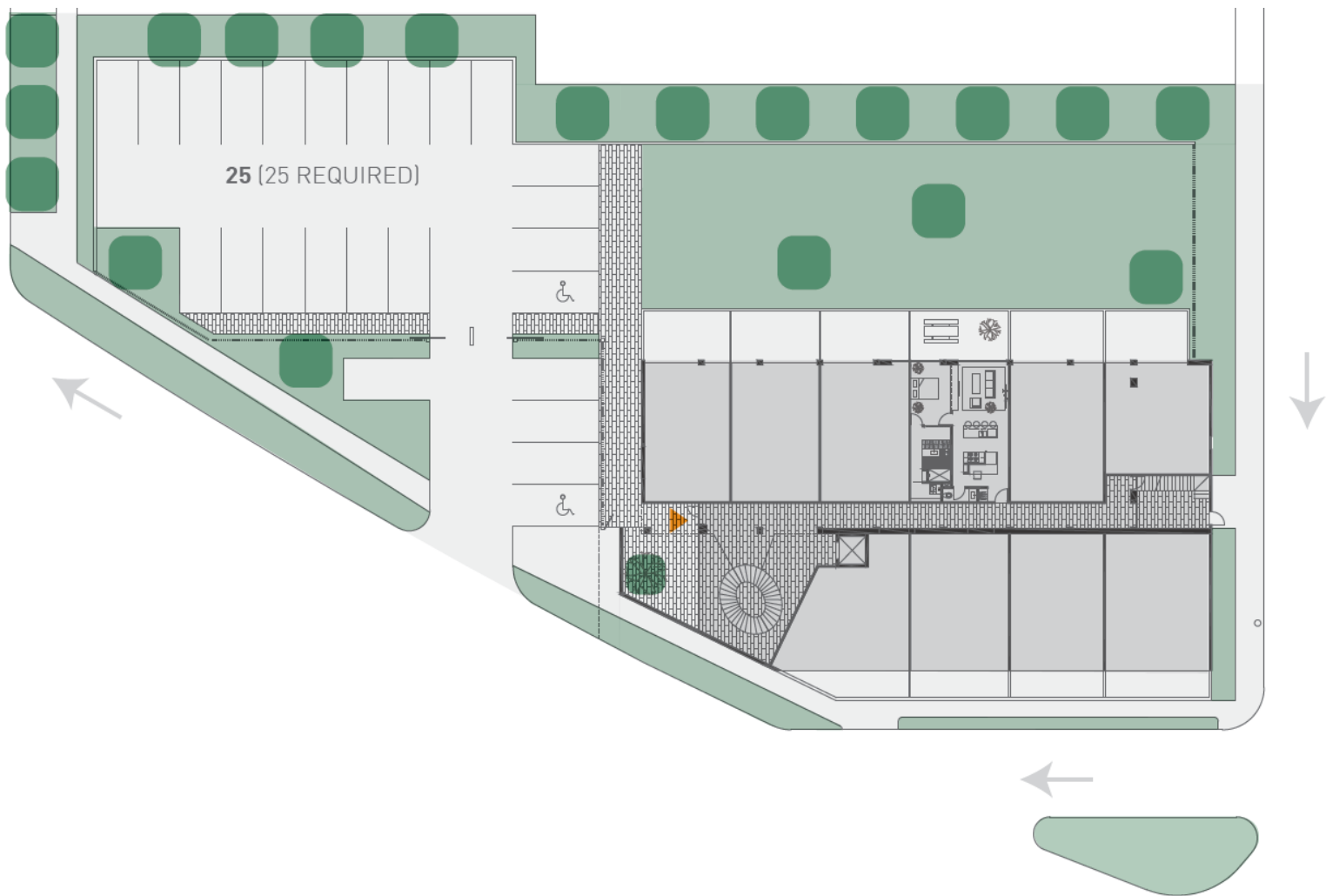
FOR SALE OR LEASE > MIXED USE

## 14<sup>TH</sup> & 15<sup>TH</sup> ST. ASSEMBLAGE & REDEVELOPMENT

2607-2627 14<sup>TH</sup> STREET | DETROIT, MICHIGAN  
2616-2668 15<sup>TH</sup> STREET | DETROIT, MICHIGAN



### > SITE PLAN + ACCESS LAND



**BEN ROSENZWEIG**

PHONE 248 540 1000 EXT 1866

EMAIL [ben.rosenzweig@colliers.com](mailto:ben.rosenzweig@colliers.com)



**BEN HUBERT**

PHONE 248 540 1000 EXT 1864

EMAIL [ben.hubert@colliers.com](mailto:ben.hubert@colliers.com)

FOR SALE OR LEASE > MIXED USE

## 14<sup>TH</sup> & 15<sup>TH</sup> ST. ASSEMBLAGE & REDEVELOPMENT

2607-2627 14<sup>TH</sup> STREET | DETROIT, MICHIGAN  
2616-2668 15<sup>TH</sup> STREET | DETROIT, MICHIGAN



### > AERIAL MAP OF PARCELS



**BEN ROSENZWEIG**

PHONE 248 540 1000 EXT 1866

EMAIL [ben.rosenzweig@colliers.com](mailto:ben.rosenzweig@colliers.com)



**BEN HUBERT**

PHONE 248 540 1000 EXT 1864

EMAIL [ben.hubert@colliers.com](mailto:ben.hubert@colliers.com)



FOR SALE OR LEASE > MIXED USE

## 14<sup>TH</sup> & 15<sup>TH</sup> ST. ASSEMBLAGE & REDEVELOPMENT

2607-2627 14<sup>TH</sup> STREET | DETROIT, MICHIGAN  
2616-2668 15<sup>TH</sup> STREET | DETROIT, MICHIGAN



### > EXTERIOR RENDERINGS



**BEN ROSENZWEIG**

PHONE 248 540 1000 EXT 1866

EMAIL [ben.rosenzweig@colliers.com](mailto:ben.rosenzweig@colliers.com)



**BEN HUBERT**

PHONE 248 540 1000 EXT 1864

EMAIL [ben.hubert@colliers.com](mailto:ben.hubert@colliers.com)

FOR SALE OR LEASE > MIXED USE

## 14<sup>TH</sup> & 15<sup>TH</sup> ST. ASSEMBLAGE & REDEVELOPMENT

2607-2627 14<sup>TH</sup> STREET | DETROIT, MICHIGAN  
2616-2668 15<sup>TH</sup> STREET | DETROIT, MICHIGAN



### > EXTERIOR RENDERINGS



NORTH CORNER



SOUTHWEST CORNER



SOUTHEAST CORNER

**BEN ROSENZWEIG**

PHONE 248 540 1000 EXT 1866

EMAIL [ben.rosenzweig@colliers.com](mailto:ben.rosenzweig@colliers.com)



**BEN HUBERT**

PHONE 248 540 1000 EXT 1864

EMAIL [ben.hubert@colliers.com](mailto:ben.hubert@colliers.com)



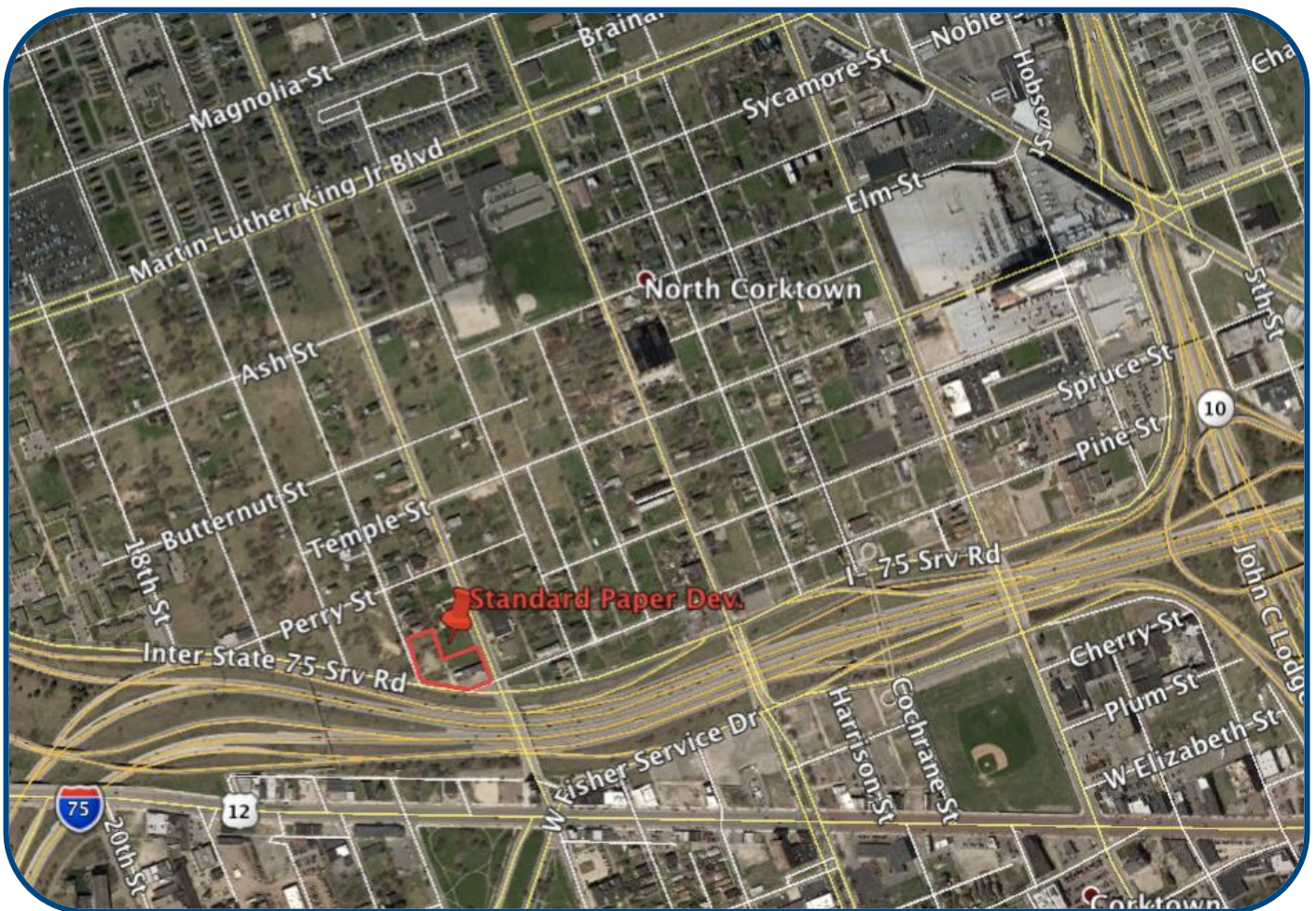
FOR SALE OR LEASE > MIXED USE

## 14<sup>TH</sup> & 15<sup>TH</sup> ST. ASSEMBLAGE & REDEVELOPMENT

2607-2627 14<sup>TH</sup> STREET | DETROIT, MICHIGAN  
2616-2668 15<sup>TH</sup> STREET | DETROIT, MICHIGAN



### > AERIAL



**BEN ROSENZWEIG**

PHONE 248 540 1000 EXT 1866

EMAIL [ben.rosenzweig@colliers.com](mailto:ben.rosenzweig@colliers.com)



**BEN HUBERT**

PHONE 248 540 1000 EXT 1864

EMAIL [ben.hubert@colliers.com](mailto:ben.hubert@colliers.com)



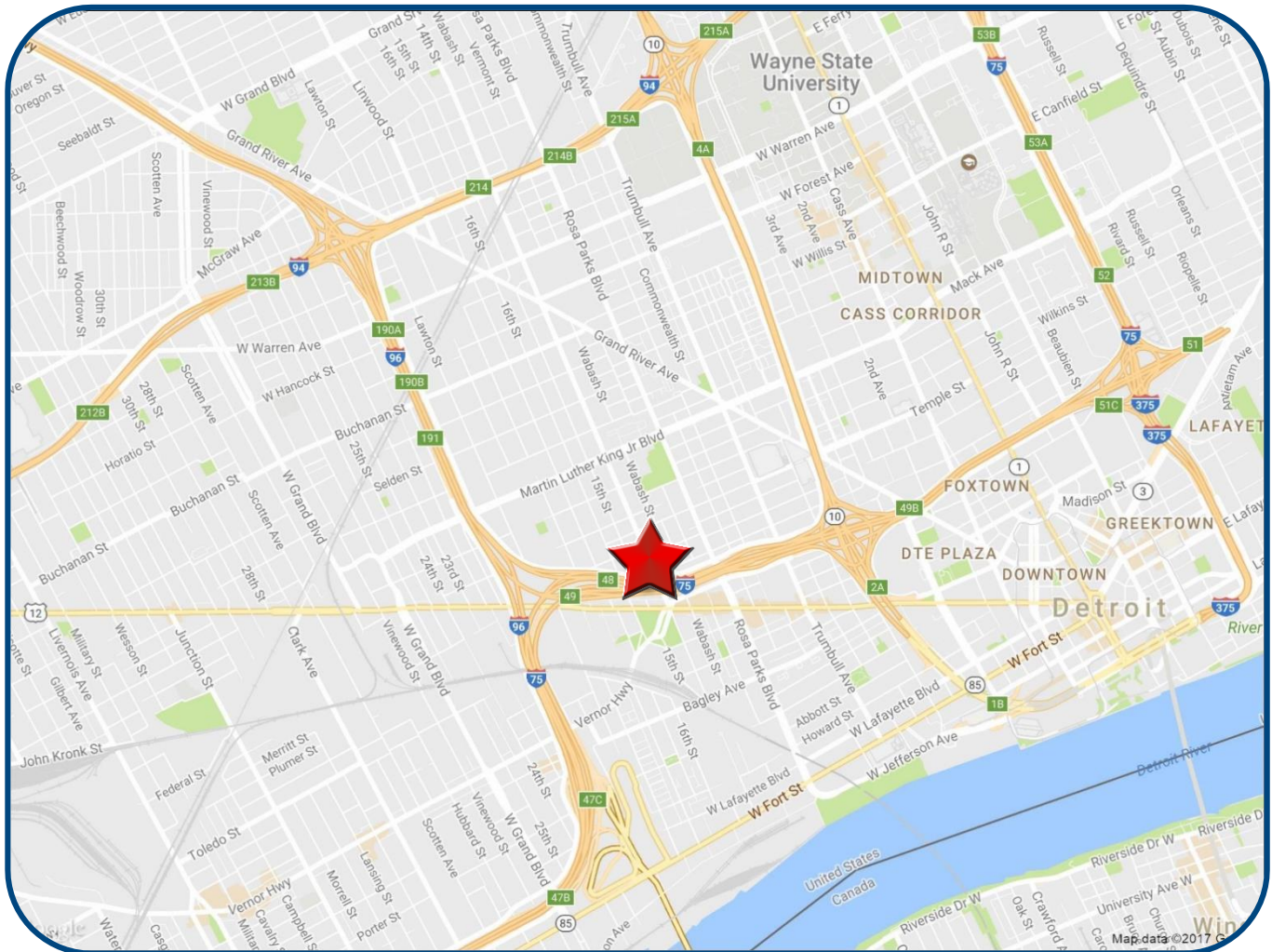
FOR SALE OR LEASE > MIXED USE

# 14<sup>TH</sup> & 15<sup>TH</sup> ST. ASSEMBLAGE & REDEVELOPMENT

2607-2627 14<sup>TH</sup> STREET | DETROIT, MICHIGAN  
2616-2668 15<sup>TH</sup> STREET | DETROIT, MICHIGAN



## > LOCATION MAP



**BEN ROSENZWEIG**

PHONE 248 540 1000 EXT 1866

EMAIL [ben.rosenzweig@colliers.com](mailto:ben.rosenzweig@colliers.com)



**BEN HUBERT**

PHONE 248 540 1000 EXT 1864

EMAIL [ben.hubert@colliers.com](mailto:ben.hubert@colliers.com)



FOR SALE OR LEASE > MIXED USE

## 14<sup>TH</sup> & 15<sup>TH</sup> ST. ASSEMBLAGE & REDEVELOPMENT

2607-2627 14<sup>TH</sup> STREET | DETROIT, MICHIGAN  
2616-2668 15<sup>TH</sup> STREET | DETROIT, MICHIGAN



### > AREA MERCHANT MAP



**BEN ROSENZWEIG**

PHONE 248 540 1000 EXT 1866

EMAIL [ben.rosenzweig@colliers.com](mailto:ben.rosenzweig@colliers.com)



**BEN HUBERT**

PHONE 248 540 1000 EXT 1864

EMAIL [ben.hubert@colliers.com](mailto:ben.hubert@colliers.com)



# SUMMARY PROFILE

2000-2010 Census, 2016 Estimates with 2021 Projections

Calculated using Weighted Block Centroid from Block Groups



Lat/Lon: 42.3332/-83.0780

RS1

2607 14th St		1 mi radius	3 mi radius	5 mi radius
Detroit, MI 48216-1142				
POPULATION	2016 Estimated Population	9,866	101,192	258,085
	2021 Projected Population	9,800	103,392	266,217
	2010 Census Population	10,133	104,322	266,398
	2000 Census Population	9,997	129,780	341,194
	Projected Annual Growth 2016 to 2021	-0.1%	0.4%	0.6%
	Historical Annual Growth 2000 to 2016	-0.1%	-1.4%	-1.5%
	2016 Median Age	35.7	34.9	34.9
HOUSEHOLDS	2016 Estimated Households	4,324	45,218	104,018
	2021 Projected Households	4,379	47,321	110,548
	2010 Census Households	4,156	44,440	102,735
	2000 Census Households	3,830	51,053	125,962
	Projected Annual Growth 2016 to 2021	0.3%	0.9%	1.3%
	Historical Annual Growth 2000 to 2016	0.8%	-0.7%	-1.1%
RACE AND ETHNICITY	2016 Estimated White	29.0%	28.5%	31.0%
	2016 Estimated Black or African American	58.9%	54.0%	54.8%
	2016 Estimated Asian or Pacific Islander	1.0%	2.2%	3.1%
	2016 Estimated American Indian or Native Alaskan	0.6%	0.6%	0.5%
	2016 Estimated Other Races	10.4%	14.7%	10.7%
	2016 Estimated Hispanic	17.5%	24.6%	15.7%
INCOME	2016 Estimated Average Household Income	\$38,967	\$36,846	\$36,397
	2016 Estimated Median Household Income	\$29,200	\$26,552	\$27,280
	2016 Estimated Per Capita Income	\$18,220	\$16,969	\$15,013
EDUCATION (AGE 25+)	2016 Estimated Elementary (Grade Level 0 to 8)	7.5%	10.1%	10.7%
	2016 Estimated Some High School (Grade Level 9 to 11)	15.8%	16.3%	16.5%
	2016 Estimated High School Graduate	30.2%	28.8%	30.2%
	2016 Estimated Some College	22.2%	21.1%	21.4%
	2016 Estimated Associates Degree Only	4.7%	5.8%	6.1%
	2016 Estimated Bachelors Degree Only	10.7%	8.8%	8.2%
	2016 Estimated Graduate Degree	8.9%	9.1%	6.9%
BUSINESS	2016 Estimated Total Businesses	549	8,434	12,722
	2016 Estimated Total Employees	10,594	167,450	221,096
	2016 Estimated Employee Population per Business	19.3	19.9	17.4
	2016 Estimated Residential Population per Business	18.0	12.0	20.3

This report was produced using data from private and government sources deemed to be reliable. The information herein is provided without representation or warranty.