

For Lease

The Victory Building

Class "A" Office Space

1401 W Capitol Avenue,
Little Rock, AR

GREG JOSLIN, CCIM, SIOR
501 978 6581
greg.joslin@colliers.com



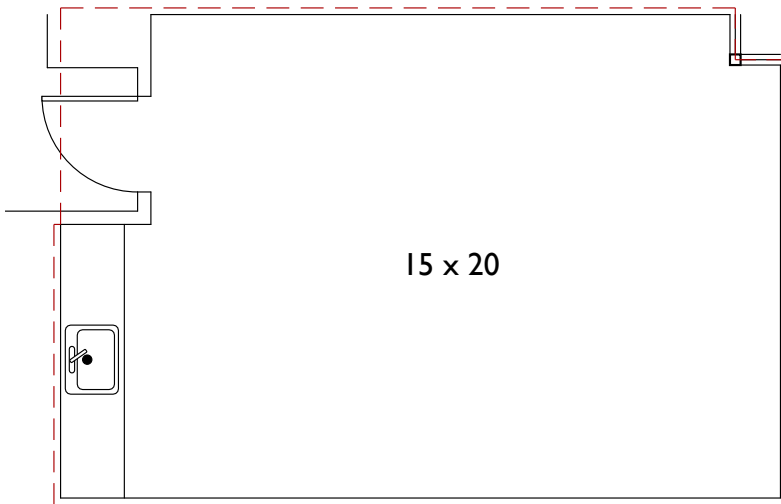
COLLIERS INTERNATIONAL
1 Allied Dr, Suite 1500
Little Rock, AR 72202
501 372 6161
www.colliers.com/arkansas

KEY FEATURES/HIGHLIGHTS

- › Suite 260: approximately 430 SF
- › Lease rate: \$19.85/SF, Full Service Gross
- › Tenant improvement allowance: negotiable
- › Class "A" office space
- › Two restaurants in the building
- › Easily accessible to I-630 and I-30
- › Multi-level covered parking deck

FOR LEASE > Class "A" Office Space

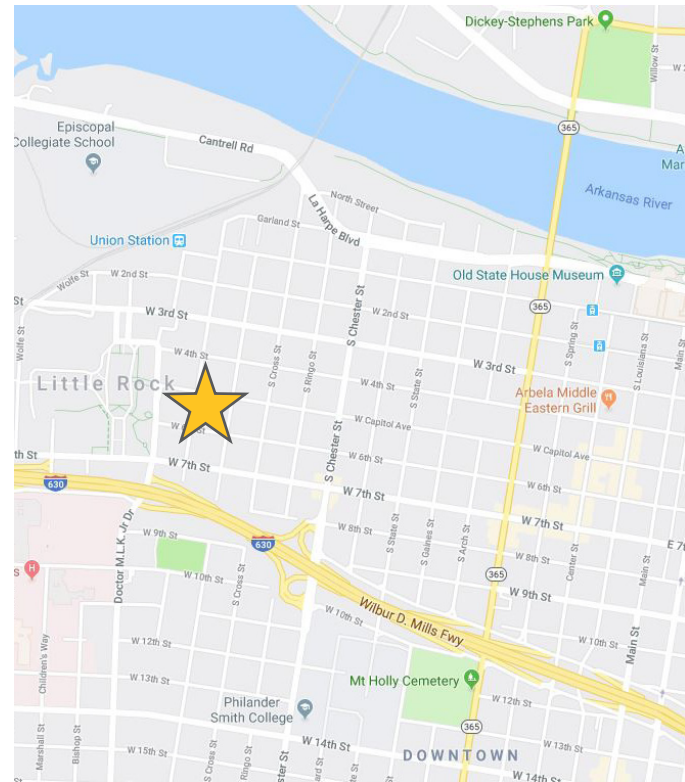
SUITE 260 FLOOR PLAN



PROPERTY PHOTOS



This document has been prepared by Colliers International for advertising and general information only. Colliers International makes no guarantees, representations or warranties of any kind, expressed or implied, regarding the information including, but not limited to, warranties of content, accuracy and reliability. Any interested party should undertake their own inquiries as to the accuracy of the information. Colliers International excludes unequivocally all inferred or implied terms, conditions and warranties arising out of this document and excludes all liability for loss and damages arising there from. This publication is the copyrighted property of Colliers International and/or its licensor(s). ©2016. All rights reserved.



CONTACT US

GREG JOSLIN, CCIM, SIOR
501 978 6581
greg.joslin@colliers.com



COLLIERS INTERNATIONAL
1 Allied Dr, Suite 1500
Little Rock, AR 72202
+1 501 372 6161
www.colliers.com/arkansas

