

FOR LEASE > RETAIL SPACE

MILLARD PARK PLAZA

15665 HARRISON STREET, OMAHA, NE 68136



Accelerating success.



Building information

Type of Listing:	Retail for Lease	Intersection:	156 th & Harrison
Price:	\$12.00/SF	Submarket:	Southwest
Operating Type:	NNN		
Est. Expenses:	\$8.22 SF (2020)	Heat & A/C:	Yes
Available:	May 1, 2021	Ceiling Height:	9'-11'
SF Available:	2,160 SF	Sprinkler:	No
Total Building SF:	16,920 SF	Restrooms:	Yes
Year Built:	1999 / 2003	Parking:	5:1,000
Center Type:	Strip Center		

<u>Suite #:</u>	<u>SF Available:</u>
I/J	2,160 SF

Length of Lease:	3-5 Years
TI Allowance:	Negotiable
Rent Escalator:	Negotiable
Lease Form:	Landlord's

Overview

Well established center located on the southwest corner of 156th & Harrison. Well established office and retail users such as Millard Oaks Dental, State Farm Insurance, Pro Cuts and Makovicka Physical Therapy.

Storefront and monument signage available on Harrison Street.

Suite I/J is a former vet clinic & K9 Training facility.

Information furnished is from sources deemed reliable, but is not guaranteed by Colliers International, or its agents, and is subject to change, corrections, errors and omissions, prior sales, or withdrawn without notice.

Contact us

AGENT: Cori Adcock
+1 402 763 1712
Omaha, NE
Cori.Adcock@colliers.com

COLLIERS INTERNATIONAL
6464 Center Street | Suite 200
Omaha, NE 68106
www.colliers.com

FOR LEASE > RETAIL SPACE

MILLARD PARK PLAZA

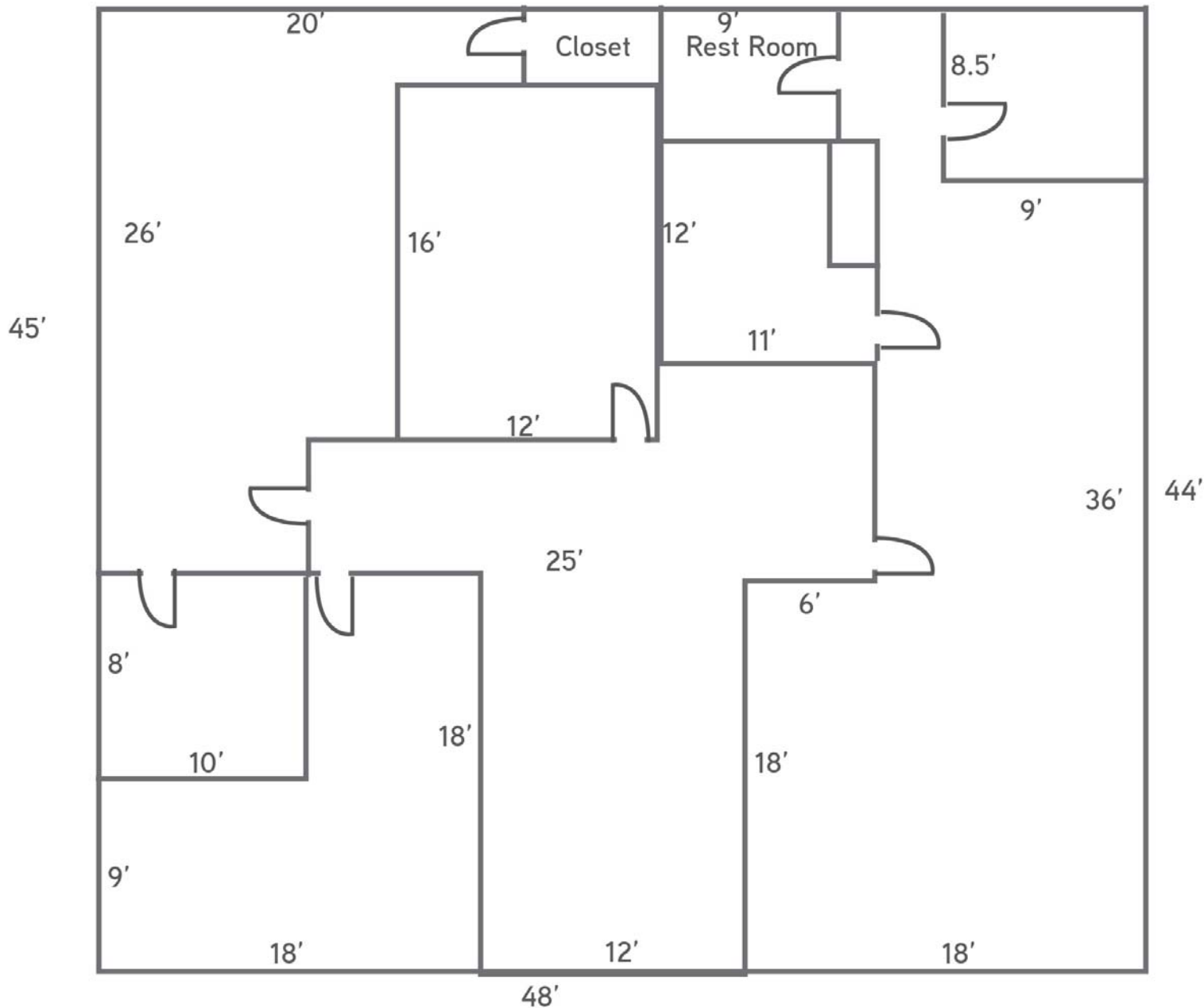
15665 HARRISON STREET, OMAHA, NE 68136



Accelerating success.

Floor plan

Suite I/J – 2,160 SF



Contact us

AGENT: Cori Adcock
+1 402 763 1712
Omaha, NE
Cori.Adcock@colliers.com

COLLIERS INTERNATIONAL
6464 Center Street | Suite 200
Omaha, NE 68106
www.colliers.com

FOR LEASE > RETAIL SPACE

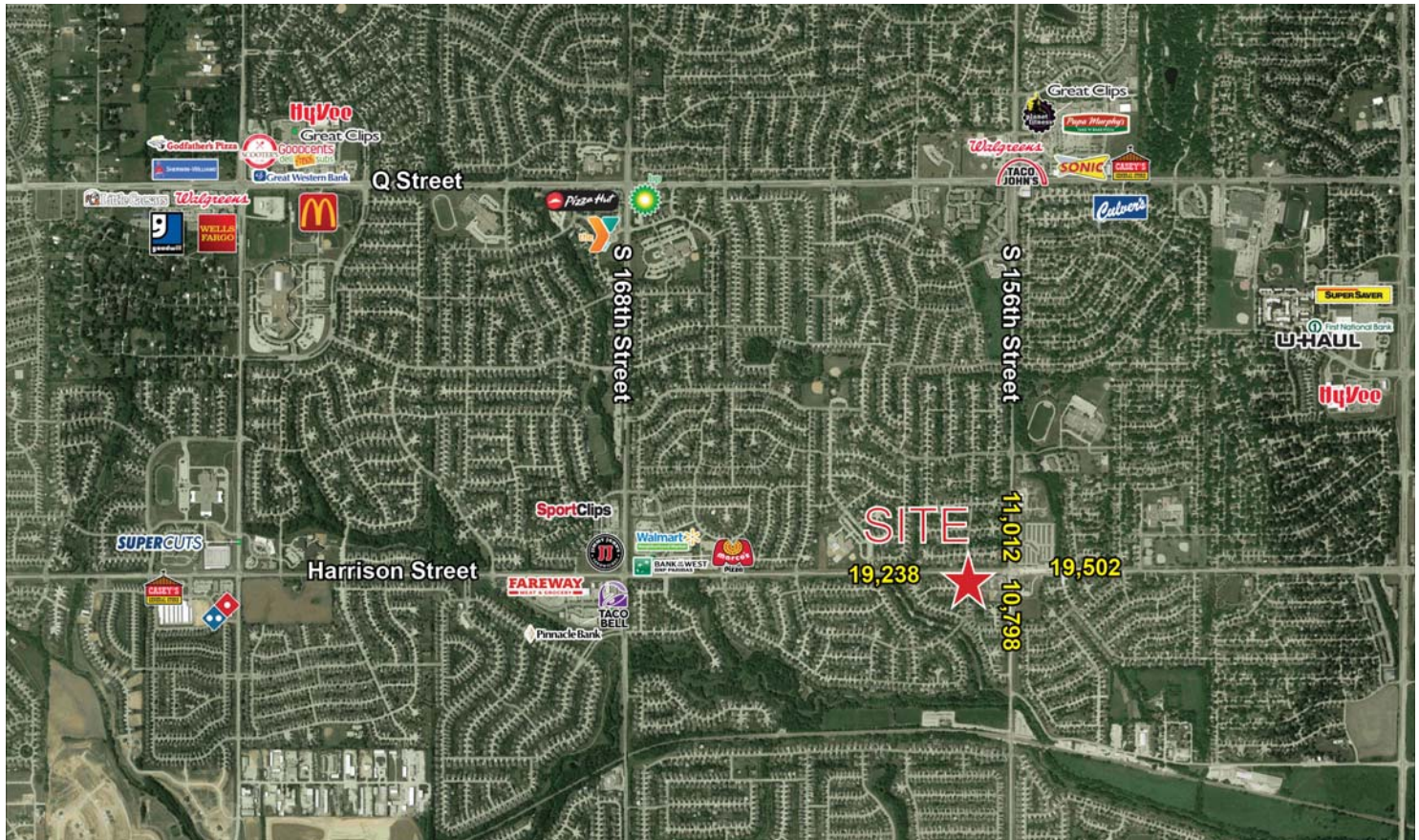
MILLARD PARK PLAZA

15665 HARRISON STREET, OMAHA, NE 68136



Accelerating success.

Aerial



Contact us

AGENT: Cori Adcock
+1 402 763 1712
Omaha, NE
Cori.Adcock@colliers.com

COLLIERS INTERNATIONAL
6464 Center Street | Suite 200
Omaha, NE 68106
www.colliers.com