

For Lease > Office Space

6101 MARTWAY

Mission, Kansas



PROPERTY FEATURES

- > 2,200 SF on 1st floor available
- > Lease rate: \$22.00 PSF, net janitorial
- > Negotiable tenant finish allowance
- > Great owner-user opportunity
- > 17 parking spaces

CONTACT

EVAN WARWICK
+1 816 556 1137
KANSAS CITY, MO
evan.warwick@colliers.com

COLLIERS INTERNATIONAL
4520 Main Street, Suite 1000
Kansas City, MO 64111
www.colliers.com

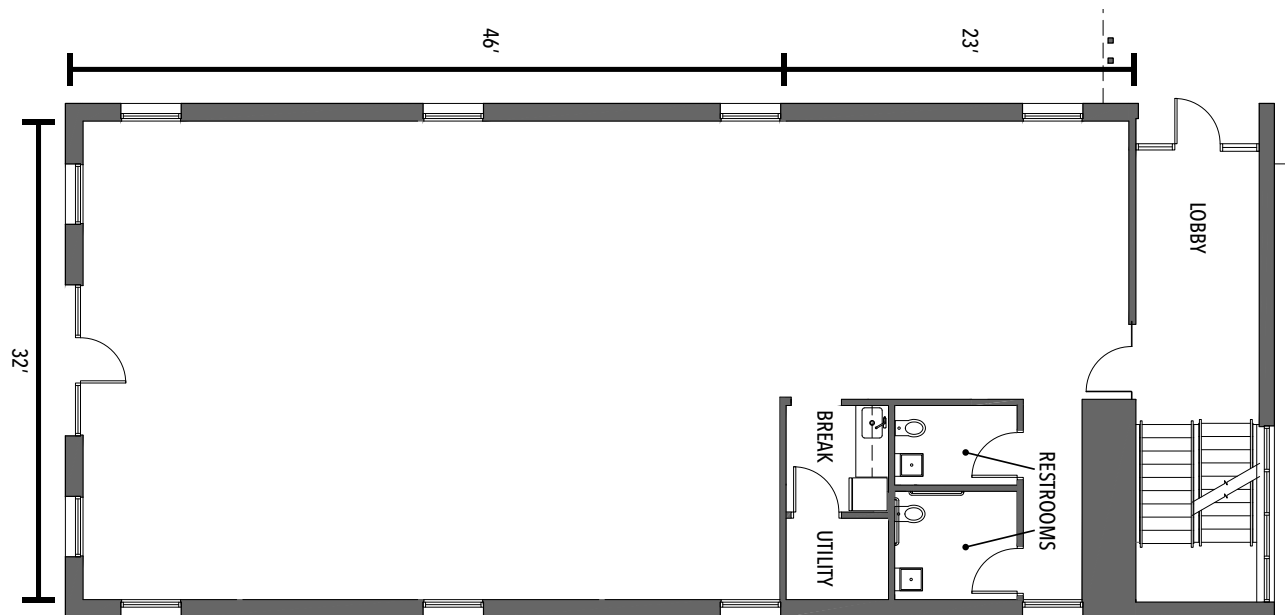


For Lease > Office Space

6101 MARTWAY

Mission, Kansas

FLOOR PLAN



This document has been prepared by Colliers International for advertising and general information only. Colliers International makes no guarantees, representations or warranties of any kind, expressed or implied, regarding the information including, but not limited to, warranties of content, accuracy and reliability. Any interested party should undertake their own inquiries as to the accuracy of the information. Colliers International excludes unequivocally all inferred or implied terms, conditions and warranties arising out of this document and excludes all liability for loss and damages arising there from. This publication is the copyrighted property of Colliers International and/or its licensor(s). ©2018. All rights reserved.

COLLIERS INTERNATIONAL
4520 Main Street, Suite 1000
Kansas City, MO 64111
www.colliers.com