

Lenexa

SUBLEASE



OFFICE SUBLEASE | 16820 W 89TH Street | Lenexa, KS

- Space available — 9,899 SF (can be divided)
- Move in ready
- Sublease expires 6/30/2020
- \$17.50 NNN
- Parking ratio — 4/1,000

Evan Warwick

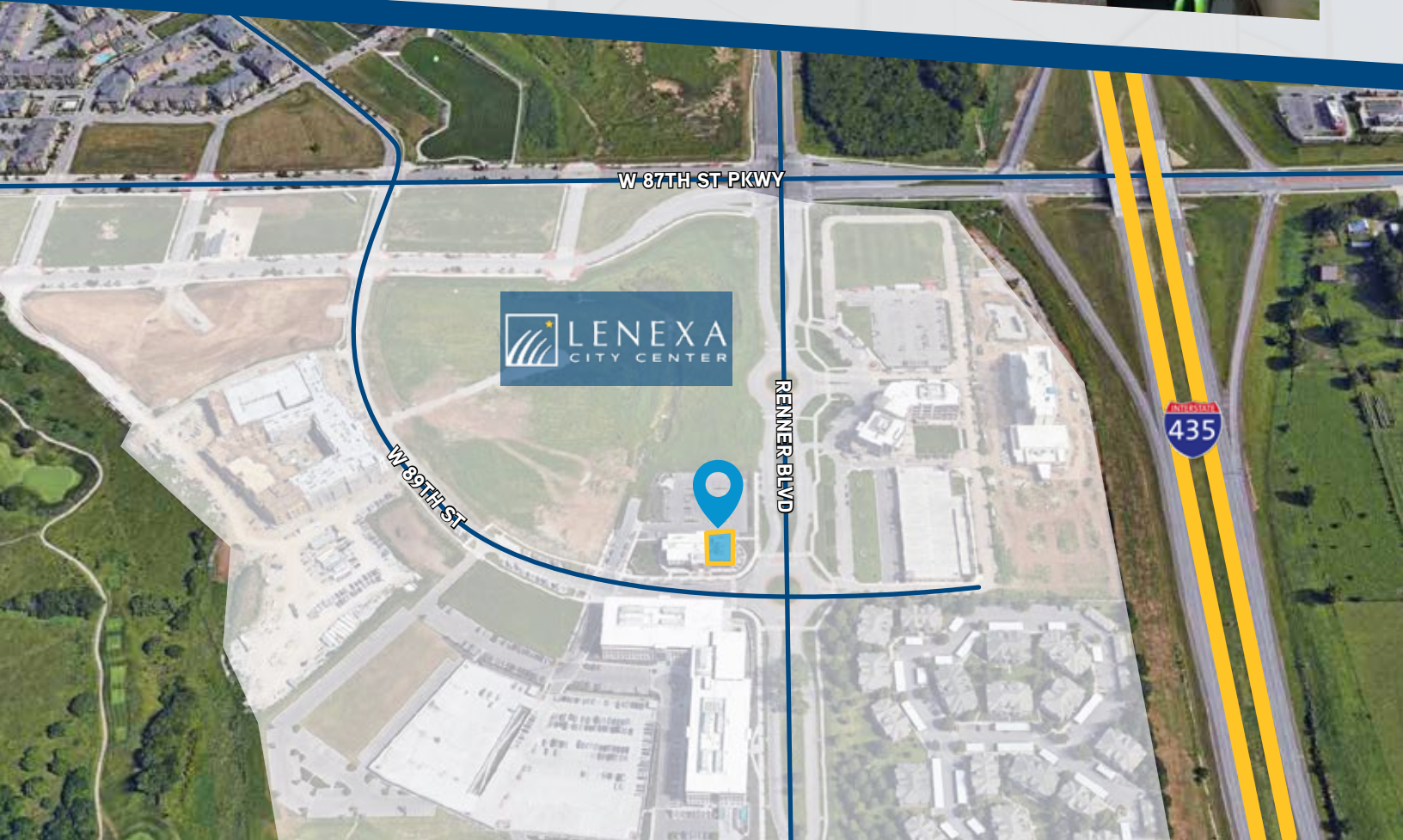
Senior Vice President
+1 816 556 1137
evan.warwick@colliers.com

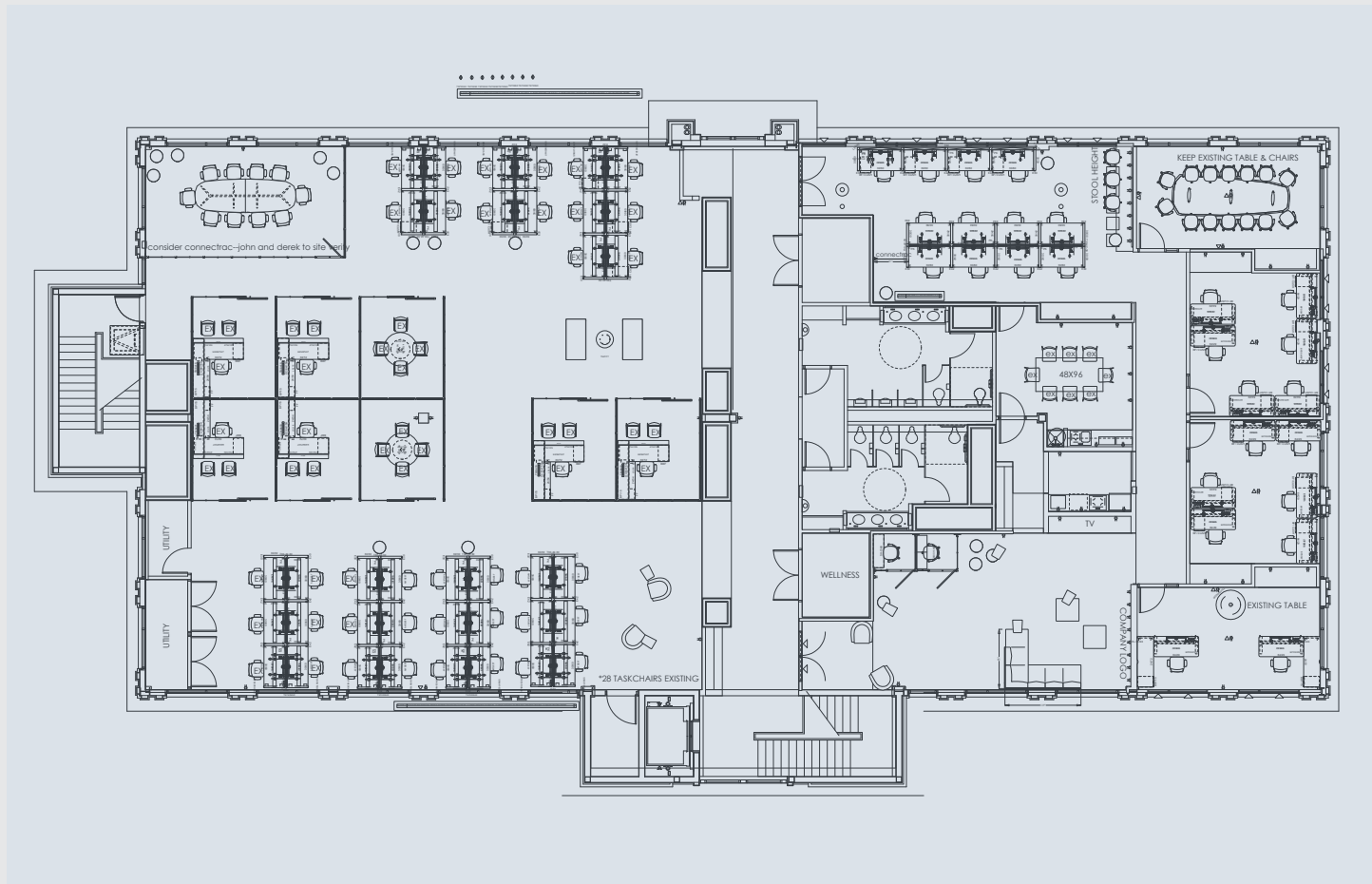
Colliers International | Kansas City
4520 Main Street, Suite 1000
Kansas City, MO 64111
+1 816 531 5303



Accelerating success.

FOR SUBLEASE | 16820 W 89TH Street | Lenexa, Kansas





FLOOR PLAN





EVAN WARWICK

Senior Vice President

+1 816 556 1137

evan.warwick@colliers.com

This document has been prepared by Colliers International for advertising and general information only. Colliers International makes no guarantees, representations or warranties of any kind, expressed or implied, regarding the information including, but not limited to, warranties of content, accuracy and reliability. Any interested party should undertake their own inquiries as to the accuracy of the information. Colliers International excludes unequivocally all inferred or implied terms, conditions and warranties arising out of this document and excludes all liability for loss and damages arising there from. This publication is the copyrighted property of Colliers International and/or its licensor(s). ©2018. All rights reserved.