



**FOR SALE/LEASE**

**1230** | ARCH STREET  
PHILADELPHIA, PA

COLLIERS INTERNATIONAL  
Ten Penn Center  
1801 Market Street, Suite 500  
Philadelphia, PA 19103  
[www.colliers.com/philadelphia](http://www.colliers.com/philadelphia)







Pennsylvania  
Convention Center  
PHILADELPHIA

ARCH ST

BROAD ST

15TH ST

JFK BLVD

CITY HALL

13TH ST

Panera  
BURGERFI

12TH ST

READING  
TERMINAL  
MARKET

11TH ST

## PROPERTY FEATURES

- › 5,107 SF retail space in excellent location
- › Flagship corner location adjacent to the Pennsylvania Convention Center, City Hall, Family Court House and The Reading Terminal Market
- › Fantastic frontage on both 13th and Arch Streets
- › Basement space available

## SURROUNDING TENANTS INCLUDE...

**aloft**  
(UNDER CONSTRUCTION)

**chili's**

**MAGGIANO'S**  
LITTLE ITALY®

**Burlington**

**OLD NAVY**

**BURGERFI**

**COURTYARD**  
Marriott

**Residence Inn**  
Marriott

**LOEWS**  
PHILADELPHIA  
HOTEL

**FOUR POINTS**  
BY SHERATON

**STARBUCKS**  
COFFEE

**McDonald's**

**Panera**  
BREAD®

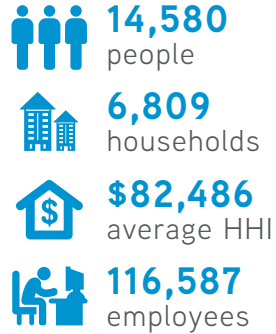
**macy's**

The foregoing information was furnished to us by sources which we deem to be reliable, but no warranty or representation is made as to the accuracy thereof. Subject to correction of errors, omissions, change of price, prior sale or withdrawal from market without notice. The aerial image is intended to provide a general outline of the subject property. It is not a survey nor should it be relied upon for purposes of determining property lines or boundaries.

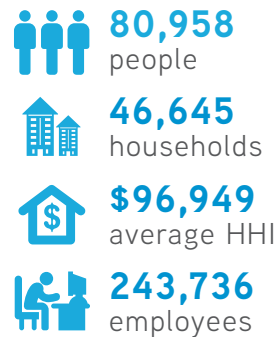


# DEMOGRAPHICS

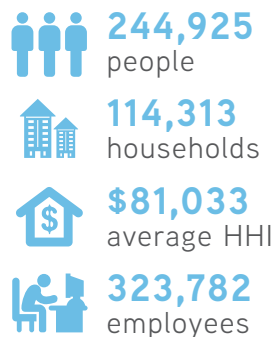
## WITHIN 1/2 MILE



## WITHIN 1 MILE



## WITHIN 2 MILES



**1230** | ARCH STREET  
PHILADELPHIA, PA



**Pennsylvania  
Convention Center  
PHILADELPHIA**

IN THE HEART OF IT ALL

With one million feet of space and the largest ballroom on the East coast, The Pennsylvania Convention Center is home to nearly 250 events each year.



Reading Terminal Market is generally recognized as one of the nation's leading public markets. 6.3 million people visit each year, the majority of them residents of the five-county Philadelphia metro area.





## CONTACT US

**COLLIERS INTERNATIONAL**  
 Ten Penn Center  
 1801 Market Street, Suite 500  
 Philadelphia, PA 19103  
[www.colliers.com/philadelphia](http://www.colliers.com/philadelphia)

**TODD SUSSMAN**  
 SENIOR VICE PRESIDENT  
 +1 215 928 7575  
[todd.sussman@colliers.com](mailto:todd.sussman@colliers.com)

**JOSH GOLDFINE**  
 VICE PRESIDENT  
 +1 215 928 7565  
[josh.goldfine@colliers.com](mailto:josh.goldfine@colliers.com)



@ColliersPhilly



Colliers Philly



[colliers.com/philadelphia](http://colliers.com/philadelphia)