

FOR LEASE



SOUTH POINT MALL 1035 S US 27 BR, St Johns, MI

2,687 - ±17,000 SF of Retail and Office Space Available



Shawn H. O'Brien, CCIM
Senior Vice President
517 303 5554
shawn.obrien@colliers.com



Amy Richter-Perkins
Associate Vice President
517 614 1314
amy.richter-perkins@colliers.com



Burm Kim
Associate Investment Advisor
517 349 3732
burm.kim@colliers.com



Colliers Lansing
2501 Coolidge Rd
Suite 300
East Lansing, MI 48823
colliers.com/lansing





FOR LEASE

2,687 – 17,000 SF Retail and Office Space

PROPERTY HIGHLIGHTS

- **Retail:**
 - Lease Rate \$8.00 - \$12.00/SF NNN (Est. \$2.75/SF)
 - Suite A3: 3,100 SF
 - Suite B25 – B33: ±17,000 SF
- **Office:**
 - Lease Rate \$10.00/SF NNN (Est. \$2.75/SF)
 - Suite 5: 2,687 SF
- **High Traffic Count:** US 27 BR with 12,622 AADT
- **Three Points of Egress:** Scott Road, Sturgis Street and Business Route 27
- **Signage:** Pylon and Suite

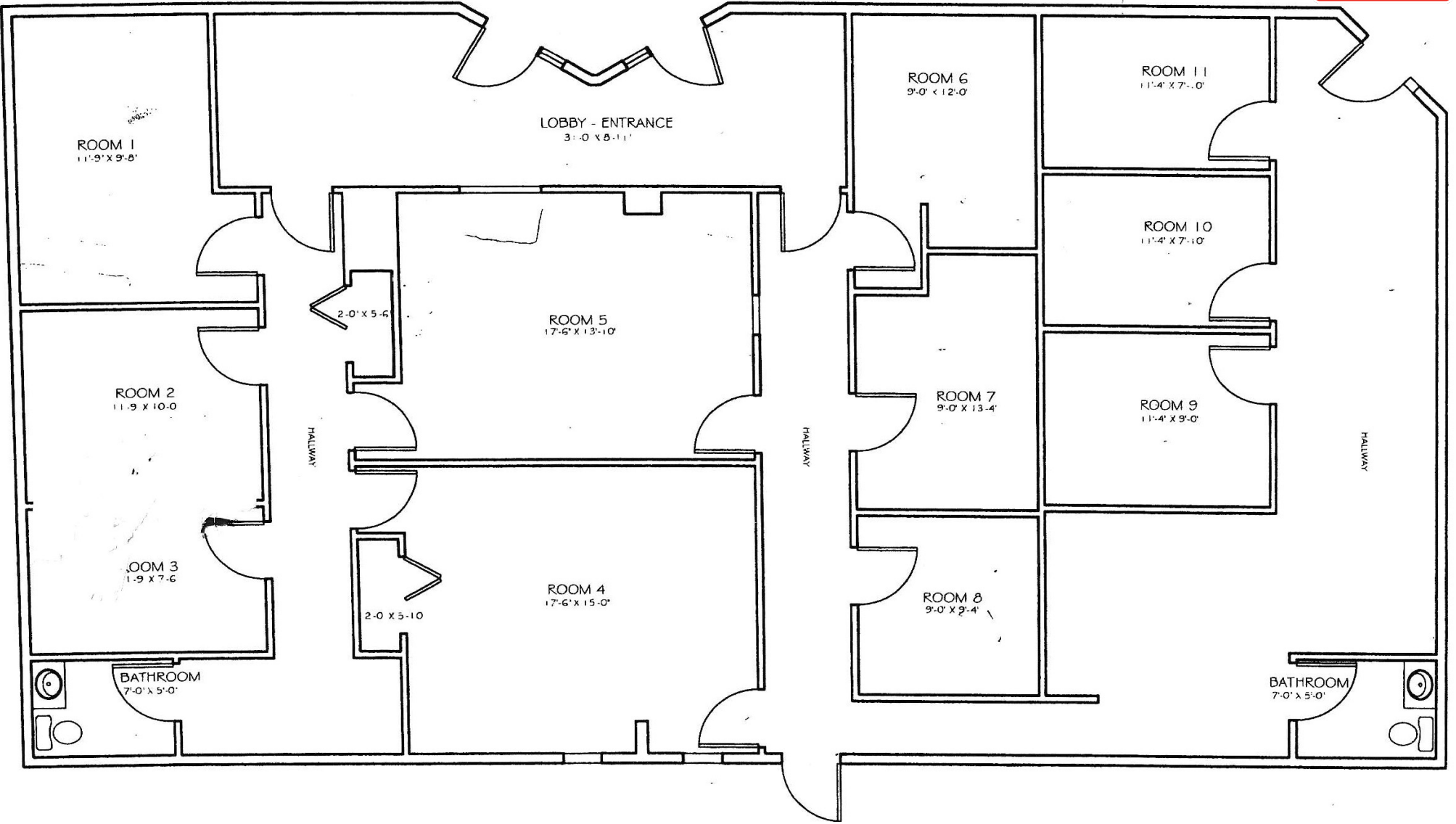




FOR LEASE

2,687 – 17,000 SF Retail and Office Space

Colliers



FLOORPLAN - SUITE 5

2,687 - 17,000 SF Retail and Office Space



AERIAL MAP

2,687 – 17,000 SF Retail and Office Space



MERCHANT MAP

2,687 – 17,000 SF Retail and Office Space

DEMOGRAPHICS

15 Mile Radius



Household & Population Characteristics



\$250,275
Median Home Value



83%
Owner Occupied Housing Units



41.9
Median Age

Household & Population



2.5
Average Household Size



76,587
Current Total Population



30,457
Current Total Households

Income & Households Summary



\$84,528
Median Household Income

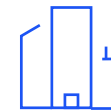


\$109,585
Average Household Income



\$43,476
Per Capita Income

Business



1,981
Total Businesses



17,522
Total Employees

Data Notes:

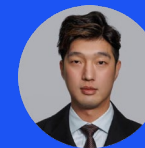
- Household population includes persons not residing in group quarters. Average Household Size is the household population divided by total households. Persons in families include the householder and persons related to the householder by birth, marriage, or adoption.
- Income represents the preceding year, expressed in current dollars. Household income includes wage and salary earnings, interest dividends, net rents, pensions, SSI and welfare payments, child support, and alimony.
- Per Capita Income represents the income received by all persons aged 15 years and over divided by the total population.



Shawn H. O'Brien, CCIM
Senior Vice President
517 303 5554
shawn.obrien@colliers.com



Amy Richter-Perkins
Associate Vice President
517 614 1314
amy.richter-perkins@colliers.com



Burm Kim
Associate Investment Advisor
517 349 3732
burm.kim@colliers.com

We have no reason to doubt the accuracy of information contained herein, but we cannot guarantee it. All information should be verified prior to purchase and/or lease.