

FOR LEASE > RETAIL SPACE

4601 East Bannister Road

KANSAS CITY, MISSOURI



Property Features

- > 5,500 SF available for lease
- > Over 171 surface parking spaces
- > Monument signage available
- > Newly renovated building
- > Join Cabinets To Go and Home Depot
- > Located near Cerner's new campus with 16,000 employees
- > Zoned CP2

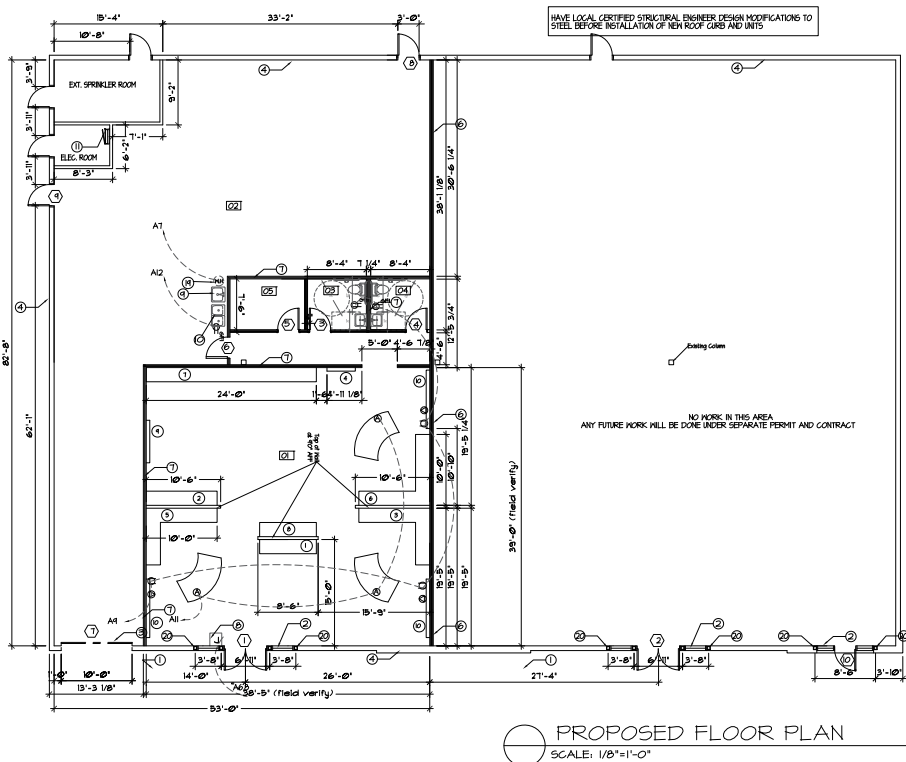
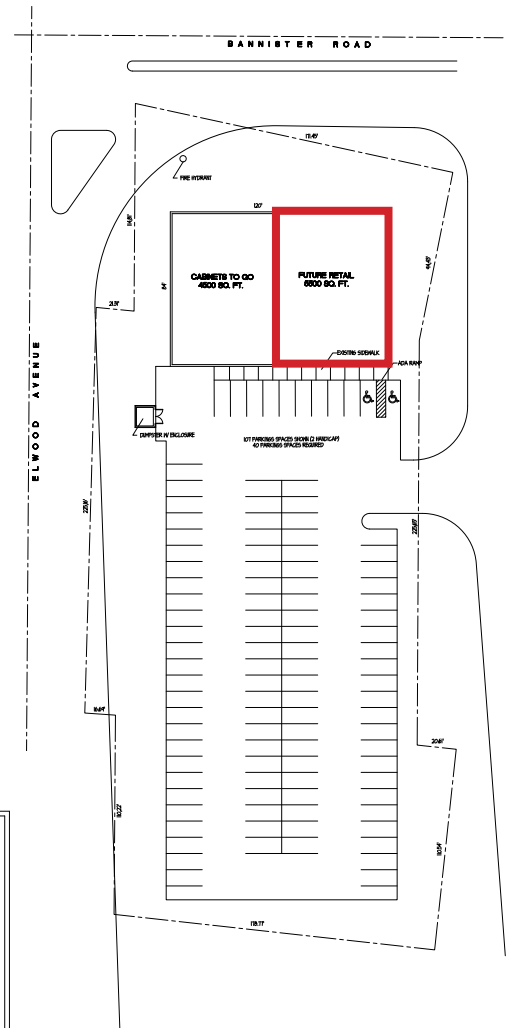


2016 Demographics	1-Mile	3-Mile	5-Mile
Total Population	4,012	53,705	159,651
Average Household Income	\$37,565	\$47,678	\$63,832
Average Household Median	\$30,568	\$38,133	\$45,353
Daytime Population	4,663	49,068	169,920

KIMBERLY TRANBARGER
+1 816 556 1183
KANSAS CITY, MO
kimberly.tranbarger@colliers.com

COLLIERS INTERNATIONAL
4520 Main Street, Suite 1000
Kansas City, MO 64111
www.colliers.com

4601 East Bannister Road



KIMBERLY TRANBARGER
+1 816 556 1183
KANSAS CITY, MO
kimberly.tranbarger@colliers.com

COLLIERS INTERNATIONAL
4520 Main Street, Suite 1000
Kansas City, MO 64111
www.colliers.com

This document has been prepared by Colliers International for advertising and general information only. Colliers International makes no guarantees, representations or warranties of any kind, expressed or implied, regarding the information including, but not limited to, warranties of content, accuracy and reliability. Any interested party should undertake their own inquiries as to the accuracy of the information. Colliers International excludes unequivocally all inferred or implied terms, conditions and warranties arising out of this document and excludes all liability for loss and damages arising there from. This publication is the copyrighted property of Colliers International and/or its licensor(s). ©2017. All rights reserved.

